

... THE ...

Hamilton Bridge Works

(LIMITED.)

Cable Address: "HENDRIE"

HAMILTON, - - - CANADA,

Constructors of

Railway and Highway Bridges

of Every Size and Design, and all kinds of

Structural Work in steel and iron.

Observation and Water Towers.

Tanks, Caissons, Piers, Turntables,

Boilers, Buoys, Roofs, Girders

and Columns for Buildings, Inclines.



Every Facility for the Construction and Launching of Steel and Iron Ships.



... REFERENCES ...

Grand Trunk Railway Co.

Canadian Pacific Railway Co.

Dominion and Ontario Governments,

and nearly all Municipalities and Contractors in the Dominion.

Dominion Bridge Co.

LIMITED

MONTREAL and LACHINE LOCKS, P.Q.



Steel Bridges for Railways and Highways

Steel Piers and Trestles

Steel Water Towers and Tanks

Steel Roofs, Girders, Beams

Columns for Buildings



A large stock of

**ROLLED STEEL BEAMS, JOISTS, GIRDERS
CHANNELS ANGLES, TIES, Z BARS,
AND PLATES**

Always on hand

IN LENGTHS TO THIRTY-FIVE FEET.



Tables, giving sizes and strength of Rolled Steel Beams, on application.
Post Office Address, Montreal.

J. H. McGREGOR

AGENT

Canada Life Building,

Toronto, Ont

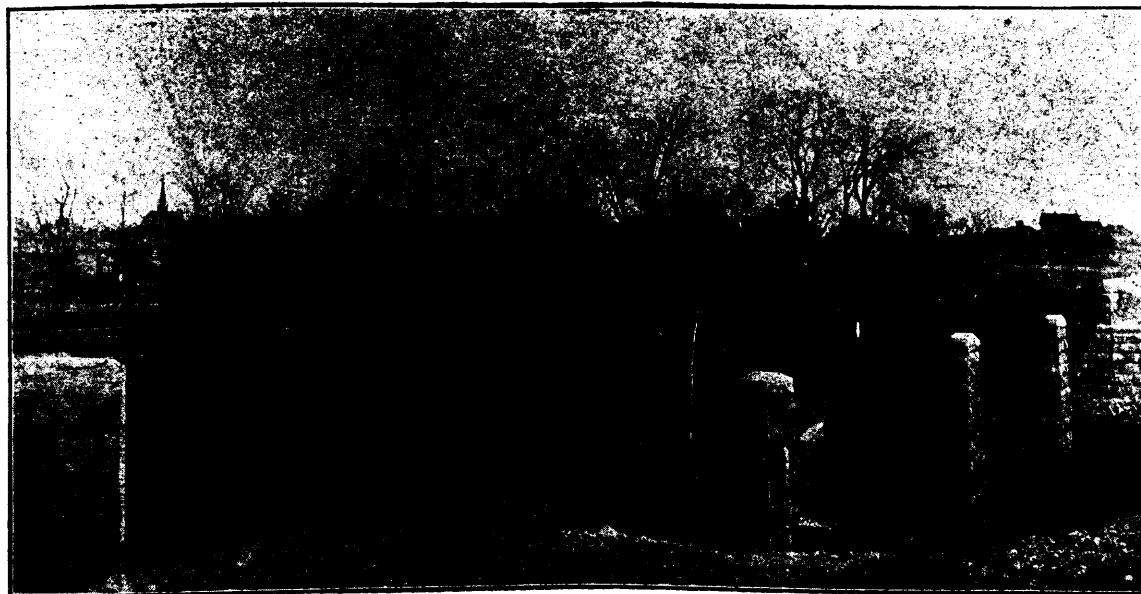
THE CENTRAL BRIDGE AND ENGINEERING COMPANY, Ltd.,

Capital Stock

PETERBOROUGH, ONT.

\$200,000.00.

Capacity 5,000 Tons
Per Annum.



Capacity 5,000 Tons
Per Annum.

MANUFACTURERS OF Bridges, Roofs, Viaducts, Piers, Girders, Turntables, Architectural Work, Forgings, and all kinds of General Engineering Work; also Law's Patent Surface Cattle Guards and Law's Patent "Optimates" Power Hammers.

W. H. LAW, - - Engineer and Man. Director.