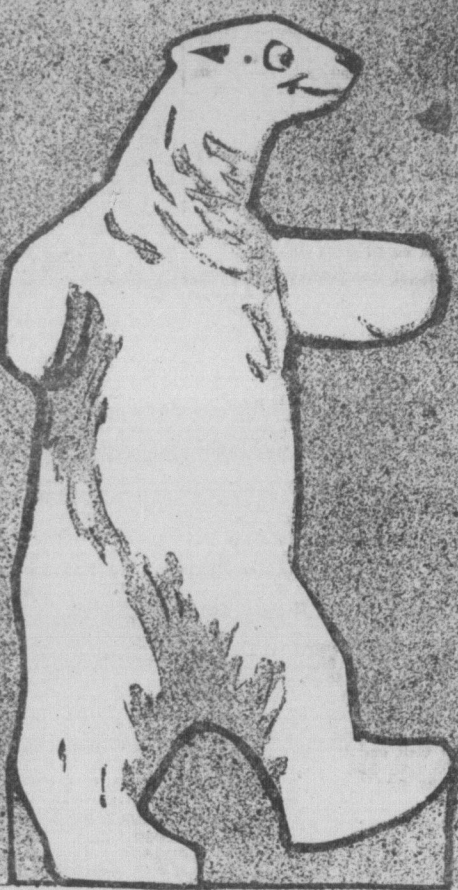


OUR BOYS

AND GIRLS

The Christmas Division of the Cardboard Menagerie



THESE animals are all to be made of cardboard of any color that you choose, white being the best for most of the animals. The pictures of the animals shown here are to be used as patterns. Lay the pattern animal on the cardboard and then cut out carefully with penknife or scissors. The paper patterns may be pasted on if you prefer, but it is

better just to have the animals in the cardboard. You can make the eyes and other features of the animals of paint or crayon, but the plain outline animals are very nice without any coloring. To make the animals stand up paste a strip of wood about half an inch square to the lower edge of each animal at the back. This will make it stand up perfectly. Very large animals made in this way are most attractive, and if you wish

to make them larger you will not find it difficult to do so by drawing the same sort of a paper pattern the size that you want before you start to cut out the cardboard. If any boy or girl wishes to make an attractive Christmas gift for a younger brother or sister or a friend these animals will be just the thing for the purpose. Be sure that the cardboard is not too thick, as it is very difficult to cut

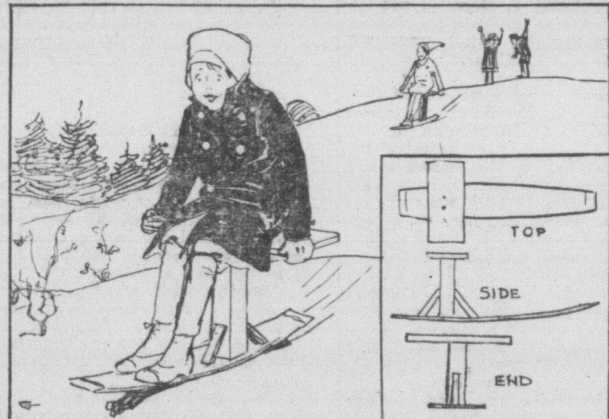
You will be surprised to see how interesting a menagerie you can make with these animals with very little trouble. Santa Claus and the animals if cut from cardboard and covered with gold, silver or scarlet paper, or even if made simply of the white cardboard, will do very well to put on the Christmas tree. If they are to be used for this purpose it is not necessary, of course, to put the little block of wood on the base of the animals. Instead you should paste a loop of tape to the back suspending loop is to be made between the two sheets of paper after you have

laid from the branches so that the cord will show. You may even, as an effective Christmas tree decoration, cut the Santa Claus and the animals from colored paper, stiffening them only with a lining of stiff paper to which you paste the bright crepe on the Christmas tree. When making the animals in this way from two thicknesses of paper it is a good plan to lay the two ends of ribbon or cord with which the you should paste a loop of tape to the back suspending loop is to be made between the two sheets of paper after you have

pressed them together. When the animals are dry you will then have the Christmas tree ornaments all complete and ready to go on. The polar bear if intended for Christmas tree decoration will look particularly festive made of white with a few glitterers sprinkled over him, here and there, because that is the way he is accustomed to look in his native haunts. Then when you hang him on the tree if you are sure to place him in the vicinity of smart ficial snowfall and an icicle or two, such as are made for Christmas tree enhancement, you may be sure he will be perfectly happy.

HOW TO MAKE A SKI JACK

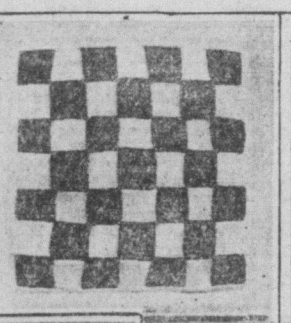
WHEN the first hint of snow in the air starts the juvenile population scouring for their sled runners, let us not forget to add the humble ski jack to the winter outfit. Considering its cheapness and simplicity of construction, this little coarser is hard to beat. With a few simple tools any bright boy can knock one together within a half hour's time, and have the rest of the day to enjoy a sport quite as exhilarating as that of skiing and without the element of danger.



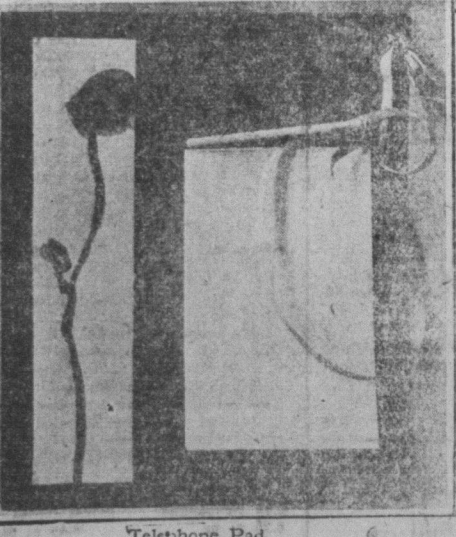
It is fun for a number of boys in one neighborhood to start to make these sleds at one time, so that each can help the other over the hard places, and contests in which all can take part can be planned for Saturday. When boys use different sleds or coasters their skill in managing them is not always to be determined, because some of the boys have much better coasters or sleds than the others or because they have been able to spend more money for their equipment, but when boys have all home made sleds like this one no one has any advantage over the others unless it be that he has worked harder to make his coarser better or is really more skillful in managing his strange vehicle.

Answer to Towns and Cities Puzzle.
Last week's puzzle towns and cities were Troy (N. Y.), Ayer (Mass.), Cleveland (Ohio), Lansing (Mich.), Buffalo (N. Y.), Bath (Me.), Concord (Mass.) and Phoenix (Ariz.).

ATTRACTIVE CHRISTMAS GIFTS EASILY MADE



together so that they will make a good thick pad, which will keep the telephone from burning, and let the hole of the pad be around the edge with heavy silk. For the men of one's family it is nice to make telephone pads, which are most useful little gifts. All that is necessary is a pretty colored dull cardboard. This should be about six inches wide and about seven inches long. Buy a tiny paper pad such as you may get at any shop for a penny and paste this to the card. Pierce a hole in the top of the card and the fast a tiny pencil, which should have a ring attached to the top. These can also be made for a pen or two. Use a ribbon to tie the pen or fast. Decorate the card with any sort of a simple drawing at the side of the pad.



Woven Teapot Holder



ONLY eight days to Christmas—that very pretty. About five inches square doesn't mean much time for making a large enough for the holder. You will Christmas presents, with all that one need two of these squares, which may be has to do in the way of study, outdoor of dark red felt or dark blue or dark play and so forth. But one shouldn't be discouraged, because there is still time to make something for every member of the family that will be attractive and useful. Weaving ribbons, strips of felt and strips half an inch wide. Cut the light board is a simple and easy way of making colored felt the same length as the square a cover for a sachet, a rug for a doll's house or a teapot holder that any girl's mother would be glad to get. The teapot holder should be made of colors come next to each other in little narrow strips of felt. Two colors of the blocks. After the mats have all been felt are used, and this makes the holder solidly woven in this way out the two.

A JOURNEY IN PAINT BOX LAND

John and Susie Come to the Christmas Tree Forest



PUZZLING TOWNS AND CITIES



GUESS the town that Iberian vintage yield.
The one that's a cavern of joy,
The town that can never be deemed woman's ne.
The town that should please every boy.

The town that's a turf for an old-fashioned sport,
The city a vine often needs,
The town that's a place where the rabbits resort,
The city that smiles on good deeds.