

Rainbow Tea!

Received To-day a Fresh Shipment of

Rainbow Tea.

"It has Strength and Flavor."

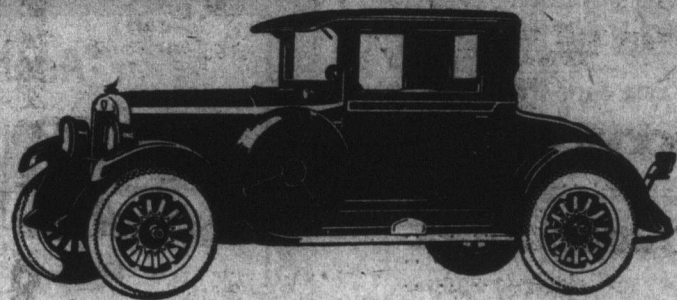
— ALSO —

**Primrose Tea
Victor Tea
Beaver Tea**

Give Them a Trial

GEO. NEAL

Beck's Cove Phone 264 Limited. Water St. East. Phone 17



Developing the Fullest Possibilities of the Four

If you will follow the new good Maxwell step by step through the great plants where it is built, you will quickly understand its extraordinary quality.

The new good Maxwell is manufactured almost to the smallest detail in Maxwell's own factories by an organization that has all the resources in mechanical equipment, scientific precision instruments, and trained man power to create superior qualities in any product it sponsors.

The new good Maxwell starts from the engineering department with a definite advantage—a design that is the result of a determined effort to develop as never before

all the fullest possibilities of the four.

It is a design that is so far in advance of other fours that only in the new good Maxwell can you get a combination of 88 miles an hour, 5 to 25 miles in 8 seconds, gasoline economy of 35 miles to the gallon and riding qualities finer than any other four ever possessed.

Only with such superiority of design, and only with complete Maxwell manufacturing, can so much better four-cylinder motoring be sold at the new good Maxwell price. We are eager to demonstrate these values to you, so that you, too, will be numbered among the ever-growing army of contented Maxwell owners.



Marshall's Garage

WATER STREET WEST

Showroom: Prescott and Duckworth Streets.

The Good MAXWELL

THE LIVERPOOL & LONDON & GLOBE INSURANCE COMPANY, LTD.

For generations this great Company has furnished to the insuring public the best security, the best contract, and the best treatment obtainable in the Insurance World, and continues the same policy that has characterized it for 85 years, stronger and more progressive than ever.

THAT IS WHY WE LEAD.

BOWRING BROTHERS, LIMITED.

AGENTS FOR NEWFOUNDLAND.

Jan 8, 5m, eod

Wall Papers

Well Worth Seeing

AT Templeton's

321 Water Street

mar 18, 3m, eod

Schrafft's Chocolates

like roses

serve

as willing envoys

to convey

whatever words oft times

fail to express.

J. J. Rossiter

Duckworth Street.

St. John's.

Telephones 549-2094.



Some men are content with being covered, no matter how cheap the appearance. Others are particular as to their dress, and maintain the highest standards in material, cut and finish. From the selection of your material to the finished garment it has our careful supervision. Carefully planned by cutters of experience, fitted and shaped under their charge, followed by expert workers who take a pride in their work, these are the combinations of the garments at MAUNDER'S. New goods continually arriving. Samples, style sheets and self-measuring cards sent to your address.

JOHN MAUNDER,

TAILOR & CLOTHIER,

281-283 Duckworth Street.

NOW IN STOCK:

100 crates GREEN CABBAGE, 50 boxes APPLES, 50 boxes ORANGES, California's—Count 176's, 216's, 50 bags EGYPTIAN ONIONS.

— ALSO —
P. E. L. BLUES and REDS POTATOES.

And to arrive shortly:
EARLY and LATE CABBAGE PLANTS.—Now booking orders.

BURT & LAWRENCE

14 NEW GOWER STREET.

'Blue Nose' Potatoes

Due Monday forenoon, ex S.S. Hilbrook, from Summerside and selling at

LOWEST MARKET PRICES:

Two Carloads, 1000 Sacks P.E.I. POTATOES

90 lbs. each

"BLUE NOSE" POTATOES are positively the Choicest Table Potatoes obtainable.

F. McNamara

'Phone 393. Queen St.

FOR SALE!

The following Articles for Immediate Delivery—

LUBRICATING OIL, in 1 Gal. and 4 Gal. Tins.
COMPRESSION CUP GREASE, in 8 lbs. and 1-lb. and 5-lb. Tins.
1 OVERLAND CAR, in running order (Model 85).
ENGINE ENAMELS (Assorted Colours).
One Thousand 3/4" SPARK PLUGS.
FLASH LIGHT CASES (Assorted Sizes).
BRASS, STEEL and CAST IRON WELDING RODS.
Quantity "UNCLE HENRY" PLUG TOBACCO.
JOHNSON'S FLOOR POLISH.
TWO FIRE PROOF SAFES (1 Second Hand).
Large Quantity "NO LEAK" ROOF CEMENT.
OFFICE FURNITURE, including ROLLER TOP DESKS.
FIVE RENFREW PLATFORM TRUCK SCALES, capable of weighing 2000 lbs.
MOTOR ENGINE ACCESSORIES.

FRANKLIN'S AGENCIES, Ltd.

R. W. RITCEY, Liquidator.

may 12, 2m, eod

Best American Screened LUMP COAL.

\$12.00 per Ton. \$3.30 per Quarter.
Sent Home.

CASHIN & CO. Ltd.

'Phone 1046.

Bishop's Cove.

eod, tt

NEW ARRIVALS

POUND SHEETING, PERCALES, SHIRTING, WHITE and STRIPED FLETTE, ASSORTED COLOR CREPE, CRETONNE, QUILT COTTON, TABLE OIL CLOTH, FLEECE LINED UNDERWEAR, BRACES, HOSIERY AT LOWEST PRICES.

Avalon Wholesale Dry Goods Company, Limited.

303 WATER STREET.

apr 7, 2m, eod

Morey's Coal is Good Coal.

dec 30, eod, tt

Nfld. Government Railway.

PUBLIC NOTICE.

For Railway Information, ring 1450, between the hours of 9 a.m. and 1 p.m., and 2.30 p.m. to 5 p.m. Consult your telephone directory, Page 96, for further information.

SAILING NOTICE—S.S. PORTIA.

S.S. PORTIA will leave Bowring's Coastal Wharf, 10 a.m. Tuesday, June 9th, calling at St. Mary's, St. Joseph's, Argentia, and regular ports en route to Port aux Basques. Passengers leaving St. John's on 8.45 a.m. train, Wednesday, June 10th, will connect at Argentia for ports West.

SPEND THE WEEK-END WITH YOUR OUTPORT FRIENDS!

Ask for special ticket, good going Saturday and returning Monday.

YOU PAY ONLY

One Way First Class Fare for the round trip.

Farquhar Steamship Company

BOSTON, MASS.—HALIFAX, N. S.—ST. JOHN'S, Nfld. SERVICE.

S.S. SABLE I. (Passengers and Freight).

Leaves Halifax May 30th June 13th for
Leaves Boston June 2nd June 16th for
Leaves St. John's June 5th June 19th for
Leaves St. John's June 9th June 23rd for N. Sydney &
(Subject to change without notice).

Fare \$30.00 between Halifax and St. John's; \$51.50 between Boston and St. John's, including meals and accommodations. Also sailings Halifax to South and West Coast Newfoundland ports. Apply: HARVEY & CO., LTD., St. John's, Newfoundland. FARQUHAR STEAMSHIP COMPANIES—Head Office, Halifax.



TORONTO TO—DETROIT CHICAGO.

TRAVEL BY NATIONAL LINES "INTERNATIONAL LIMITED."

Leaves Bonaventure Station, Montreal, at 10.00 a.m. Daily. Direct connection from Halifax or North Sydney by "OCEAN LIMITED."

For Fares, Reservations, etc., apply to

R. H. WEBSTER, General Agent.

may 1, eod, tt

FURNESS LINE SAILINGS

FROM LIVERPOOL TO LIVERPOOL

S.S. "Newfoundland" June 16th July 1st
S.S. "Saschem" June 30th July 15th
S.S. "Dixie" July 14th Aug. 1st
S.S. "Newfoundland" July 28th Aug. 14th
S.S. "Saschem" Aug. 11th Sept. 1st
S.S. "Dixie" Aug. 25th Sept. 10th
S.S. "Newfoundland" Sept. 8th Oct. 1st

The New Oil Burning Steamer "NEWFOUNDLAND" carries Cabin, Third Class Passengers.

FURNESS WITBY & COMPANY LIMITED
'PHONE: 130. WATER STREET EAST.

June 6, w, s, tt

Music for the Summer IN COTTAGE and CAMP.

Gramophones

\$15.00 \$20.00 \$25.00

TO ARRIVE

The Portable Pixie THE WEMBLEY WONDER—\$22.50 UKULELES \$10.00

Swanee Whistles

65c. 70c. \$2.25 \$5.00

MOUTH ORGANS and ACCORDEONS AT ALL PRICES.

Charles Hutton.

s, w, tt

WALLSEND COAL.

We are now landing CHOPPED RAILS, FENCE POSTS, BIRCH JUNKS, SCANTLING, WHARF SHORES.

W. H. HYNES.

aug 23, 1y, eod