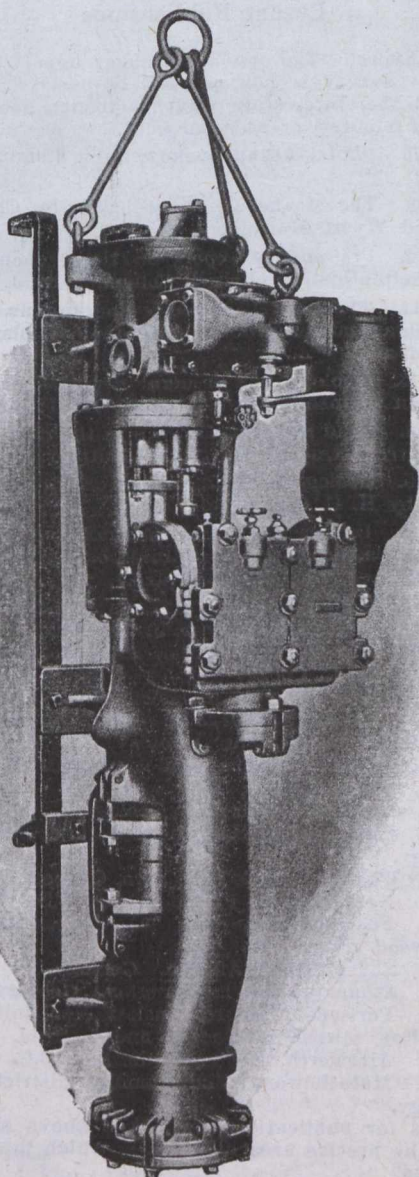


For Shaft Sinking

and handling dirty, gritty water without faltering—
without continual breakdowns—and without repairs
you need a

CAMERON SHAFT SINKING PUMP



It has a more successful record than any other shaft-sinking pump that was ever put on the market. It's strong. It's reliable. It's capable of handling all kinds of water. It's expected to get hard usage, and it's built to stand it.

It has all of the good features of the Simplex horizontal type Cameron Pumps and every constructive advantage that fifty years of pump building experience could put into it.

There are no exposed moving parts to be bent or broken. It takes up less room in the shaft than any other pump made and cannot be damaged by striking the side walls, nor is it liable to injury by blasts.

The Steam Valve Movement works without arms or levers. The Steam Mechanism consists of four strong, simple pieces only and there is no outside valve gear. For this reason you can run your Cameron faster than any other pump.

*The best Cameron advertisements
are not written — they pump.*

You ought to have bulletin 7204 on file.
Write for it now.

Canadian Ingersoll-Rand Company Limited

Sydney

Sherbrooke
Winnipeg

Montreal
Nelson

Toronto
Vancouver

Cobalt