

## BAGPIPES

We're the largest  
Bagpipe dealers in  
North America.

Lawrie's famous  
make is the kind  
we sell. Write  
to-day for

**FREE  
CATALOG**

We're from the  
Old Country our-  
selves and know  
all about the Pipes.

Chanters, Bags,  
Reeds, etc., in big  
stock. Repairs  
promptly done.

Write for Catalog  
to-day.

**ORME**

OTTAWA ONT

## SEED

Timothy, Fancy A	per bus.	\$ 3.65
Timothy, Extra Choice B	"	3.25
Red Clover, Fancy A	"	11.00
Red Clover, Extra Choice B	"	10.75
Alfalfa, Fancy	"	10.00
Brome Grass	per cwt.	10.00
Red Top	"	14.00
Rye Grass	"	8.00
Buckwheat	"	5.00

Prices for seed oats, barley, flax on application.

### POTATOES

Early Ohio	per bus.	\$0.75
Early Rose	"	.75
Early Bovies	"	.75
Early Puritans	"	.75

Bags for seed 25c. each extra.  
Bags for potatoes 10c. each extra.  
Now is time to order seed as prices are reason-  
able and from our reports there is room for an  
advance. These prices are cash with order.  
We solicit correspondence.

**LAING BROS.,**

234-8-8 King St., Winnipeg

Phones: 5890, 5891, 4476.  
Night Phone: Fort Rouge, 528

## The Brandon Tannery

Successors to  
**CARRUTHERS & CO.,**  
Custom Tanners



Send for our new illustrated, de-  
scriptive catalogue of tanning  
charges, Galloway and sheep-line  
coats, robes, gauntlets, etc.

**TANNERY, BRANDON**

## TREES & SHRUBS



I am the only nur-  
seryman in Canada who  
offers for sale the first  
proof Hybrid Apple  
trees, which were in-  
troduced at the Experi-  
mental Farm, Ottawa,  
and tested at Brandon  
and Indian Head.

Write for list and  
full particulars to  
E.D. Smith, Winona, Ont.

**E.D. SMITH, WINONA**

vertised and they shall accept the low-  
est tender put in by the contractor who  
in the judgment of the commissioners  
is possessed of sufficient skill, experi-  
ence and means to carry on the work  
or such portion thereof as he has ten-  
dered for.

(4) Any contract to be so entered  
into shall be guarded by such securi-  
ties and contain such provisions for re-  
taining a portion of the contract  
moneys, to be held as a reserve fund  
for such periods of time, and on such  
conditions as appear to be necessary  
for the protection of the province and  
for securing the due performance of  
such contract.

(5) No money shall be paid to any  
contractor until such person as the  
commissioners shall designate in the  
contract for the purpose has certified  
that the work for or on account of  
which it is claimed, has been duly exe-  
cuted, and that such money is due  
and payable, nor until such certificate  
has been approved by the commission-  
ers.

(6) Every such contract shall be in  
writing, and shall specify the work to  
be done, the materials to be furnish-  
ed, and the price to be paid for the  
same, and the time within which the  
work is to be completed, and the pen-  
alties to be suffered in case of non-per-  
formance thereof; and every such con-  
tract may specify the person to whose  
satisfaction the work is to be completed  
and the mode of determining any dis-  
pute which may arise concerning or  
in consequence of such contract. No-  
thing, in this section, however, shall  
prevent the commissioners from exe-  
cuting any work under their own man-  
agement where they are satisfied that  
the same can be done at a cost less  
than the lowest tender therefor.

21 (1) No member of the legislative  
assembly, or director of said Grain  
Growers' Association shall hold or be  
appointed to any office of emolument  
under the commissioners; or shall be a  
party to or concerned or interested in  
any contract or agreement with the  
commissioners for any purpose what-  
soever whereby he may receive any  
payment of money, advantage or profit  
from the commissioners.

(2) Any member of the legislative  
assembly who accepts any such office  
or is a party to, or concerned or inter-  
ested in such agreement or contract as  
aforesaid, shall incur the disqualifica-  
tions and be subject to the penalties  
prescribed by sections 12, 13 and 14 of  
the Legislative Assembly Act.

22 All property and all rights there-  
in or thereto belonging acquired by  
the commissioners for the purpose of  
this act shall be held by them for the  
crown.

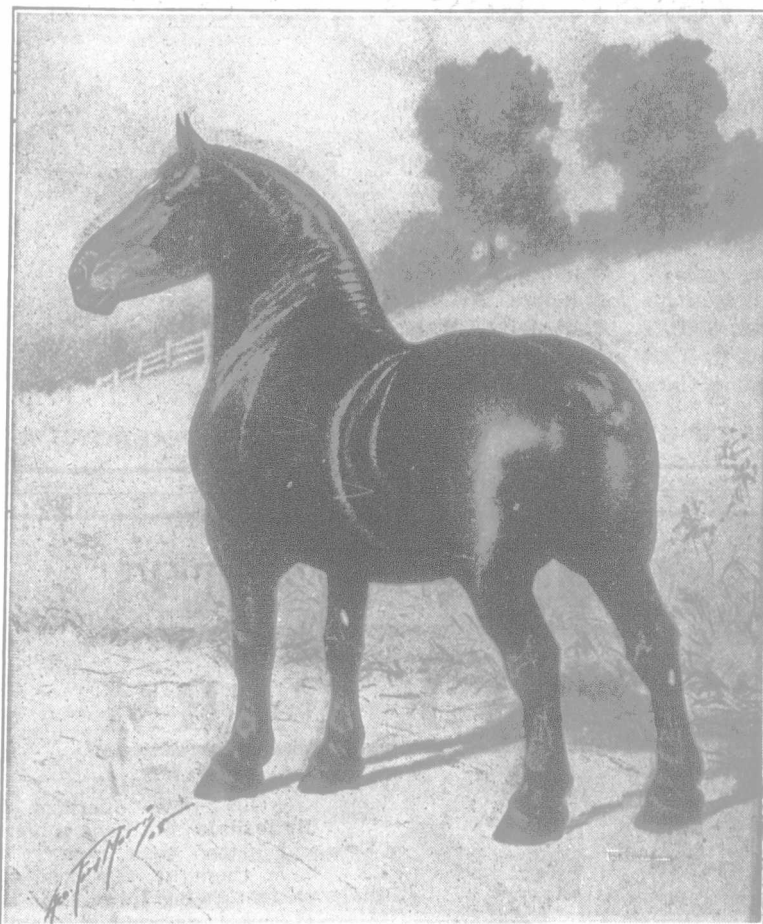
### STORAGE CHARGES.

23. The commissioners shall, by by-  
laws, frame a scale of tolls, rates or  
charges with power to amend or re-  
vise the same, from time to time, for  
the storage or warehouse of grain and  
other merchandise in elevators  
operated by the commissioners, and  
said tolls, rates, or charges shall be as  
low and reasonable as possible con-  
sistent with making due provision for  
defraying and meeting the expendi-  
tures and requirements specified in  
section 16 of this act.

24. The commissioners shall not af-  
ford or give any preference or ad-  
vantage in tolls, rates or charges, or in  
any respect whatsoever to any per-  
son, company, firm or corporation, nor  
shall they subject any person, com-  
pany, firm or corporation to any detri-  
ment or disadvantage in tolls, rates  
or charges in any respect whatsoever.

25. The commissioners shall afford  
all reasonable, proper and equal facili-  
ties for the storage of grain in eleva-  
tors operated by them, and for the re-  
ceiving, forwarding and delivery of  
grain stored in such elevators.

26. The commissioners may store in  
elevators operated by them all grain  
offered for that purpose and may de-  
mand and receive such tolls, rates or  
charges for the same as they shall fix  
by said scale. All such tolls, rates or  
charges shall at all times be charged  
equally to all persons, and after the  
same rate in respect of such grain, and  
no reduction or advance in any such  
tolls, rates or charges shall be made  
either directly or indirectly, in favor  
of or against any person, company, firm  
or corporation using said elevators.



Frequent importations of the rugged sound kind of Percheron  
stallions and mares make Rosedale Farm one of the places you should  
visit before buying. R. W. Bradshaw personally selected the present  
shipment.

**R. W. BRADSHAW**

ROSEDALE FARM

MACRATH, ALTA.

## Craigie Mains Clydesdales



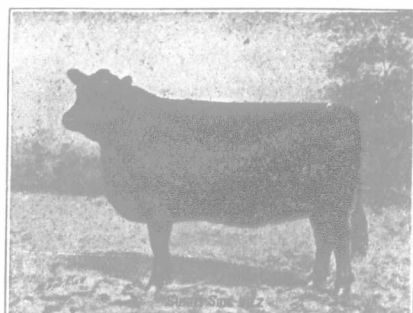
We have in our new barns  
situated in Lumsden, Sask., about  
70 head of imported and Cana-  
dian-bred Clydesdales. Our last  
importation of over 50 head is the  
largest importation made to  
Canada in 1909 and is without a  
doubt the best selection we have  
yet handled; they are all the  
Scotch type and are sired by such  
horses as Baron's Pride, Baron  
Cedric, Everlasting, Sir Everard,  
Baron O'Buchlyvie, Royal Fav-  
orite, Royal Edward, Rev. Janta,  
Scottish Crest, Marcellus, Lobori.  
Customers buying from us have  
no middlemen's profits to pay, as  
we buy and sell our own horses.  
Write for descriptive catalogue.

**A. & G. MUTCH**

LUMSDEN,

SASKATCHEWAN

## GLENCARNOCK ABERDEEN ANGUS CATTLE



We have a choice lot of well grown  
young bulls of 1909, of the low down  
blocky type sired by Imported Prince of  
Benton, who was one of the best Angus  
bulls ever imported to America. We have  
also a choice lot of two year old heifers  
by the same sire out of big heavy fleshed,  
choicely bred cows of the easy keeping  
sort. Now is the time to get a bull that  
will sire the low down heavy fleshed steers  
that bring the top price.

**GLENCARNOCK STOCK FARM, BRANDON, MAN.**

ROBT. BROWN  
Herdsmen

JAS. D. MCGREGOR  
Prop.