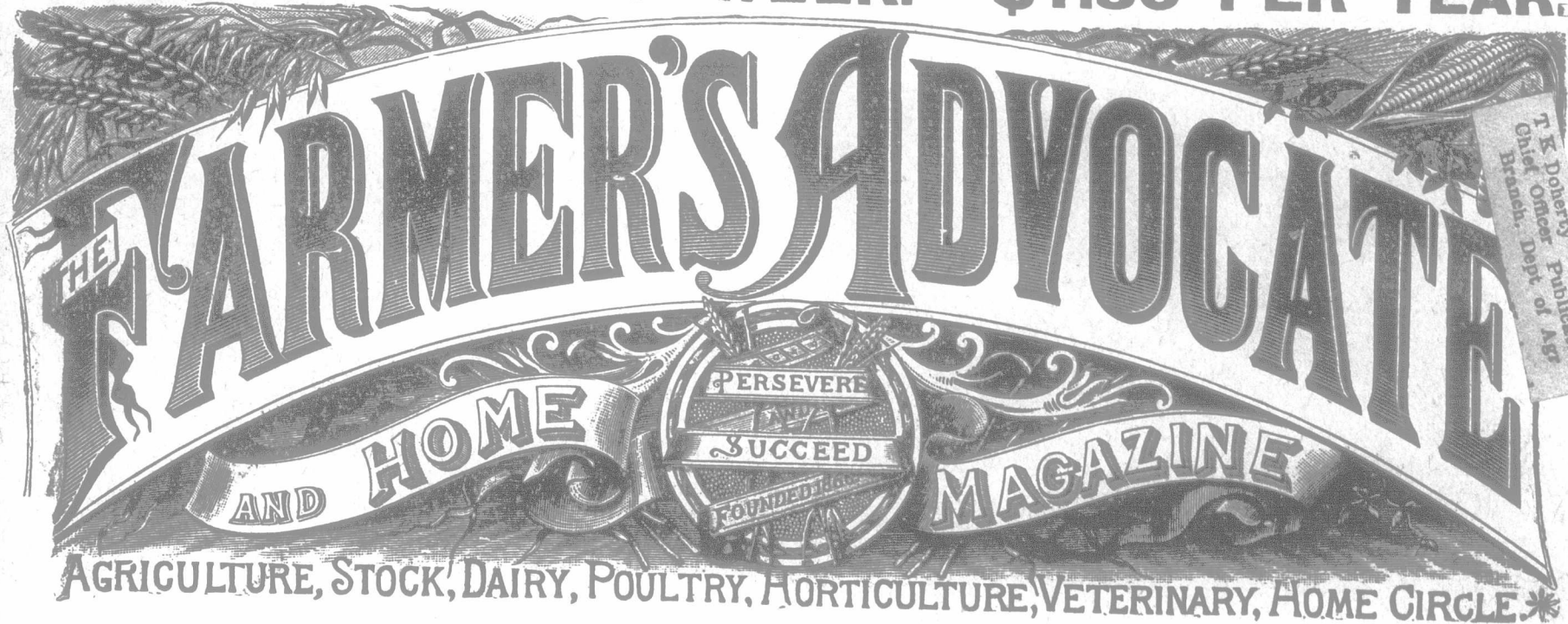


1831
P. 1831
PUBLISHED EVERY WEEK. \$1.50 PER YEAR.

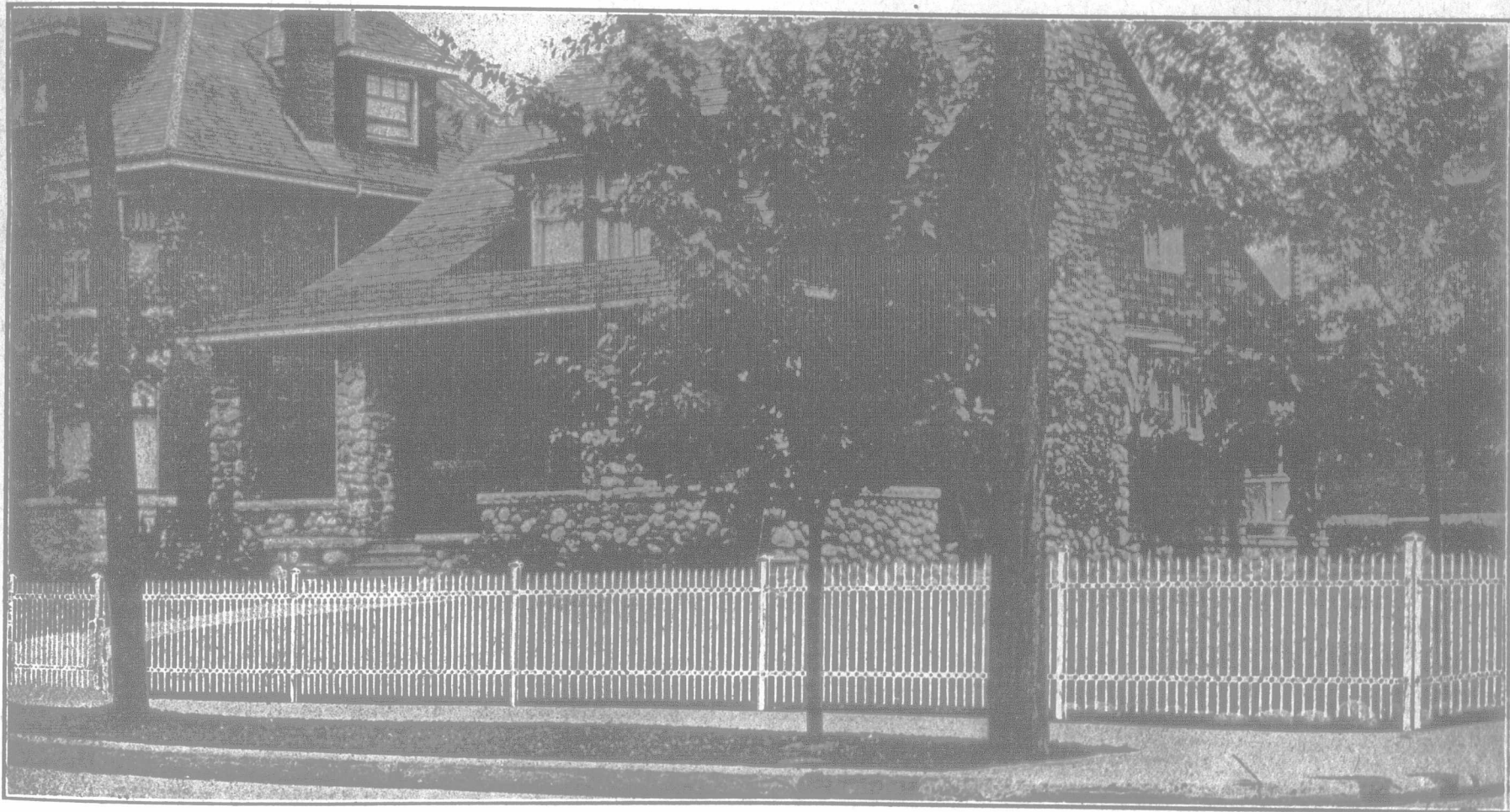


VOL. XLVIII.

LONDON, ONTARIO, JULY 31, 1913

No. 1088

Frost Angle Steel Fence



Will Make YOUR Home Look Just As Nice

The fence shown above is constructed from angle steel throughout, which gives it the strength as well as the appearance of a massive iron fence. It is particularly adapted for farm lawns, as there is no other exterior improvement that lends the same amount of neatness as a good metal fence.

Gates to match, drive gates made in two sections. Standard heights of fence, 3, 3½ and 4 ft.

FROST ANGLE STEEL FENCE

guarantees many years of service, because with posts set in concrete and being a steel fence throughout, it is practically indestructible.

Let us have a rough sketch of your lawn, showing position fence will occupy and location of gates, and we will give you exact cost for the fence completely erected by our nearest dealer.

A word direct to the Head Office will get our prompt attention.

FROST WIRE FENCE COMPANY, LIMITED
HAMILTON, ONTARIO