

Shipping News

JAPAN IS PROSPEROUS.

The U. S. State department believes Japan is preparing for large development of her commerce in the Pacific, it being concluded that she is devoting to expansion of her merchant marine the great war profits amassed during the past year. Profits on \$500,000,000 of war contracts from Russia to Japanese arsenals, made possible by the \$500,000,000 allied loan here which released London gold, are estimated at \$200,000,000. It is assumed that England will be in Japan's debt when the war ends, and if victorious, will transfer some of the former German colonies in the Pacific to Japan.

BRAZIL IS AROUSED.

Journal do Commercio of Brazil recalls the fact that Germany is still in debt to Brazil for coffee to the value of 120,000,000 francs. The newspaper suggests that measures be taken to prevent German ships, at present in Brazilian ports, escaping, and recommends that negotiations be opened with Germany with view to chartering these vessels in order to relieve Brazilian exportation. More drastic measures, the paper intimates, could be taken should Germany refuse.

THE GENTLE GERMANS!

That Germany, in order to secure control of inter-ocean canal route, has sought to foment a revolution in Nicaragua and return Ex-Dictator Zelaya to power, was revealed in an official blue book published in Managua recently. German charge and consul are even declared to have been involved in a conspiracy to assassinate Pres. Diaz and his Cabinet as part of this programme.

BUSY SHIP YARDS.

H. L. Aldrich, editor of International Marine Engineering, says there are at present 252 ships of more than 1,000 tons, exclusive of warships, under construction in shipyards in this country. Average size is about 5,000 tons. Work contracted for is enough to keep American yards running to capacity for three years, while orders enough could be obtained to keep yards busy for another three years.

SHIPS CHANGE HANDS.

Pacific Mail Steamship Co. has purchased from Dutch West Indian Mail Steamship Co. steamers Venezuela, which had previously been sold to a Norwegian firm, and Ecuador and Colombia, at 5,000 to 5,500 tons. Last August Pacific Mail sold its five largest vessels to an International Mercantile Marine subsidiary.

BIG BRIDGE FOR HAMILTON.

A bridge 1,400 feet long will be erected by the Toronto-Hamilton Highway Commission in order to secure a proper entrance to the City of Hamilton. The highway and the hydro radial will run over this bridge, which will be just 200 feet longer than the viaduct over the Don at Bloor street.

MONEY IN SHIPS.

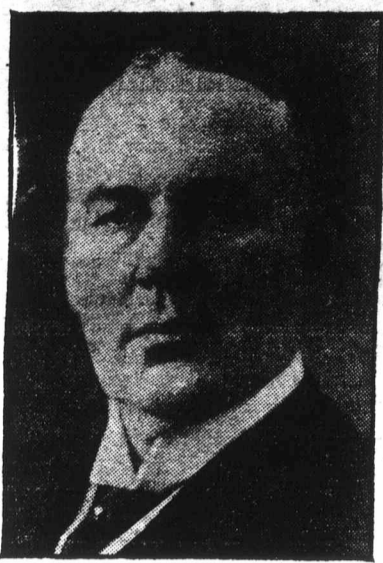
A 10,000-ton steamship, now under construction on the Pacific coast for delivery in June, has been sold to a New York broker for \$1,500,000 at end of last week. This is an advance of \$700,000 over the builder's price of \$850,000.

BUSY SHIPYARDS.

Seattle special says 23 vessels of various types, representing aggregate cost of \$8,258,000 are under construction or have been contracted for by local shipbuilding plants.

'ASH FOR THE ARMY.

A war order for 600,000,000 one pound tins of beef stew was received by the Imperial Canneries Ltd., of Toronto last week. This order will be divided among a number of American and a few Canadian firms, the manufacturers receiving about \$1.75 a dozen delivered in Montreal.



MR. G. M. BOSWORTH,
Head of C. P. R. Steamships. The Empresses on the Pacific Have Commenced Their Regular Runs.

RUSSIA'S NEW PORT.

The Russian port of Nikolaievsk, at the mouth of the Amur river, in Siberia, will be opened for navigation June 14, providing a new channel for the importation of goods from the United States, the American-Russian chamber of commerce in this city was informed by a cable message received recently from Moscow. The opening of the new port is expected greatly to facilitate shipments to Russia because of the traffic congestion at Vladivostok resulting from the unloading there of enormous quantities of war munitions and other government supplies. Goods received at Nikolaievsk will be transported up the Amur river to Stretvinsk where connections will be made with a railroad joining the trans-Siberian line.

PACIFIC EMPRESS RESUMES SAILINGS.

Great significance is attached to the return to the Transpacific run of the Canadian Pacific Ocean Services liner Empress of Russia, which is scheduled to sail from Hong Kong for Victoria and Vancouver. The resumption of this palatial liner in the mercantile trade, with her sister ship the Empress of Asia, which will follow closely in her wake, especially in view of the fact that other big Transpacific steamship lines have suspended operations, means that the bulk of the increasing passenger and tourist traffic between the North American coast and the Far East will be diverted through British Columbia ports.

THE BRITISH EMBARGO.

Great Britain has extended import embargo to cover many more articles, including pottery, cotton and woolen manufacturers, cutlery, certain acids, hardware, wood and woodwork and soap.

NEW VEGETABLE DYE.

Discovery of new vegetable dye for cottons has solved Brazil's dye problem, says returned American. Dye gives fast color and is in unlimited supply.

CANADIAN PACIFIC

TICKET OFFICES:

141-143 St. James Street. Phone Main 8125.
Windsor Hotel, Place Viger and Windsor St. Stations.

Railway News

TAKING CHANCES.

That the man who rode on the Erie regularly between the years of 1863 and 1872 must have been considered a poor risk by accident insurance companies is the conclusion that one would form from reading excerpts from letters written by Goldwin Smith to Charles Eliot Norton. Some of Mr. Smith's letters to Mr. Norton are now being printed in the Cornell Alumni News, and one paragraph from them at least throws an interesting sidelight on what Mr. Smith thought of the Erie in those days. He says:

"I go this evening by the Erie Railroad to Ithaca, and as about one train in every three on the average arrives at its destination safely on that line, and seven out of the last ten have been smashed, there is a fair chance, of my being at Cornell College to-morrow morning."

Needless to say conditions on the Erie are now quite different from what they were when that letter was written.—New York Sun.

RAILROAD EARNINGS.

Company.	Total.	Increase.	P.C.
C. P. R.	\$2,258,000	\$527,000	30.4
G. T. R.	957,542	100,395	11.7
C. N. R.	538,000	126,900	30.9
Totals	\$3,753,542	\$754,295	25.2

LA BAIE DE CHALEUR.

Large Painting of Panoramic Topographic Map, Government Railways' Ticket Office, St. James Street.

La Baie de Chaleur, that beautiful arm of the Gulf of St. Lawrence, famed as a scenic summer playground for its immense forest and fishery wealth, is vividly portrayed in the panoramic topographical painting now on exhibition at the Government Railways Ticket Office, Transportation Building, St. James Street.

From the source of the Matapedia to the mouth of the Miramichi, the Gaspé Coast with range after range of ultramarine mountains in the background far away Anticosti and near at hand Prince Edward Island, this realistic conception conveys a most comprehensive along the North Shore, the Quebec Oriental and Atlantic and Western Railways by the Gaspé shores, with the principal stations, are indicated. Insets of Campbellton, Dalhousie, Meeting of the Waters, Surf bathing, the Miramichi, Perce Rock, and the Monarch of the Forest are so artistically arranged as not to detract from its value as a map, and yet accentuate a few of the manifold attractions of this glorious stretch of country.

While in itself a valuable means of drawing attention to this fair country by the sea, a beautifully illustrated and descriptive folder containing a faithful reproduction of the painting is being distributed.

CANADIAN NORTHERN

QUEBEC

Daily except Sunday 9.30 A. M. Buffet Parlor Cars.

SHAWINIGAN FALLS GRAND MERE

Via the Short Line

9.30 A. M. Daily except Sunday. 4.45 P. M. Daily except Sunday.

L'ÉPIPHANIE JOLIETTE

Via the Short Line

9.30 A. M. Daily. 4.45 P. M. Daily except Sunday.

5.30 P. M. Daily except Sunday.

For tickets, parlor car reservations, etc., apply to City Passenger Agent, 230 St. James St., Tel. Main 6570 or Depot Ticket Agent, St. Catherine St. East Station, Tel. Lasalle 141.