



B. C. Electric Interurban Terminal at Vancouver.

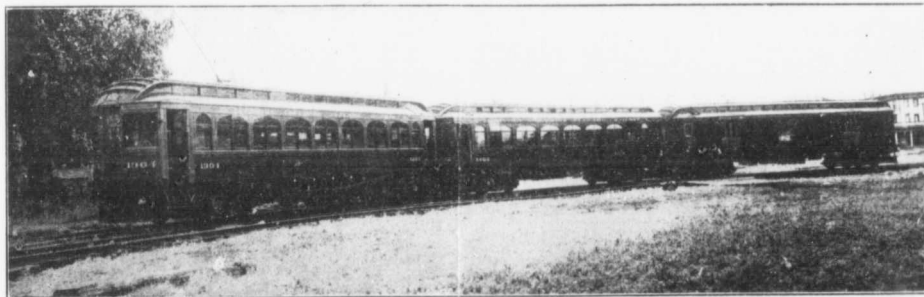
No Visitor to Vancouver has seen the Coast District until he has taken the trip from

VANCOUVER TO CHILLIWACK

76 MILES.

The line passes through the centre of the South Fraser Valley, one of the richest Agricultural Districts in the Province.

THE LONGEST ELECTRIC RAILWAY LINE
IN CANADA.



Three Car Multiple Unit Train Operated on Fraser Valley Division.

FOUR PASSENGER TRAINS DAILY

Leave Carrall Street Station, Vancouver, and Columbia Street Terminal, New Westminster.

(SEE SMALL TIMETABLES FOR SCHEDULE).

Multiple Unit Trains of Three Cars are operated on this run, affording every provision of comfort, convenience and safety for passengers.

The running schedule is so arranged that the Round Trip may be made in one day, with a stopover of six hours at Chilliwack.



B. C. Electric Station at Chilliwack.