

# Dalorama

Well puzzle freaks, this year will mark the return of a weekly puzzle feature to **the Gazette**. Now, we can see all you Dalarama fans rapaciously licking your chops and we would like to assure you the

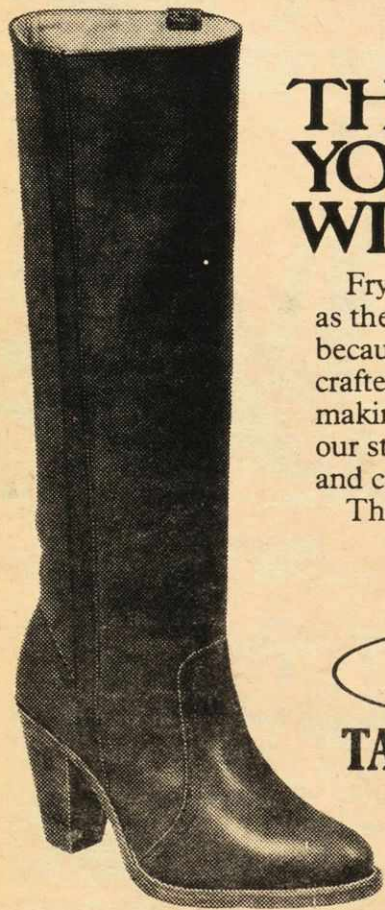
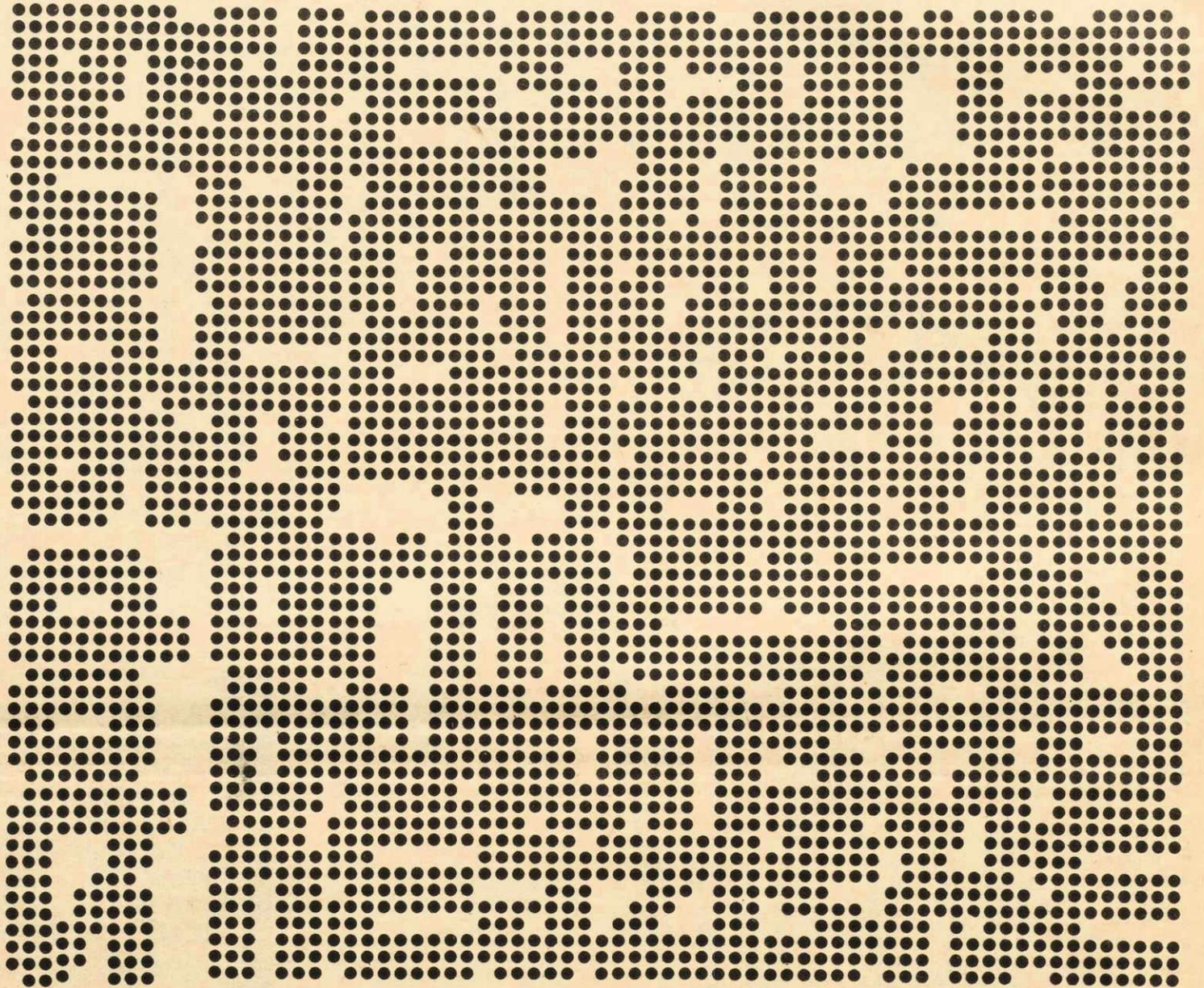
Dalarama will be back this year. However, this year we will be alternating the Dalarama with another puzzle feature that we hope will tintillate your wildest puzzle dreams. This puzzle's a little bit more

of a C challenge, but we have faith in you dear reader, for we know that you will leave no puzzle height unscaled. Please write us and tell us what you think of the new puzzle. Next week, Dalarama. Good Luck!

Three 2-letter words, four 3-letter words, six 4-letter words, three 5-letter words, and one 6-letter word are camouflaged in that braillelike mess to your right. Those words appear horizontally, vertically, right side up, upside down and sideways.

To find the solutions, I suggest you find a partner and have him (or her) rotate this book (or you) at a distance. Then list the words alphabetically in the spaces provided.

1. \_\_\_\_\_
2. \_\_\_\_\_
3. \_\_\_\_\_
4. \_\_\_\_\_
5. \_\_\_\_\_
6. \_\_\_\_\_
7. \_\_\_\_\_
8. \_\_\_\_\_
9. \_\_\_\_\_
10. \_\_\_\_\_
11. \_\_\_\_\_
12. \_\_\_\_\_
13. \_\_\_\_\_
14. \_\_\_\_\_
15. \_\_\_\_\_
16. \_\_\_\_\_
17. \_\_\_\_\_



## THERE'S NOTHING YOU CAN'T WEAR WITH FRYE BOOTS.

Frye boots are just as comfortable with high fashion as they are with a pair of jeans. And it shows. That's because all Frye boots have been carefully bench-crafted of the finest leathers. It's the way we've been making boots for more than 100 years. Even though our styles may change over the years, our quality and craftsmanship remain the same.

The best.



5472 Spring Garden Rd., Hfx  
Ph: 429-4934

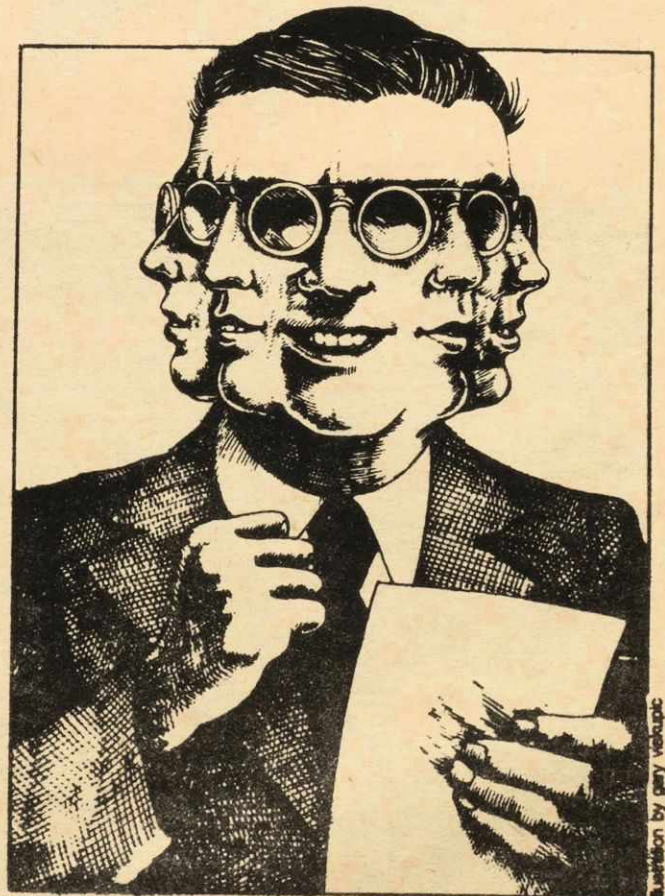


Illustration by Gary Veltrop