

1982 film relevant in 1984

# Film Society to show Atomic Cafe

The rural England of 1964 is the setting of *The Draughtsman's Contract*, written and directed by the avant-garde film-maker Peter Greenway. The central character is a Mr. Neville (Anthony Higgins) draughtsman, whose business it is to travel from one manor house to another, producing for the proprietors a series of topographical drawings of their holdings. The action of this film begins with the request of Mrs. Herbert (Janet Suzman) for a set of twelve drawings of her estate, which she will present to her husband upon his return from the city; the draughtsman at first refuses, but then accepts the job, on the condition that he will enjoy the "use" of his employer's body. Using his portable view-finder, he selects twelve views and orders they be kept clear while he works; however a number of unwanted objects soon begin to appear -- a coat, a pair of boots, a ladder, -- to which he decides to include in his drawings anyway. This does not prevent the audience, led by the film-maker

to compare the draughtsman's pictures with the reality he is depicting, from making the connections which reveal that



Mr. Herbert has actually been murdered, and that all the evidence indicates Mr. Neville as the culprit. *The Draughtsman's Contract* is an attack on the landed gentry of this epoch, who are presented as a vicious, dispassionate crew of schemers, intent on using the "arrogant plebian outsider" they have hired as a pawn in their awful game; it is also a study of the relationship between the artist, his art and the world, distinguished by enjoyable performances by the main characters and fascinating camera work.

On Saturday, Oct. 13, the motion picture *Atomic Cafe* will be presented at 8 pm in room 102, Tilley Hall.

The film uses vintage newsreels, public service an-

nouncements, educational films, and interviews to show the horror of atomic war. The footage ranges from the bombing of Hiroshima, to a class of fourth grade students being instructed in how to protect

themselves in the event of an air raid.

Although there are some comical moments, the main theme of this film is unequivocally serious.

In 1984, with the threat of

nuclear war looming over our heads, this 1982 film should be both informative and entertaining. *Atomic Cafe* is sometimes comical, sometimes serious, but always provocative.

## Entertainment Briefs

Theatre New Brunswick is searching for a young actor to play the role of Tiny Tim in its holiday presentation, *Scrooge*.

The competition will be open to both girls and boys who appear to be 8 to 10 years old. The young actor will be required to begin rehearsals November 5 for a period of three weeks. After the rehearsal period, he or she must be able to appear in every performance in Fredericton and on tour around the province, making a total of three weeks' performance.

Those interested in arranging for an audition should contact the TNB office in Fredericton at 455-3080. They should

be prepared to sing a Christmas carol of their choice and to read a short piece that will be provided at the auditions. Auditions will be held at the Playhouse on Queen St. in Fredericton October 14 beginning at 10:00 a.m.

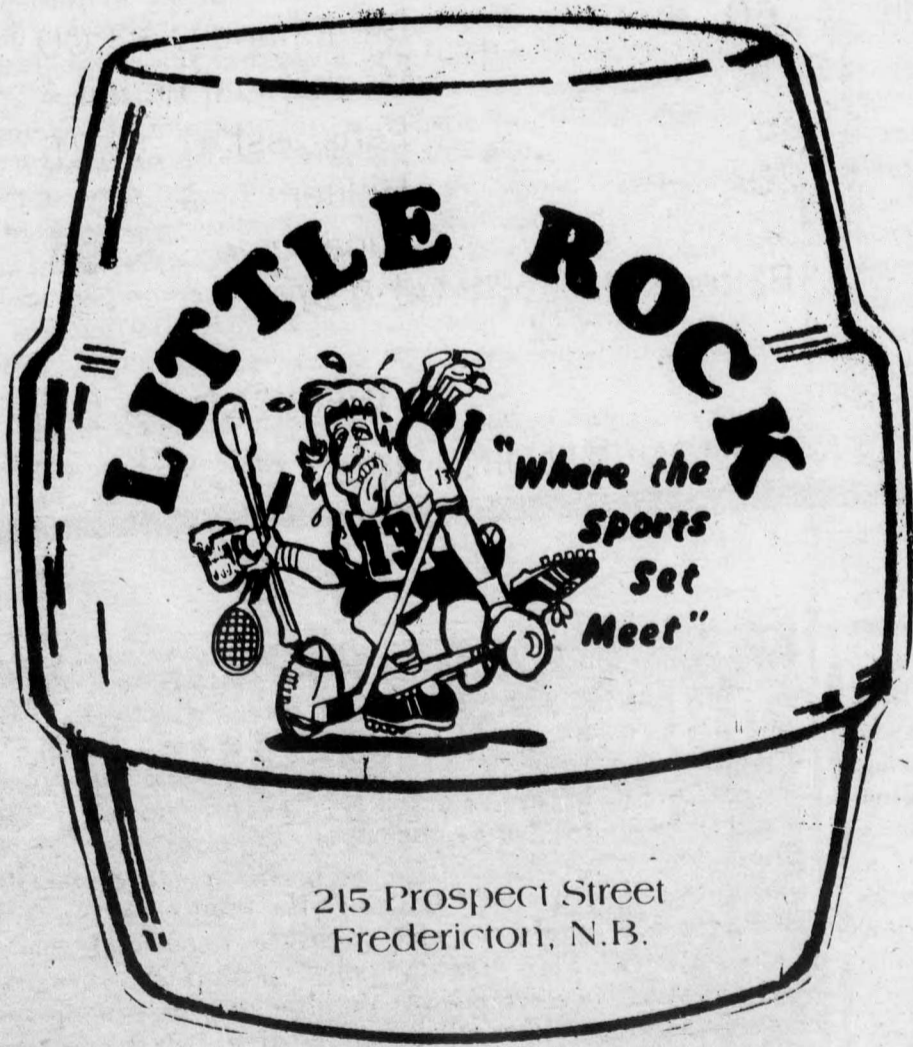
### Exhibition Centre Schedule

The Explorations Gallery at the Exhibition Centre will be displaying *From the Inside to the Outside* charcoal drawings by Murielle McDonald until October 7.

From October 13 - November 11 the exhibit *Clouds and Ca-*

nyons will be on view. This will present watercolors by Pat Pellech and porcelain works by Karen Burk. A reception to meet the artists will be Sunday, October 14 at 2:00 p.m.

An *Arts and Crafts Workshop* for children ages 7-10 will be held at the Exhibition Centre on Saturday mornings 10 a.m. - 12 noon from October 6 - November 10. Instructor Barry King, will lead the participants in a variety of projects from creating their own Halloween masks, to making mobiles and shadow puppets. A registration fee of \$25 is required for the course. To register please call 453-3747 or drop into the Centre during regular gallery hours.



## LITTLE ROCK OPENING TODAY

Welcome Students

Show your student I.D.  
for a very SPECIAL surprise  
from your friendly Little Rock  
staff.

"DAILY FOOD  
SPECIALS"