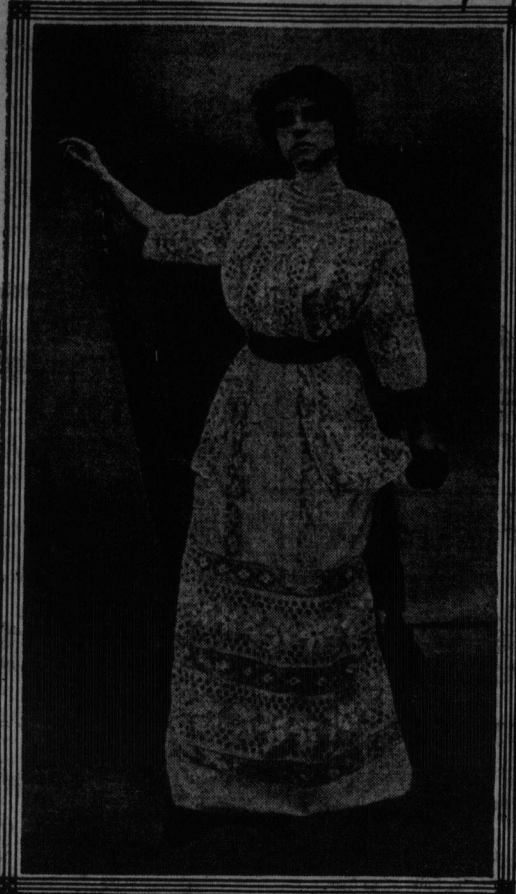




# TIMELY SUGGESTIONS FOR LINGERIE GOWNS



Simple and Effective



With an Apron Tunic

The Double Skirt



Filet and Eyelet Embroidery



Eyelet Work on Linen



Embroidered Batiste and Lace

EVERY woman will want to include at least one lingerie gown in her summer wardrobe.

Dame Fashion says (and who would not obey her dictum!) that the lingerie frock for the approaching season must be elaborate, at least to a certain degree.

Therefore considerable time and attention will necessarily have to be expended upon the making of these gowns; so it behooves every woman to begin early the planning and making of this particular costume. Laces and wash fabrics are tempting in prices, and there is no time like the present to buy.

From the great makers of fashion come several delightful models that, fortunately for us, are all copyable.

Take, for example, the frock fashioned of embroidered batiste combined with "all-over" valenciennes lace. The embroidery is cut out in circular motifs, bordered with insertion, to form a circular yoke effect over the lace bodice. Again, these motifs are seen in the narrow peplum over a girdele of soft black satin.

A short tunic effect is obtained by the valenciennes lace on the skirt, which is then finished with alternate bands of embroidery and lace insertion edged with frills of lace.

The black satin hem serves a double purpose; it protects the bottom of the skirt from wearing and also acts as a charming trimming.

Wide embroidered flouncing is employed in the next model. Here we have a double tunic of embroidery over the drop skirt, which is edged with wide linen fringe. The bodice of this gown is made with the fashionable one-sided effect, carried out by the aid of a broad rever of embroidery on the right and a band of embroidery on the left side.

The girdele is of lemon-colored satin. Fringe, by the way, plays a prominent part in lingerie gowns this season. It is

either of mercerized cotton or linen and, of course, is washable.

Eyelet embroidery combined with filet lace is seen in the next gown. Here the "set in" kimono sleeves are of embroidery and lace, with a fringed edge. The newest sleeves, you see, are all cut separately and set in under a pleat to give the kimono effect.

This skirt is also double, the upper portion finished in deep scallops edged with fringe, while the lower portion has a straight fringed edge.

The now fashionable scallops and short apron tunic are the salient features of an imported gown made of finest French embroidered batiste. No more charming gown could be found for the fair young debutante than this little frock, and it can be copied by the home dressmaker.

Quite simple in design and inexpensive, too, is the next model of fine linen. Embroidered bands, separated by lace insertion, form the entire gown, except for the tucked net yoke and cuffs. The girdele is of American beauty satin.

Linen embroidered in graduated circles of eyelets is used for the last model. Black taffeta undercuffs and hem correspond to the soft folded girdele. Small-ball fringe of Irish crochet is used with telling effect on both bodice and skirt. This is quite a simple yet exceedingly effective gown that can be worn on a multitude of occasions.

Is it not true that "Everywoman" would do well to copy one of these? With a pattern that emphasizes new lines, lace, embroidery or linen can be combined and allied with small trouble.

In constructing the bodice of a lingerie frock a tissue-paper pattern serves as an excellent foundation upon which the fabrics can be stitched, and when the bodice is completed the paper can be torn away. The construction of a skirt is the easier task; the same plan can be followed successfully.

Remember that the time to prepare for the first warm day is not when the day is dawning. The wise woman will avail herself of the decided styles and the first choice in lingerie fabrics.

