

WANTED
CITY OF ST. JOHN 4 P.C. BONDS.
CITY OF ST. JOHN 6 P.C. DUE
MAY 1st, 1911.
ST. JOHN STREET RAILWAY
BONDS, DUE 1925 OR 1927.
Submit lowest prices or will ex-
change for any of our present
bonds or investment stock hold-
ings.
Eastern Securities Ltd.
W. F. MAHON, Managing Dir.
Successors to W. F. Mahon & Co.
Phone 2558. St. John, N. B.

EASTERN S.S. CO.
Reliable and Popular Route Between
St. John and Boston
STEEL STEAMSHIPS
Calvin Austin and Governor Dingley
Complete Wireless Telegraph Equip-
ment.

Coastwise Route—Leave St. John
at 9:00 a. m. Mondays, Wednesdays
and Fridays for Eastport, Lubec, Port
Land and Boston.
Returning, leave Union Wharf, Bos-
ton, Mondays, Wednesdays and Fri-
days, at 9:00 a. m., and Portland at
5:00 p. m., for Lubec, Eastport and
St. John.
City Ticket Office, 47 King Street.
L. R. THOMPSON, T. F. & P. A.
WM. G. LEE, Agent, St. John, N. B.

"S. S. May Queen"

This popular steamer leaves St.
John, N. B., Wednesdays and Satur-
days for Grand Lake and Salmon
River at 7 a. m., returning Thursdays
and Mondays, touching at Gagetown.
This is the most beautiful and pic-
turesque route in the Maritime Pro-
vinces, also the best hunting ground
for moose and caribou, ducks, snipe
and partridge. Good trout fishing near
Chipman. Good hotel accommodation
can be procured at Chipman, and
small parties can be accommodated
on board the steamer.
R. H. WESTON, Manager.

N. B. Southern Railway

On and after SUNDAY, October 9,
1910, trains will run daily, Sunday
excepted, as follows:—
Lv. St. John East Ferry, 7:30 a. m.
Lv. West St. John, 7:40 a. m.
Arr. St. Stephen, 12:30 p. m.
Lv. St. Stephen, 1:45 p. m.
Arr. St. John, 6:25 p. m.

H. H. McLEAN, President.
Atlantic Standard Time.

DOMINION ATLANTIC RAILWAY
S. S. Prince Rupert leaves Reed's
Point Wharf daily at 7:45 a. m., con-
necting at Digby with trains east and
west, returning arrives at 6:30 p. m.
Sundays excepted.
A. C. CURRIE, Agent.
MONTREAL STOCK EXCHANGE.

The Sun Life Assurance Co. of Canada

Will support you in old age or look
after your family if you are pre-
maturely taken away. It will
cost you comparatively
little each year.

ASK OUR AGENTS FOR PRICES.
Assets nearly \$35,000,000.

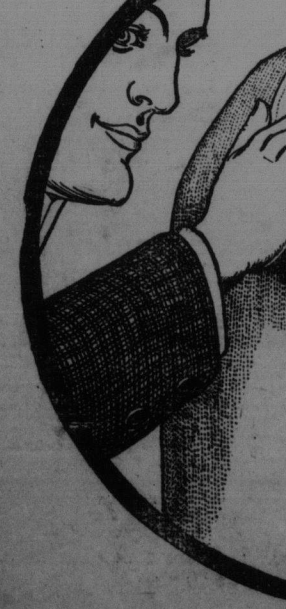
G. C. JORDAN, Manager for N. B.

CHICAGO GRAIN AND PRODUCE
MARKETS.

Range of Prices.

	Wheat	High	Low	Close
Dec.	94 1/2	95 1/2	94 1/2	95 1/2
May	101	102 1/2	101	102 1/2
July	97 1/2	98 1/2	97 1/2	98 1/2
Dec.	47 1/2	48 1/2	47 1/2	48 1/2
May	50 1/2	51 1/2	50 1/2	51 1/2
July	51 1/2	52 1/2	51 1/2	52 1/2
Dec.	31 1/2	32 1/2	31 1/2	32 1/2
May	34 1/2	35 1/2	34 1/2	35 1/2
July	35 1/2	36 1/2	35 1/2	36 1/2
Nov.	17 1/2	18 1/2	17 1/2	18 1/2
Jan.	17 1/2	18 1/2	17 1/2	18 1/2
May	16 1/2	17 1/2	16 1/2	17 1/2

Before the wool is spun into yarn
for Stanfield's Unshrinkable Under-
wear it is washed, scoured,
picked and combed repeatedly,
until it is so clean that even you
would say "good enough". But
our critical system knows no "good
enough" short of extreme perfec-
tion. For again when the garments



SHIPPING FINANCE

MONTREAL NEW YORK STOCK MARKET

(Quotations Furnished by Private Wires of J. C. Mackintosh and Co.,
Members of Montreal Stock Exchange, 111 Prince Wm. Street, St. John, N. B.,
Chubb's Corner.)

	Shares	High	Low	Close
Am. Copper	31700	71 1/4	71 1/4	70 3/4
Am. Steel Fdy.	1100	33 1/2	33 1/2	33 1/2
Am. Car and Fdy.	300	54 1/2	54 1/2	54 1/2
Am. Cotton Oil	400	67 1/2	67 1/2	66 1/2
Am. Loco.	400	42 1/2	42 1/2	42 1/2
Am. Sm. and Ref.	24500	77 1/2	77 1/2	77 1/2
Am. Tel. and Tel.	4300	140 1/4	139 1/4	139 1/4
Am. Sugar	47 1/2	48 1/2	47 1/2	47 1/2
Am. Steel Fdy.	47 1/2	48 1/2	47 1/2	47 1/2
Am. Copper	43 1/2	44 1/2	43 1/2	43 1/2
Atchafalca	103 1/2	104 1/2	104 1/2	104 1/2
Balt. and Ohio	800	108 1/2	108 1/2	108 1/2
B. R. T.	11300	78 1/2	78 1/2	78 1/2
Can. Pac. R.	12500	83 1/2	83 1/2	83 1/2
Ches. and Ohio	1600	198 1/2	198 1/2	198 1/2
Chl. and N. West.	2300	128 1/2	127 1/2	127 1/2
Col. Fuel and Iron	1000	150 1/2	149 1/2	149 1/2
Con. Gas	400	35 1/2	35 1/2	35 1/2
Del. and Hud.	700	138 1/2	137 1/2	137 1/2
Denver and R. G.	1000	33 1/2	33 1/2	34 1/2
Erie	600	30 1/2	31 1/2	30 1/2
General Electric	150	154 1/2	153 1/2	153 1/2
Gr. Nor. P.	3700	128 1/2	127 1/2	127 1/2
Illinois Central	500	132 1/2	132 1/2	132 1/2
Int. Mer.	11100	22 1/2	22 1/2	22 1/2
Nash. and Nash.	1300	148 1/2	147 1/2	147 1/2
Nor. and West.	22 1/2	23 1/2	23 1/2	23 1/2
Can. S. South.	1600	33 1/2	33 1/2	33 1/2
Miss. Kan. and Texas	500	35 1/2	35 1/2	35 1/2
Miss. Pacific	2200	56 1/2	56 1/2	56 1/2
Nat. Lead	1300	62 1/2	60 1/2	60 1/2
N. Y. Central	13800	119 1/2	118 1/2	118 1/2
N. Y. Ont. and West.	43 1/2	44 1/2	43 1/2	43 1/2
Nor. Pac.	4600	121 1/2	120 1/2	120 1/2
Nor. and West.	4000	100 1/2	99 1/2	99 1/2
Pa. M.	500	35 1/2	35 1/2	35 1/2
Penn.	6300	132 1/2	132 1/2	132 1/2
People's Gas	2200	109 1/2	109 1/2	109 1/2
Ry. Steel	200	35 1/2	34 1/2	34 1/2
Reading	17100	154 1/2	154 1/2	154 1/2
Rep. I. and S.	4500	34 1/2	34 1/2	34 1/2
Rock Island	21200	35 1/2	34 1/2	34 1/2
Sass. Sheffield	3000	55 1/2	55 1/2	55 1/2
Southern Pac.	5000	119 1/2	118 1/2	118 1/2
Soo.	500	132 1/2	131 1/2	131 1/2
Southern R.	1700	26 1/2	26 1/2	26 1/2
Un. Pac.	10200	175 1/2	175 1/2	175 1/2
U. S. Rubber	3700	51 1/2	51 1/2	51 1/2
Utah Copper	241900	78 1/2	78 1/2	78 1/2
U. S. Steel	1400	120 1/2	120 1/2	120 1/2
U. S. Steel P.	800	64 1/2	64 1/2	64 1/2
Virginia Chem.	29 1/2	29 1/2	29 1/2	29 1/2
Wabash P.	39 1/2	39 1/2	39 1/2	39 1/2
Western Union	71 1/2	72 1/2	72 1/2	72 1/2
Sales, 11 a. m., 417,000; Noon, 606,000; 1 p. m., 714,000; 2 p. m., 858,600; 3 p. m., 999,200.				

By direct private wires to J. C. Mackintosh & Co.

Beaver 31 3/4, Cobalt Lake 15 1/2, Cobalt Central 64 1/2, City Cobalt 21 1/2, Otis 2 1/2, Green-Meehan 2 1/2, Little Nipissing 26 1/2, Silver Queen 45 1/2, Can. Light & Power 57 1/2, Mexican Tram 123 1/2, La Rose 462 1/2.

MONTREAL COBALT AND CURB STOCKS.

By direct private wires to J. C. Mackintosh & Co.

Beaver 31 3/4, Cobalt Lake 15 1/2, Cobalt Central 64 1/2, City Cobalt 21 1/2, Otis 2 1/2, Green-Meehan 2 1/2, Little Nipissing 26 1/2, Silver Queen 45 1/2, Can. Light & Power 57 1/2, Mexican Tram 123 1/2, La Rose 462 1/2.

MONTREAL COTTON MARKET.

By direct private wires to J. C. Mackintosh & Co.

High. Low. Bid. Ask. Oct. 14 1/2 14 3/4 20 30 32 Nov. 14 1/2 14 3/4 16 19 21 Dec. 14 1/2 14 3/4 18 20 22 Jan. 14 1/2 14 3/4 21 23 25 Feb. 14 1/2 14 3/4 24 26 28 March 14 1/2 14 3/4 27 29 31 April 14 1/2 14 3/4 30 32 34 May 14 1/2 14 3/4 33 35 37 June 14 1/2 14 3/4 36 38 40 July 14 1/2 14 3/4 39 41 43 Aug. 14 1/2 14 3/4 42 44 46 Sept. 14 1/2 14 3/4 45 47 49 Oct. 14 1/2 14 3/4 48 50 52 Nov. 14 1/2 14 3/4 51 53 55 Dec. 14 1/2 14 3/4 54 56 58 Jan. 14 1/2 14 3/4 57 59 61 Feb. 14 1/2 14 3/4 60 62 64 March 14 1/2 14 3/4 63 65 67 April 14 1/2 14 3/4 66 68 70 May 14 1/2 14 3/4 69 71 73 June 14 1/2 14 3/4 72 74 76 July 14 1/2 14 3/4 75 77 79 Aug. 14 1/2 14 3/4 78 80 82 Sept. 14 1/2 14 3/4 81 83 85 Oct. 14 1/2 14 3/4 84 86 88 Nov. 14 1/2 14 3/4 87 89 91 Dec. 14 1/2 14 3/4 90 92 94 Jan. 14 1/2 14 3/4 93 95 97 Feb. 14 1/2 14 3/4 96 98 100 March 14 1/2 14 3/4 99 101 103 April 14 1/2 14 3/4 102 104 106 May 14 1/2 14 3/4 105 107 109 June 14 1/2 14 3/4 108 110 112 July 14 1/2 14 3/4 111 113 115 Aug. 14 1/2 14 3/4 114 116 118 Sept. 14 1/2 14 3/4 117 119 121 Oct. 14 1/2 14 3/4 120 122 124 Nov. 14 1/2 14 3/4 123 125 127 Dec. 14 1/2 14 3/4 126 128 130 Jan. 14 1/2 14 3/4 129 131 133 Feb. 14 1/2 14 3/4 132 134 136 March 14 1/2 14 3/4 135 137 139 April 14 1/2 14 3/4 138 140 142 May 14 1/2 14 3/4 141 143 145 June 14 1/2 14 3/4 144 146 148 July 14 1/2 14 3/4 147 149 151 Aug. 14 1/2 14 3/4 150 152 154 Sept. 14 1/2 14 3/4 153 155 157 Oct. 14 1/2 14 3/4 156 158 160 Nov. 14 1/2 14 3/4 159 161 163 Dec. 14 1/2 14 3/4 162 164 166 Jan. 14 1/2 14 3/4 165 167 169 Feb. 14 1/2 14 3/4 168 170 172 March 14 1/2 14 3/4 171 173 175 April 14 1/2 14 3/4 174 176 178 May 14 1/2 14 3/4 177 179 181 June 14 1/2 14 3/4 180 182 184 July 14 1/2 14 3/4 183 185 187 Aug. 14 1/2 14 3/4 186 188 190 Sept. 14 1/2 14 3/4 189 191 193 Oct. 14 1/2 14 3/4 192 194 196 Nov. 14 1/2 14 3/4 195 197 199 Dec. 14 1/2 14 3/4 198 200 202 Jan. 14 1/2 14 3/4 201 203 205 Feb. 14 1/2 14 3/4 204 206 208 March 14 1/2 14 3/4 207 209 211 April 14 1/2 14 3/4 210 212 214 May 14 1/2 14 3/4 213 215 217 June 14 1/2 14 3/4 216 218 220 July 14 1/2 14 3/4 219 221 223 Aug. 14 1/2 14 3/4 222 224 226 Sept. 14 1/2 14 3/4 225 227 229 Oct. 14 1/2 14 3/4 228 230 232 Nov. 14 1/2 14 3/4 231 233 235 Dec. 14 1/2 14 3/4 234 236 238 Jan. 14 1/2 14 3/4 237 239 241 Feb. 14 1/2 14 3/4 240 242 244 March 14 1/2 14 3/4 243 245 247 April 14 1/2 14 3/4 246 248 250 May 14 1/2 14 3/4 249 251 253 June 14 1/2 14 3/4 252 254 256 July 14 1/2 14 3/4 255 257 259 Aug. 14 1/2 14 3/4 258 260 262 Sept. 14 1/2 14 3/4 261 263 265 Oct. 14 1/2 14 3/4 264 266 268 Nov. 14 1/2 14 3/4 267 269 271 Dec. 14 1/2 14 3/4 270 272 274 Jan. 14 1/2 14 3/4 273 275 277 Feb. 14 1/2 14 3/4 276 278 280 March 14 1/2 14 3/4 279 281 283 April 14 1/2 14 3/4 282 284 286 May 14 1/2 14 3/4 285 287 289 June 14 1/2 14 3/4 288 290 292 July 14 1/2 14 3/4 291 293 295 Aug. 14 1/2 14 3/4 294 296 298 Sept. 14 1/2 14 3/4 297 299 301 Oct. 14 1/2 14 3/4 300 302 304 Nov. 14 1/2 14 3/4 303 305 307 Dec. 14 1/2 14 3/4 306 308 310 Jan. 14 1/2 14 3/4 309 311 313 Feb. 14 1/2 14 3/4 312 314 316 March 14 1/2 14 3/4 315 317 319 April 14 1/2 14 3/4 318 320 322 May 14 1/2 14 3/4 321 323 325 June 14 1/2 14 3/4 324 326 328 July 14 1/2 14 3/4 327 329 331 Aug. 14 1/2 14 3/4 330 332 334 Sept. 14 1/2 14 3/4 333 335 337 Oct. 14 1/2 14 3/4 336 338 340 Nov. 14 1/2 14 3/4 339 341 343 Dec. 14 1/2 14 3/4 342 344 346 Jan. 14 1/2 14 3/4 345 347 349 Feb. 14 1/2 14 3/4 348 350 352 March 14 1/2 14 3/4 351 353 355 April 14 1/2 14 3/4 354 356 358 May 14 1/2 14 3/4 357 359 361 June 14 1/2 14 3/4 360 362 364 July 14 1/2 14 3/4 363 365 367 Aug. 14 1/2 14 3/4 366 368 370 Sept. 14 1/2 14 3/4 369 371 373 Oct. 14 1/2 14 3/4 372 374 376 Nov. 14 1/2 14 3/4 375 377 379 Dec. 14 1/2 14 3/4 378 380 382 Jan. 14 1/2 14 3/4 381 383 385 Feb. 14 1/2 14 3/4 384 386 388 March 14 1/2 14 3/4 387 389 391 April 14 1/2 14 3/4 390 392 394 May 14 1/2 14 3/4 393 395 397 June 14 1/2 14 3/4 396 398 400 July 14 1/2 14 3/4 399 401 403 Aug. 14 1/2 14 3/4 402 404 406 Sept. 14 1/2 14 3/4 405 407 409 Oct. 14 1/2 14 3/4 408 410 412 Nov. 14 1/2 14 3/4 411 413 415 Dec. 14 1/2 14 3/4 414 416 418 Jan. 14 1/2 14 3/4 417 419 421 Feb. 14 1/2 14 3/4 420 422 424 March 14 1/2 14 3/4 423 425 427 April 14 1/2 14 3/4 426 428 430 May 14 1/2 14 3/4 429 431 433 June 14 1/2 14 3/4 432 434 436 July 14 1/2 14 3/4 435 437 439 Aug. 14 1/2 14 3/4 438 440 442 Sept. 14 1/2 14 3/4 441 443 445 Oct. 14 1/2 14 3/4 444 446 448 Nov. 14 1/2 14 3/4 447 449 451 Dec. 14 1/2 14 3/4 450 452 454 Jan. 14 1/2 14 3/4 453 455 457 Feb. 14 1/2 14 3/4 456 458 460 March 14 1/2 14 3/4 459 461 463 April 14 1/2 14 3/4 462 464 466 May 14 1/2 14 3/4 465 467 469 June 14 1/2 14 3/4 468 470 472 July 14 1/2 14 3/4 471 473 475 Aug. 14 1/2 14 3/4 474 476 478 Sept. 14 1/2 14 3/4 477 479 481 Oct. 14 1/2 14 3/4 480 482 484 Nov. 14 1/2 14 3/4 483 485 487 Dec. 14 1/2 14 3/4 486 488 490 Jan. 14 1/2 14 3/4 489 491 493 Feb. 14 1/2 14 3/4 492 494 496 March 14 1/2 14 3/4 495 497 499 April 14 1/2 14 3/4 498 500 502 May 14 1/2 14 3/4 501 503 505 June 14 1/2 14 3/4 504 506 508 July 14 1/2 14 3/4 507 509 511 Aug. 14 1/2 14 3/4 510 512 514 Sept. 14 1/2 14 3/4 513 515 517 Oct. 14 1/2 14 3/4 516 518 520 Nov. 14 1/2 14 3/4 519 521 523 Dec. 14 1/2 14 3/4 522 524 526 Jan. 14 1/2 14 3/4 525 527 529 Feb. 14 1/2 14 3/4 528 530 532 March 14 1/2 14 3/4 531 533 535 April 14 1/2 14 3/4 534 536 538 May 14 1/2 14 3/4 537 539 541 June 14 1/2 14 3/4 540 542 544 July 14 1/2 14 3/4 543 545 547 Aug. 14 1/2 14 3/4 546 548 550 Sept. 14 1/2 14 3/4 549 551 553 Oct. 14 1/2 14 3/4 552 554 556 Nov. 14 1/2 14 3/4 555 557 559 Dec. 14 1/2 14 3/4 558 560 562 Jan. 14 1/2 14 3/4 561 563 565 Feb. 14 1/2 14 3/4 564 566 568 March 14 1/2 14 3/4 567 569 571 April 14 1/2 14 3/4 570 572 574 May 14 1/2 14 3/4 573 575 577 June 14 1/2 14 3/4 576 578 580 July 14 1/2 14 3/4 579 581 583 Aug. 14 1/2 14 3/4 582 584 586 Sept. 14 1/2 14 3/4 585 587 589 Oct. 14 1/2 14 3/4 588 590 592 Nov. 14 1/2 14 3/4 591 593 595 Dec. 14 1/2 14 3/4 594 596 598 Jan. 14 1/2 14 3/4 597 599 601 Feb. 14 1/2 14 3/4 600 602 604 March 14 1/2 14 3/4 603 605 607 April 14 1/2 14 3/4 606 608 610 May 14 1/2 14 3/4 609 611 613 June 14 1/2 14 3/4 612 614 616 July 14 1/2 14 3/4 615 617 619 Aug. 14 1/2 14 3/4 618 620 622 Sept. 14 1/2 14 3/4 621 623 625 Oct. 14 1/2 14 3/4 624 626 628 Nov. 14 1/2 14 3/4 627 629 631 Dec. 14 1/2 14 3/4 630 632 634 Jan. 14 1/2 14 3/4 633 635 637 Feb. 14 1/2 14 3/4 636 638 640 March 14 1/2 14 3/4 639 641 643 April 14 1/2 14 3/4 642 644 646 May 14 1/2 14 3/4 645 647 649 June 14 1/2 14 3/4 648 650 652 July 14 1/2 14 3/4 651 653