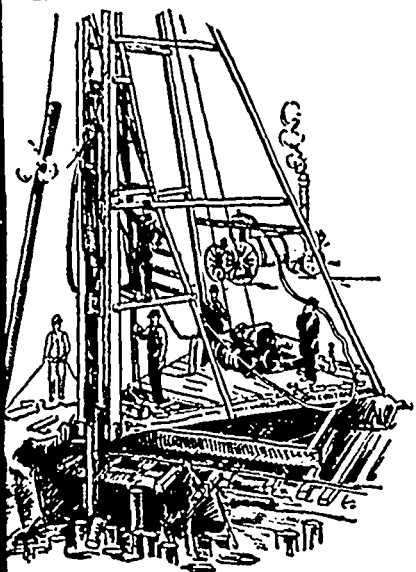


MUNICIPAL ENGINEERS, CONTRACTORS AND MATERIALS



PILE DRIVING

on land or water by Steam Pile Drivers or Drop Hammers.

**Portable Boilers
Hoisting Engines
Pumping Machinery
TO LET**

Bridge Building, Trestle Work, Wharves,
Dams, Diving Submarine Work and
General Contracting.

WM. HOOD & SON

10 Richmond Sq. - MONTREAL

DEBENTURES BOUGHT

Municipalities saved all possible trouble
by applying to

G. A. STIMSON & CO.
Investment Dealers

24 and 26 King St. W. - TORONTO

Paving Granite

Granite Sets for Street Paving. - CURBING cut
to any shape ordered. - Fine Rich Colors for
Building and Monumental Purposes.

Quarries, St. Philippe d'Argenteuil, P. Q.

Address all communications to

JOS. BRUNET - COTE DES NEIGES, MONTREAL

Please mention the CONTRACT RECORD
when corresponding with advertisers.



THIS Preparation is used for the following purposes:
Prevention of Dry Rot, Fungus Decay and the at-
tack of White Ant and Termites in Timber; Preservation
of Beams, Sills, Flooring, Wainscoting, Shingles, Wood
Curbs, Sidewalks, Slat-walks, and Block Pavements.
Preparation for sale or Timber treated at Factory,
Corner Shaw Street and C. P. R. Track,
Circulars sent of Application. Tel. 978.

OFFICE: Molson's Bank Building, Vancouver, B.C.

Tel. 14 - P.O. Box 106.

PORTLAND CEMENT

High Grade PORTLAND CEMENT, for Concrete Work of all descriptions, Heavy Masonry, Sidewalks, etc.
EXCLUSIVELY used by the CANADIAN PACIFIC RAILWAY CO. on all their works in British Columbia
also by the DOMINION GOVERNMENT, the MUNICIPAL AUTHORITIES of VANCOUVER
and VICTORIA, and by all the leading Contractors in BRITISH COLUMBIA

Manufactured by

THE BRITISH COLUMBIA PORTLAND CEMENT CO.

Prices and Circulars on application.

VANCOUVER, B. C.

W. & F. P. CURRIE & CO.

MONTREAL

Importers of

SEWER PIPES.

CHIMNEY TOPS,

VENT LININGS,

FLUE COVERS,

FIRE BRICKS,

FIRE CLAY,

WHITING.



PORTLAND CEMENTS,

HIGH GRADE ENGLISH

B. S. & Co. "ANCHOR,"

ALSO OTHER BRANDS,

PLASTER OF PARIS,

BORAX,

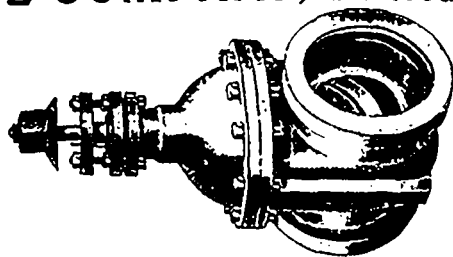
CHINA CLAY.

The KERR ENGINE COMPANY, Limited

PUMPING MACHINERY,
HYDRANTS and VALVES

Are our Specialties.

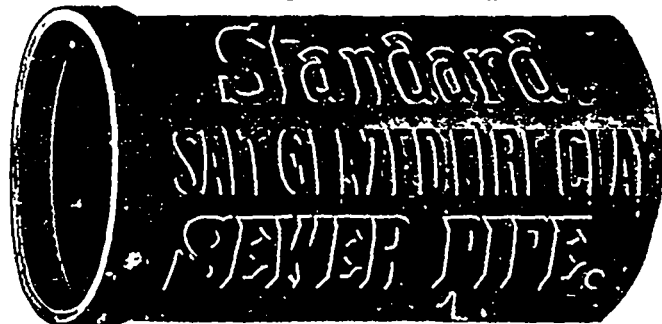
Don't fail to write us for Catalogue and Prices.



WALKERVILLE, - ONTARIO

THE HAMILTON AND TORONTO SEWER PIPE CO.
(LIMITED.)

HEAD OFFICE AND FACTORY: HAMILTON, CANADA

THE STANDARD DRAIN PIPE CO.
OF ST. JOHNS, P. Q., (LIMITED)

- FOR -
**SEWERS,
CULVERTS
AND
WATER PIPES.
INVERTS
For Brick Sewers**

Write for Discounts

Manufacturers
Salt-Glazed
Vitrified
**SEWER
PIPES**

Double Strength
Railway Cul-
vert Pipes,
Inverts, Vents,

AND ALL KINDS OF FIRE CLAY GOODS