

# Toronto Lithographing Co.

LIMITED

The Largest Lithographing and Engraving  
Establishment in the British Colonies

King and Bathurst Streets == Toronto

## Niagara River Line

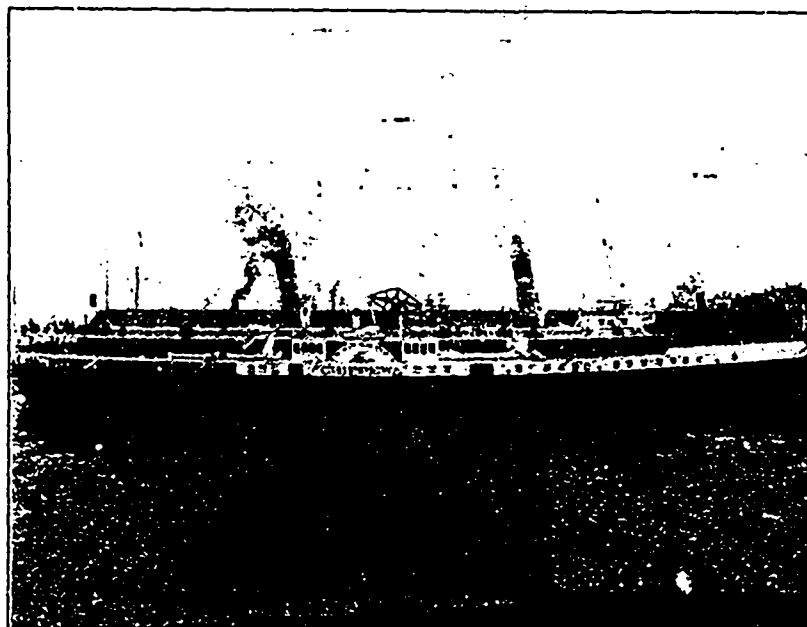
STEEL STEAMERS

"Chicora," "Corona," "Chippewa"

Leaves Toronto 5 times daily (except Sunday) for  
Niagara, Lewiston and Queenston, connecting with  
New York Central and Michigan Central Railways, and  
Electric Railways for Falls, Buffalo, New York, etc. Only  
line giving views of lower Niagara, Rapids, Brock's  
Monument, Falls, etc.

TICKETS AT ALL PRINCIPAL OFFICES

JOHN FOY, Manager



ALL MILITIAMEN  
VISIT

The Strand

E. J. EVANS,  
Proprietor

Hotel

5 Adelaide St. East, TORONTO

PRIVATE SITTING ROOMS

## Carling's Porter IS GOOD PORTER.

It is made from the very highest grade of Irish malt, imported direct  
from Dublin by the Carling Brewing and Malting Company, Limited.

Its purity is guaranteed by the label on the bottle. It is brewed  
with the greatest care, and is thoroughly matured before it leaves the  
brewery.

When porter is ordered as a tonic the best is not too good. Those  
who want the best insist upon Carling's. Your dealer sells it.

CARLING, LONDON

## WINSOR & WOODLEY



Carpenters  
and  
Builders,  
117 to 121  
Peter  
Street,  
Toronto.  
Phone  
2216.

Large stock of Building Material always  
on hand. Jobbing promptly attended to.  
Office Fixtures a Specialty.

FINISHED.

## Canada Atlantic Railway

Ottawa, Arnprior & Parry Sound Railway  
Parry Sound Colonization Railway

The Short Route between Ottawa, Montreal, Quebec, Halifax, Boston, New York and all Intermediate Points

Forms direct connection at Montreal, Bonaventure Depot, with the Grand Trunk Railway, for Ottawa, Arnprior, Renfrew, etc., etc.

CHIEF OFFICES—OTTAWA, ONT., CANADA

C. J. SMITH, Gen. Passenger Agent

E. J. CHAMBERLIN, Gen. Manager



The Canadian Militiaman is also printed on our Coated Paper.