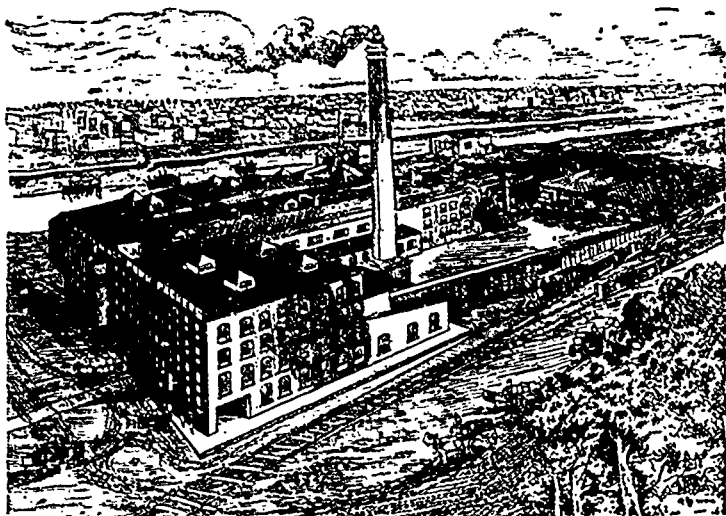


# GRIFFIN HAMS



ARE MADE FROM FINE, GRAIN FED HOGS. THE KIND THAT' PRODUCE TENDER, JUICY HAMS. THEY ARE CURED AND SMOKED WITH PARTICULAR CARE IN ORDER TO PRODUCE THE FAMOUS GRIFFIN BRAND FLAVOR

**J. Y. GRIFFIN & CO.** Pork Packers  
WINNIPEG  
Branches—Vancouver and Nelson

### Fall Styles in Shoes.

The tendency of styles in all lines of shoes is decidedly along common sense lines, and will undoubtedly meet with the full approval of the retail trade. Fall styles will result in an article of footwear that can be carried in stock for the next ten years, and which will sell almost as readily then as this fall. This will avoid the usual run of dead stock on the shelves of the retailer, which has sometimes followed the adoption of ultra styles in footwear, and will make all of the shoes taken in stock this fall saleable. The stylish shoe this fall will conform closely to the shape of the foot, it will be comfortable, neat fitting, and will not go to the extremes that have sometimes prevailed in the past. It will have some features, which will distinguish it from shoes formerly sold, but these will not be carried to extremes.

The sole of the fall shoe will be heavy, and will project beyond the foot on all sides including the heel. It will be sewn with the cable stitch, and in extreme cases may extend considerably beyond what it did in the shoes worn a year ago. This style will apply to men's, women's and children's shoes, but will stop short of infants' shoes. The sole will be some heavier than a year ago, the idea being to prevent the cold from penetrating to the foot. Shoes, without arctics and overshoes are being worn more and more in this country, and it has been found upon investigation that if the bottom of the foot can be kept warm, the whole foot will remain so. This style therefore combines both utility and modishness.

On most of the shoes being manufactured for fall and winter the toe is made on the medium last. It does not represent either extreme narrowness or extreme width, but is comfortable and neat in appearance. This is another common sense tendency in the fall shoes. It will be found upon investigation that medium toes meet with the popular approval, that there are many who go to neither extreme in fashion, and who will always demand a medium toe. Shoes made according to this style will therefore be saleable to the average person long after present styles change.

Lace shoes will prevail almost entirely, being very stylish, and will include men's, women's, youth's and children's shoes, and some infant's shoes will be made to lace, although many mothers prefer button shoes for infants, and as style is not desired so much in this class, button shoes will undoubtedly continue to be offered and will be sold to some extent. Lace shoes will be the correct thing, however, from the standpoint of style and will be used almost altogether by adults and children above five or six years of age.

In heels there will be a slight change in women's and misses' shoes. The tendency the past six months has been toward very low heels, with spring heels for misses receiving considerable attention. For fall wear heels will be straighter than for some time and will be of medium height, some higher than those offered the trade last spring.

Black leathers, some heavier than have been used in the past will be made up almost altogether. Box calf, calfskin, and heavy leathers will be used almost exclusively, and while some vic kid and other soft leathers will be made up they will not be so modish, and will be purchased largely where the wearer is to be indoors, and desires an easy shoe. For out of door wear in this climate heavy leathers are more appropriate during cold weather, and give better results. And this is another instance of where utility was considered first in forming the styles for fall and winter wear. While some tan and russet shoes will be made up to meet the requirements of the trade, they will not be fashionable, and retailers should purchase them sparingly, and only to meet the demand from customers who are known to have a preference for them.

Patent leather and box enamel shoes, for both men and women will be stylish for fine wear, and are being produced in large quantities. They will be more suitable for parties and evening wear than on the street, however, and retailers should take in these goods only to meet the known requirements of their trade.—Commercial Bulletin.

Many a man has discovered after mixing politics with his business that he has no business to mix with his politics.—Ex.

## Buyers of Butter and Eggs

THE YEAR ROUND

### To-Day's Prices Nett:

Fresh y Gathered Eggs	-	-	12c
Straight Dairy Butter	-	-	11c
Fine Creamery Butter	-	-	16c

Delivered at Winnipeg.

August 1, 1901.

**R. A. ROGERS & COMPANY Ltd.**  
WINNIPEG

F. D. ROE, President

R. ABERNETHY, Vice-President

T. F. PATERSON, Sec.-Treas.

## The Canadian Pacific Lumber Company Limited



MANAGER

PORT MOODY, B.C.

Manufacturers of and Wholesale Dealers in all Classes of British Columbia

**LUMBER, LATH, SHINGLES, MOULDINGS, Etc.**

CAPACITY: LUMBER—60,000 feet per Day; LATH—20,000; SHINGLES—120,000.

We have the largest dry kiln capacity of any mill in B.C., also the largest amount of sheds, and these are well stocked with Manitoba lumber. We have seven planers and are prepared to ship promptly. We understand the requirements of Manitoba dealers. Send to us for your next car. F. V. Town, Manitoba Salesman