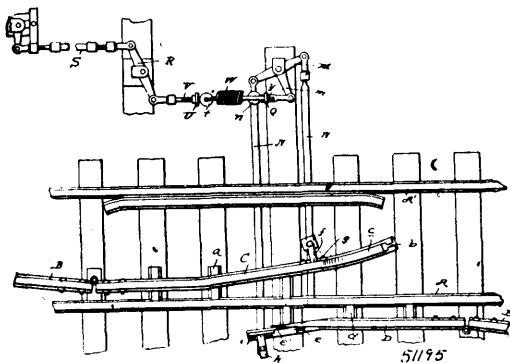
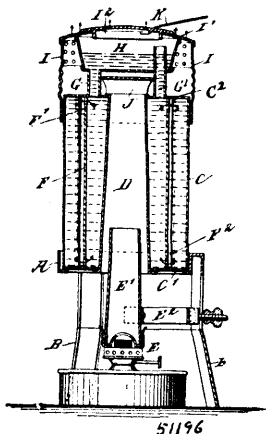


No. 51,195. Railway Frog. (Rail de croisement.)

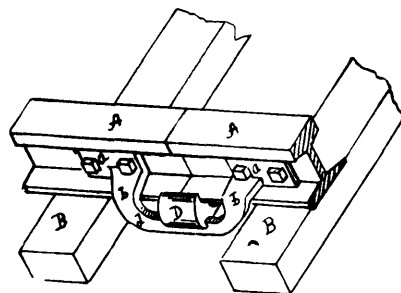
Duncan McPherson, Montreal, Quebec, Canada, 3rd February, 1896; 6 years. (Filed 9th Jan., 1895.)

Claim.—1st. In combination with an unbroken main rail portions of a broken turnout rail arranged upon opposite sides of the main rail, a frog comprising a member connected in a hinged manner with the end of the inner turnout rail portion and having its free portions bent so that its end will rest away from the main rail when it is adjusted against said rail, and a member connected in a hinged manner with the end of the outer turnout rail portion and adapted to be adjusted against the opposite side of the main rail with respect to the first named member, a lever M, having an angular arm *m*, rods connecting the opposite ends of said lever and the frog members. a rod T, for connection with a switch operating mechanism and having a reduced end *z*, a plate adjustably fixed on said rod, a rod connected to said plate and having an eye, a rod P, connected with the arm or branch *m*, of the lever M, and having an eye, a coiled spring having its ends connected to the eyes of rods V, P, and surrounding the rod T, a plate Q, mounted on and secured to the rod P, and having an aperture receiving the reduced end of the rod T, and a weak device for holding the rod T, against movement with respect to said plate Q, substantially as specified. 2nd. The combination of two movable frog members arranged on opposite sides of a main rail and adapted to be thrown in opposite directions on and off the same, a lever, rods connecting the opposite ends of the lever and the frog-members, a rod for connection with a switch operating mechanism, a connection easily changed from rigid to flexible between said rod and the lever and a coiled spring connected with said rod and the lever, substantially as specified.

No. 51,196. Heater. (Calorifere.)

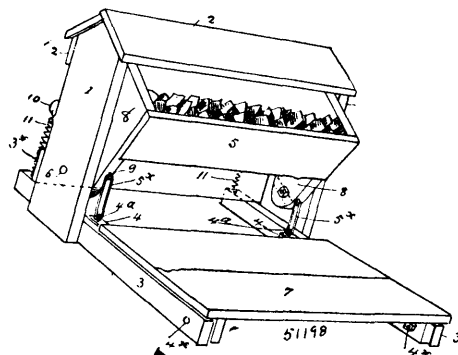
Herman Gutschmidt, Jersey City, New Jersey, U.S.A., 3rd February, 1896; 6 years. (Filed 8th January, 1896.)

Claim.—A heater comprising the outer corrugated shell C, having heads C¹, C², the inner plain cylinder F, having upper and lower openings F¹, F², the central heating flue D, extending through the heads C¹, C², the tank H, having pipes G, G¹, supporting it above the heads C², and connecting its interior at different heights with the water space within the shell C, the higher pipe G¹, forming an air vent at the time shell C is filled with water, a foraminated hood I inclosing the upper end of the shell C, and its water tank H, and having a removable cover I² over the upper open end of said tank, the heat from the flue D, discharging under and around the tank H, in the chamber formed by the hood I, substantially as described.

No. 51,197. Rail Joint. (Joint de rail.)

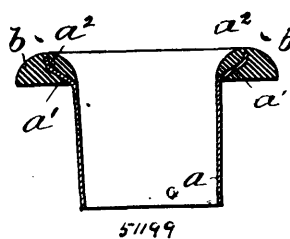
Henry J. Schmick, Hamburg, Pennsylvania, U.S.A., 3rd February, 1896; 6 years. (Filed 8th January, 1896.)

Claim.—1st. The combination in a rail joint, of the meeting ends of the rails, trusses secured to the rails and extending across the joint below the bases of the rails, and a supporting block interposed between said trusses and the rail bases, said supporting block being shouldered to engage with the trusses and rails in order to prevent lateral movement, substantially as specified. 2nd. The combination in a rail joint, of the meeting ends of the rails, trusses extending across the joint below the bases of the rails and having downwardly projecting hooked ends engaging with openings in the base flanges of the adjoining rails, and a supporting block interposed between said trusses and the rail bases, substantially as specified. 3rd. The combination in a rail joint, of the meeting ends of the rails, trusses extending across the joint below the bases of the rails, and having hooked ends engaging with the adjoining rails, a supporting block interposed between the trusses and the rail bases and having at one end a hook embracing the rail flanges and forming a chair, and a sliding key adapted to the other end of the supporting block and bearing against one of the trusses, substantially as specified.

No. 51,198. Salt Trough. (Auge à sel.)

Christopher M. Arthur, Bethany, Missouri, U.S.A., 3rd February, 1896; 6 years. (Filed 7th January, 1896.)

Claim.—In a device of the character set forth, the combination of uprights supporting a cover or roof, lower sills to which said uprights are secured, a box or trough pivotally mounted between the said uprights and adapted to move under the said cover and having ears projecting rearwardly therefrom, operating beams pivotally connected to the said sills, a platform on the operating beams, links connected to the rear of the operating beams and the lower front portion of the trough or box, and springs attached to the rear of the trough or box and to said projecting ears, substantially as and for the purposes specified.

No. 51,199. Eyelet. (Éillet.)

Theophilus King Trustee, Boston, assignee of Eleazer, Kempshall, Sharon, both of Massachusetts, U.S.A., 3rd February, 1896; 6 years. (Filed 26th August, 1895.)