

MACKINNON, DEBECK & CO.



MINING BROKERS AND AGENTS.

Having been residents of British Columbia for the past twenty-six years, we are in a position to furnish the most reliable information to be obtained respecting the valuable mineral resources of the province. Correspondence solicited. . . . Represented in London, Eng., by prominent financial brokers. Head office of the Golden Cache Mines Co., Ltd., of Lillooet, B.C. Cable address, "CORTES," Vancouver, B.C. Oodes: A.B.C., Moreing & Neal; Bedford-McNeill.

611 Hastings Street West,

VANCOUVER, B.C.

Thos. T. McVittie,

F. ADRIAN MEYER BROKER

—P.L.S. AND C.E.,—

Sub-Collector of Customs. . . .

Deputy Collector of Inland Revenue.

—FORT STEELE, B.C.

Notary Public

VERNON, B.C.

M. BEATTY & SONS,

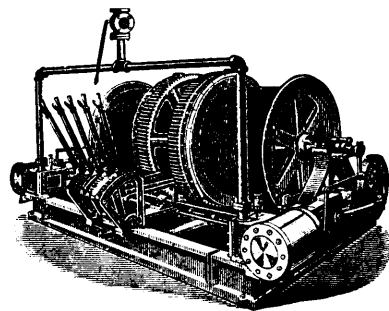
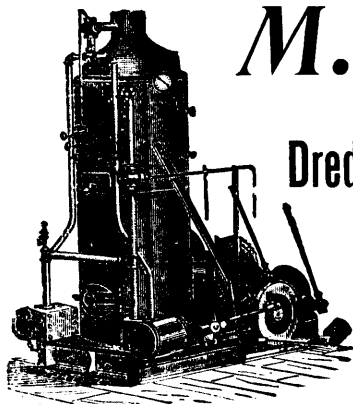
WELLAND, ONTARIO,

Dredges, Ditchers and Steam Shovels,

For Dredging, Ditching, Dyking, Gold Mining, Etc.
Of various styles and sizes to suit any work.

Mine Hoists, Hoisting Engines, Stone Derricks, Horsepower
Hoisters, Suspension Cableways, Submarine Rock
Drilling Machinery, Gang Stone Saws, Centri-
fugal Pumps for Drainage Works, Pump-
ing Sand, Gold Mining, Etc.

We also furnish WIRE ROPE at Lowest Prices



Joshua Hendy Machine Works,

Nos. 38 to 44 Fremont St., SAN FRANCISCO, Cal., U.S.A.

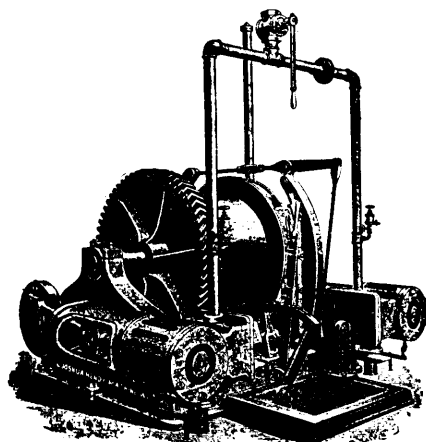
—MANUFACTURERS OF AND DEALERS IN—

Hydraulic, Quartz Mining, Milling Machinery

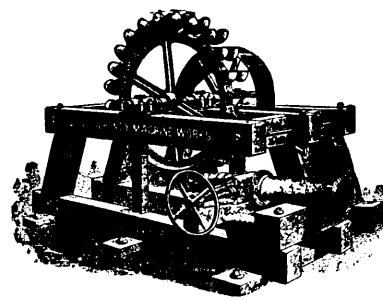
—COMPRISING—

HYDRAULIC GIANTS, CONCENTRATORS,
WATER GATES, SMELTERS,
SHEET IRON and HOISTING and
STEEL PIPE, PUMPING PLANTS,
STAMP MILLS, SAW MILLS,
ORE CRUSHERS, MINE and MILL
ORE FEEDERS, SUPPLIES, Etc., Etc.

Catalogues and Prices Furnished
Upon Application



HOISTING ENGINE.



IMPACT WATER WHEEL.

ENGRAVINGS!

PORTRAITS! BUILDINGS! SCENERY!

Fac-similes of Signatures, Letters and Engravings of all kinds for Book and Newspaper Printing. Map Engravings from Tracings. Also Reproductions from Photographs, Brush Drawings and Prints. Fine Book and Catalogue Illustrations. Good Work at Low Prices.

SPIKE BROS.' COMPANY, Tacoma, Wash.

