

DIP YOUR SHEEP

Sheepmen and farmers who use Cooper Dips have healthier sheep—get more wool and better fleeces. More than half the wool and flannel of the world is supplied at cost to all users by Cooper Dips.

COOPER'S POWDER DIP

Leading sheep dip for 65 years. Used on 250 million sheep a year. Kills ticks, lice, mites and all parasites. Does not stain the wool, but increases yield and improves the quality. 25 gal. pkts. 50c. 100 gal. 2.00.

COOPER'S FLUID DIP

For all animals. A highly concentrated, non-poisonous fluid dip. Kills ticks, lice, mites and all parasites. Does not stain the wool, but increases yield and improves the quality. 25 gal. pkts. 50c. 100 gal. 2.00.

COOPER'S WORM TABLETS

Best remedy for intestinal worms in Horses, Sheep, Cattle and Pigs. These tablets offer the advantage of correct doses and certain results. Dose—one for lamb or foal, two for pig or hog, three for horses.

COOPER'S "LAVENE"

Most effective skin dressing for horses, cattle and pigs. Relieves all cases of mange and scab on one dressing. Search for a skin and attacks the disease at its root. Improves the skin and renders hair soft and glossy. Is used by many of the breeders in preparing animals for show.

ADIAN DRUG CO. Ltd.

St. John, N. B.

RE STARTLING EVIDENCE GIVEN

St. John, Sept. 28.—More extraordinary evidence was offered today in the hearing of the petition to unseat J. R. Stratton for West Peterborough. Four years ago on October 28, 1913, he received \$2 in a bank of the Liberal candidate, H. Leary, practically without any payment between them. He made affidavits denying their statements. The curious part of the story was that Stratton had sold their votes. Two that they had already voted a money was paid over, while Stratton, William Ashley, protested that he had no knowledge why the money was given.

HERMAN DYING OF STONE IN THE BLADDER

His passed the stone. 513 James St., Hamilton, Ont. years ago I was taken down by the doctors called inflammation of the bladder—intense pains back and loins, frequent urination, in urinating. The pain was in the region of the bladder, attacks, which became more and more unbearable until I became so weak that I could not walk across the floor. Doctors do nothing to help me. My wife in the paper about Gin Pills for a box. The very first I felt that Gin Pills were doing me good. The pain passed at once, and the attacks were frequent. In six weeks the stone in the bladder came away and I stopped entirely. I have had no more of the trouble and have not had a stone on account of it. I express myself strong enough to speak of what Gin Pills have done for me. When I remember how weak and how near I was to death and strong and able to do a day's work, I feel I should speak of other sufferers of my experience of the wonderful merits of Gin Pills.

JOHN HERMAN. Don't have to buy Gin Pills in sample and feel that at least you will find the remedy that will cure you—then buy Gin Pills at 25c a box, 4 for \$2.00 per, please that Gin Pills are a positive guarantee of a cure money back. And this guarantee is backed by the largest wholesale house in Canada, who will refund your money if you are not cured.

LATEST PARIS FASHIONS IN EVENING GOWNS

Heavy Satin, Brocade and Voile de Soie Trimmed with Jet, Rhinestones and Gold Embroidery.



BY A. T. ASHMORE.

EVENING gowns for the autumn and winter already indicate that there is to be a decided change from the exaggerated styles of last winter. There is still a marked individuality, but the conspicuous effects that were becoming so to so few women and required to be so carefully made are no longer commanded by Dame Fashion as the only possible mode of dress. The one piece evening gown is no longer the only style, and in truth there are any number of extremely smart evening gowns now being made with skirt and waist separate. These are dressmakers who assert that only the separate skirt and waist should be made up, but this is too sweeping a command, for if the one piece effect is the more becoming then it should be chosen, and in consequence the modified Empire gown of last year, modified to be on the latest lines, is not to be really discarded by any means, and if dealt with gently and carefully will still be extremely smart. The sheath gown will require much more attention to be brought up to date, for more material will be needed to give the required width of skirt, and the waist must be more clearly defined, even when the material hangs from the trimming or folds of the waist.

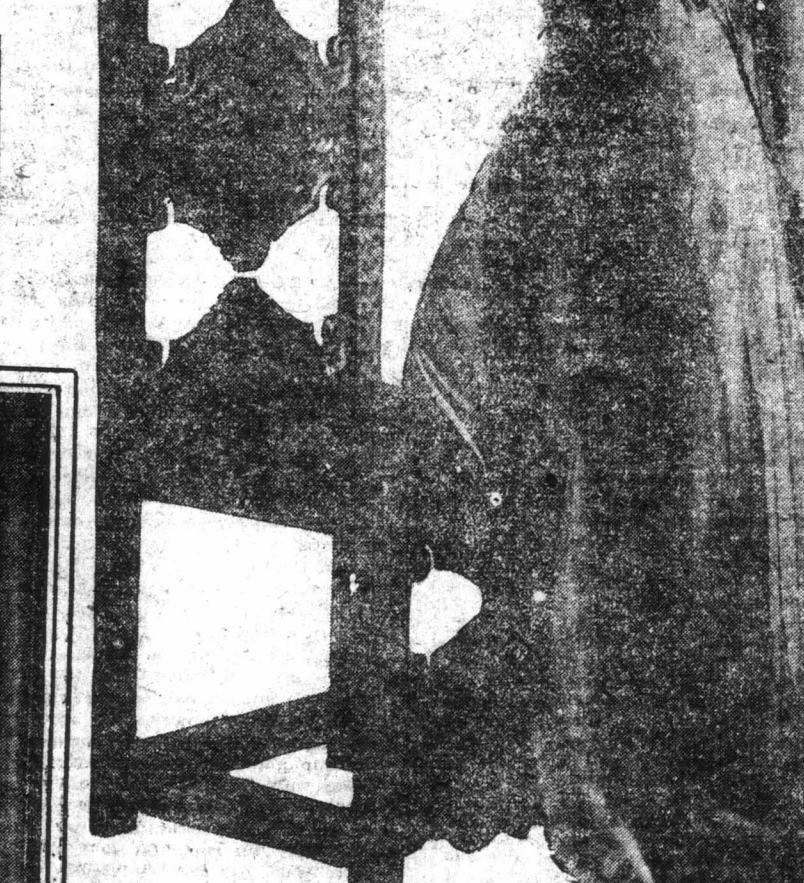
Once again is the long waist considered desirable, but in the strange subtlety of all modern dress the long waist line is more suggested than emphasized, for although as has been said, last year's lines are no longer in favor, the straight line, however by no means gone quite out of style, and the fashionable figure is still slender and narrow, an effect only possible with the straight draperies. Skirts of evening gowns are much wider and longer, with the train almost exaggeratedly long, while in front and at the sides the skirt must be long enough to more than touch the ground. The newest models are most graceful and effective, with their long sweeping trains, and in spite of their added width are so cleverly designed that they make the wearer look slender. Heavier materials are used than last season, while there are many old friends among the new designs, but with new names. In spite of looking heavier in weight and richer in quality these new fabrics are singularly soft and pliable, so that they can be dealt with as weight charms and princess gowns has had such a wonderful and long lived popularity.

THE double box pleats in the back, about two inches apart, are to be noted in the newest evening gowns. These can be fastened upon the waist just under the shaped folds or the fast trimmings of the waist, or can start from the natural waist line, hidden under the skirt, or again the draped folds of the waist, in this instance draped to give the long waisted effect. The lining of the skirt receives careful attention, and many of the newest skirts are lined throughout with chiffon or soft silk, the lining often attached, not in a separate, and always of some contrasting color. A most effective model in black satin is lined throughout with rose pink. The waist is cut exaggeratedly low and filled in to the customary line of the low cut waist, first with crossed folds of rose pink satin and above the satin folds of tulle the same shade of pink. In this pink foundation, or just below it, as is the more becoming, are bands of open work jet passementerie. A large ornament of the most brilliant rhinestones of the most brilliant cut and jet directly in the front of the waist serves to lighten the perhaps too dull black. The sleeves, of pink tulle, fit close to the arm and do not reach to the elbow. A most charming evening gown of pale pink satin has for its only trimming a inch wide border around the top of the waist in pink silk and silver cord. The same is on the sleeves and, if so desired, when cost is not considered, enables the hem of the skirt. Nothing can be simpler, yet the gown is easily distinguished from among many others by its distinctive individuality and simplicity.

ANOTHER of the new models displays a entirely new style. The long skirt is of bright blue satin, fitted to the figure without being in the least exaggeratedly tight, is cut to give a high waisted line, but with the line pointed back and front and outlined with a hand of heavy silk embroidery.

GOWNS OF TWO MATERIALS.

RECENTLY this would seem to show the use of an equal quantity of two kinds of materials in one gown. In one such design the under part of the gown is of plain woolen material, the forming the double skirt, having a pointed drape reaching to the knees in front and gathered in the back with a long tie. Over this is an upper garment of plain cashmere, which forms the front and



Black Mousseline de Soie Over Orange Satin. Maison Rouff. Photo Copyright by Reutlinger, Exclusive Copyright New York Herald.



White Voile de Soie Gown with Gold Embroidery. Photo Copyright by Reutlinger, Exclusive Copyright New York Herald.



Mauve Voile de Soie Embroidered with Gold Flowers. Photo Copyright by Reutlinger, Exclusive Copyright New York Herald.



Embroidered Satin Gown. Maison Riva. Photo Copyright by Reutlinger, Exclusive Copyright New York Herald.



Gown of White Tulle and Lace. Photo Copyright by Reutlinger, Exclusive Copyright New York Herald.

Fashion Details Every Woman Should Know

USUALLY the same princess as applied to a gown carries with it the idea of a severely plain garment without fold or pleat from neck to hem, but the new fashions pay no attention to the limitations of classic costume. Instead they seem to be engaged in violating every law which heretofore obtained in women's garments. In figure 1 the costume shown has certainly the general effect of a princess gown, and yet it is placed in a number of places, so much so, in fact, a very small portion of the surface is plain. Some suggestion of that moire garment known as the costume of the "moyen age" is in it. The model is most becoming to a slender person, developed in soft cloth, and is almost any one if reproduced in cashmere or pongee.



FIG. 1.—ODD COMBINATION OF PLEATS AND THE PRINCESS.

son, developed in soft cloth, and is almost any one if reproduced in cashmere or pongee.

CHARMINGLY becoming to the youthful figure is the costume shown in illustration No. 2, with its sleeveless coat trimmed with braid. The original model was in light weight satin finished cloth, in one of the attractive reds now so fashionable. The costume consists of a very simple gown fitting the figure like a princess but having a tucked yoke fairly deep in front and very deep at the sides, over which is worn the graceful sleeveless jacket. The sleeves of the gown are long and close fitting and tucked horizontally. They are of the cloth of which the costume is made, and are also the tucked side pieces of the bodice, but the chemise is of chiffon cloth of the same shade. The coat is trimmed with braid to simulate a long shawl collar, with points

of the skirt, the lower part of the bodice and the upper part of the sleeves. A gown of plain cloth which in design is a perfectly plain princess is trimmed with a surplus drapery of plaid material fringed ends

extending over the shoulders. Both the shoulder points and the points at the



FIG. 2.—SLEEVELESS COAT TRIMMED WITH BRAID.

waist are finished with braid, ornament and long tassels.

OR a beautiful and smart costume of serge or similar material, an attractive new design is shown in figure 3. The original model was of dark blue serge with a shawl collar and ends of black satin. The design is unique among the season's styles for serge suits in that it has no visible trimmings, the pleat



FIG. 3.—SERGE WITH THREE-QUARTER COAT, BEING SUPPLIED BY STITCHING. In light and unusual colors of serge or cheviot this costume, because of its extreme simplicity, would be even more effective. Much use of the light weight now so popular in this style, and especially in one so attractive new red.

both on the back and front of the bodice a full grille of plaid and a skirt draped which extends from the belt, widens out, and is tied at the back with enormous fringed ends.