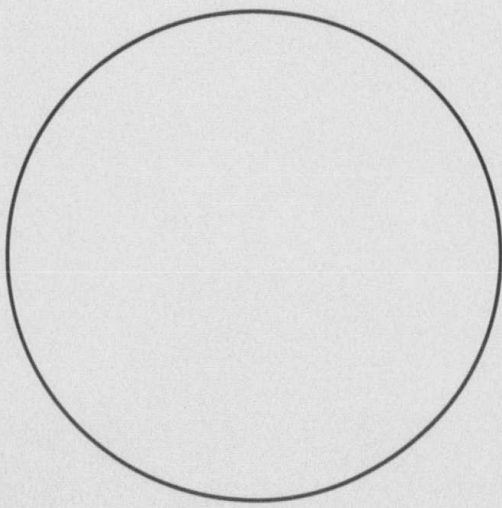


IMAGE EVALUATION  
TEST TARGET (MT-2)



POINT  
SIZE

4 Z35g 1j67 Y0rj Z06k  
6 Hq47j W9pa9 A7o7q Ge92  
8 Su1xi 33q7n Oelvf 4ef8k

10 2xbiy Gmn0c  
Y5a5o E1t9g

12 7n34a K2b8t  
D6fmh 9ss9d

14 Wcuzl L1cdg  
6Y3sl Okjdg

FUTURA

NEWS GOTHIC

14 K2b8t Okjdg  
4ef8k Gmn0c

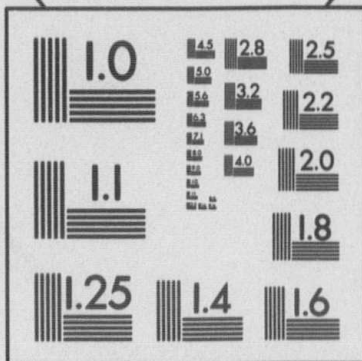
12 Zlo6x Ge92  
7n34a 6Y3sl

10 Y0r8j A7o7q  
Oelvf 2xbiy

8 9ss9d L1cdg  
33q7n E1t9g

6 Z35lg Hq47j Su1xi Y5a5o  
4 D6fmh Wcuzl 1j67 W9pa9

POINT  
SIZE



4 Jfivo Arakd Ouh9 Gnhc BkzIP

6 8iizz Wo8nk C6Jfm Zm79a

8 Tlwh2 zh9oz bun.Yr Dm5z5

10 KP7Yc Rho9t Umkh9 Ecafd

C6Jfm Zm79a 3s431 iskrY I26FRKM EB7AU FUDWM B00NF

Oz7h9B5e1P Wo8nk 8tizxI4C9E83 BI8AJ Z7QYI OKJDQ

POINT

SERIF (BASKERVILLE)

SIZE SANS SERIF (MICROFONT)

SHOULD MEASURE .25" AT REDUCTION

12x

16x

20x

24x

28x

30x

PHOTOGRAPHIC SCIENCES CORPORATION

770 BASKET ROAD  
P.O. BOX 338  
WEBSTER, NEW YORK 14580  
(716) 265-1600