

Lend a helping hand - or two

Over four hundred people contribute their time and talents to the efficient operation of CHIMO. The volunteers are the core of CHIMO. They are a community service run by members of the community for the

benefit of the community. Approximately one hundred and twenty-five people serve as telephone volunteers at CHIMO. They have the support and encouragement of well over two hundred and fifty people who act

in their professional capacity (resource volunteers) or who supply practical assistance (practical aid volunteers) in an emergency situation until a caller's friends, family, or an established agency can respond.

The people who serve in their professional capacity are doctors, lawyers, social workers, counsellors, clergy, the list is endless. Initial contact is made by the telephone volunteer who often simply passes on the professional advice. If warranted, and with the consent of both parties, the caller and the professional resource person are put in direct contact with one another.

These services are all offered on a volunteer basis in cases of real need and where established agencies are unable to assist.

Persons who are willing to supply services for a fee, such as babysitting, housekeeping, snow shovellers, often call and leave their names at CHIMO. Volunteers will supply callers who heed such services with the information on the understanding that CHIMO is,

CHIMO resources

Following is a list of resources available to CHIMO:

- | | | | |
|---|---|--|---|
| <ol style="list-style-type: none"> 1. Babysitters (emergency) 2. Car Repairs (emergency) 3. Counselling (both professional and non-professional) <ol style="list-style-type: none"> a. Adolescent b. Alcohol c. Drugs d. Family e. Financial (budgeting) f. Food Marketing g. Handicapped h. Parent/Child i. Personal j. Physical Health k. Pre-marital l. Religious m. Youth 4. Hospital Sitters (fee and no-fee) *5. Housework (emergency) 6. Interpreters: | <ol style="list-style-type: none"> a. Arabic b. Chinese c. Dutch d. French e. German f. Hungarian g. Spanish | <ol style="list-style-type: none"> 7. Legal Advice (emergency) 8. Locating needed articles 9. Meals (emergency) 10. Miscellaneous: <ol style="list-style-type: none"> a. Anything reasonable b. Snow shovelling 11. Miscellaneous Experts: <ol style="list-style-type: none"> a. Anthropologist b. Cancer Society Service Worker c. Deaf Sign Language d. Home Economist e. Language Tutor f. Librarian | <ol style="list-style-type: none"> g. Occupational & Physical Therapist h. Remedial Reading Tutor 12. Nurses 13. Office Help 14. Psychologists 15. Read to the Blind *16. Sit with Elderly 17. Talk to Lonely 18. Telephone Shut-ins 19. Transportation (emergency) 20. Visiting |
|---|---|--|---|

Practical aid volunteers will respond to emergency situations on a personal level by acting as drivers, babysitters, or visitors, or who are prepared to provide meals, accommodation, read to the blind, again the list is endless.

in such cases, simply acting as an exchange agent and cannot guarantee the quality of service, nor be responsible for the people providing same because they are not, in the majority of cases, CHIMO volunteers.

All about music and stuff

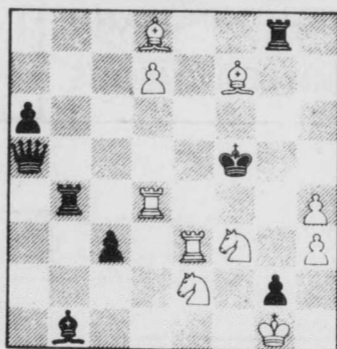
Continued from page 10

Sept 21 at 7:30 p.m., at 358 Church Street, which is two minutes or less on foot from the bottom of the campus.

activities can be obtained from Barb Hughes or Steve Hopper at 454-1422, Ron Lees at 454-6378, or Marc Lulham at 454-4657. Have a good winter.

system) is open all night. The Sunday night crowd there is a quietly attentive one compared to rowdier moments at the Chestnut, so there is no justification for stage fright.

There will be a general meeting of people involved (or wishing to get involved) with the Folk Collective this coming Thursday.



By FRED MCKIM

The UNB Chess Club has resumed their meetings for the school year. Meetings are again planned for Tuesday nights, SUB, Room 26 at 6 p.m.

During the year the chess club holds two weekend tournaments, the UNB Fall Open in Nov. and UNB Winter Open in Feb. These tournaments will have two sections, one for the stronger players, the other for the novice or beginner.

The highlight of the year is the Atlantic Intercollegiate Chess Championship. Last year UNB came 2nd.

We welcome back any returning players and would especially like to see a lot of new players this year.

Chess Problem
White to play and mate in 2 moves.
Solution will be given next week.

WANTED: PART-TIME TYPESETTER

Needed Wednesday nights-6:30-12.00

Minimum: 40 WPM on an electric typewriter

Contact Kathy Westman at 453-4983
or drop into Rm. 35, SUB

Make the Good Times right with . . .

2 locations to serve you

254 King St.
455-5206

or

Prospect & Smythe
454-9694

Take out & delivery services at both locations.

Restaurant facilities at Prospect

Welcome Students

Visit the Capital for all your needs in clothings and footwear a real 'get-acquainted' offer

UNB leather jackets

made of the best quality leather nylon lined for extra wear, plus a 'jumbo' lightning zipper created with 'University of New Brunswick on the back

none better at any price

\$119.50

tough wearing

nylon jackets

...With a thermo-lining and a 'jumbo' lightning lightning zipper created with 'University of New Brunswick' on the back

PRICED AT

\$54.98

We have loads of crests for different faculties and houses, and a complete stock of Grab Kodiak Boots and Men's Pro-Kod and North Star sneakers

10% student discount on all goods except the above jackets

Capital Men's Wear Ltd. 362 Queen St. 455-7062