

Shuttle experiment

National Research Council needs your space-junk.

Students and faculty members in all disciplines at Canadian Universities are invited to participate in the council's "Getaway Special" competition. This is your opportunity to design a scientific experiment for a space shuttle mission in the first half of 1986.

The selection procedure will favour proposals which include innovative approaches, have the potential to succeed, and to generate new scientific data, and involve team effort with student participation.

Deadline for submissions is February 15, 1984.

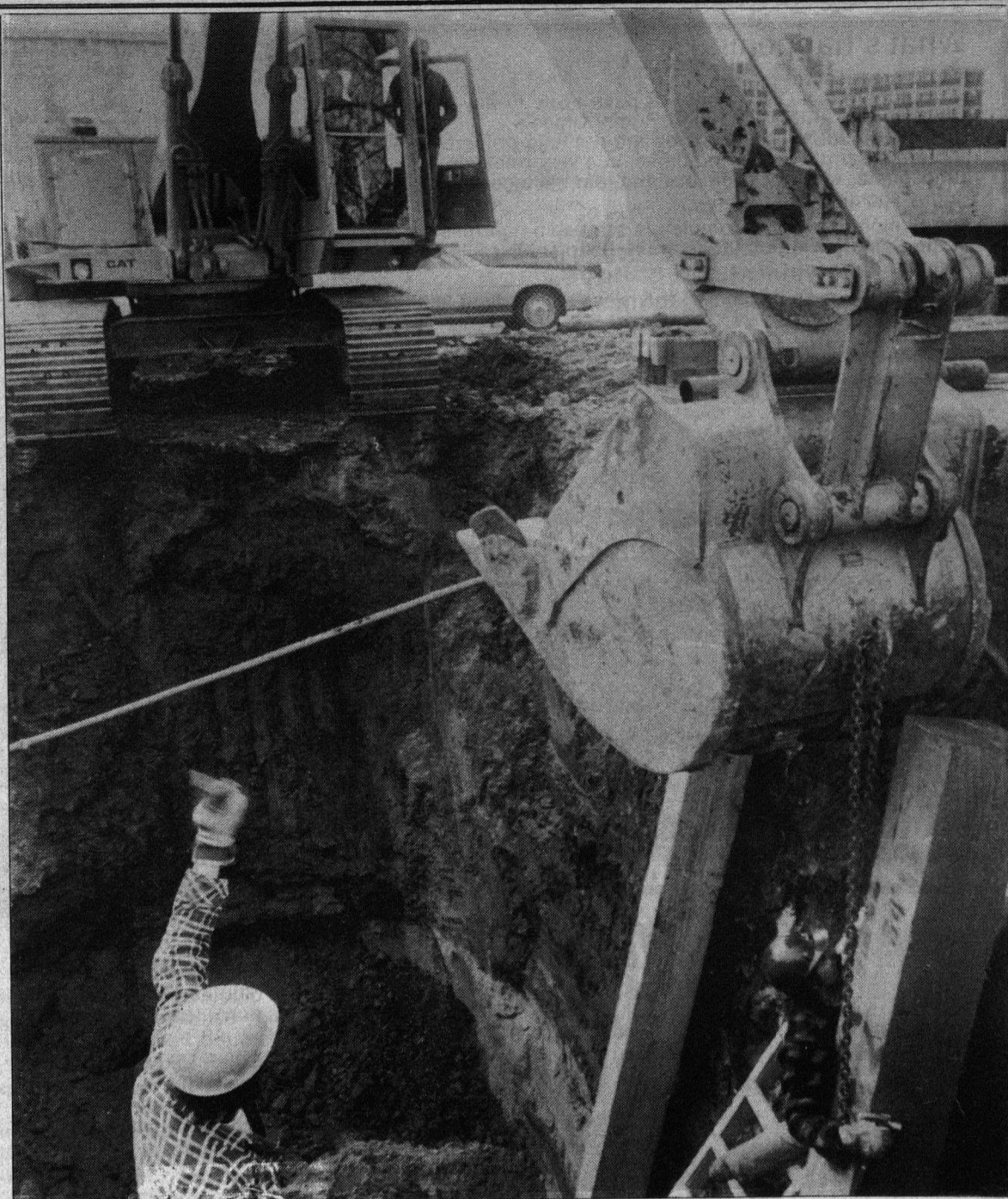
The winner will be expected to supply the flight experiment (i.e. samples or apparatus) within 18 months. NRC will assist with the development of the experiment and provide testing, integration, electrical services, thermal control, launch services, travel and liaison with NASA.

The maximum weight of the material is 90 kg. It will be placed in a cylindrical container and attached inside the Shuttle's cargo bay. The cylinder will be 50 cm in diameter and can be 35 or 70 cm long. It can be pressurized or vented, and have either a solid cover, optical window, or opening lid.

The experiment must not pose a health or safety hazard, and must have its own power, data recording, and control. Astronauts can command only on-off functions.

The Natural Sciences and Engineering Research Council will participate in the selection of the winner, who will be announced May 1, 1984.

For more information, and application forms, write on University letterhead to Canada Centre for Space Science, Room 1016, National Research Council, Montreal Road, Ottawa, Ontario, K1A 0R6.



Several service tunnels will be constructed under 87th Avenue over the next three months so that the people who set up detour signs will have something to do. The tunnels will join the Butterdome with Lister Hall. They were supposed to be built at the same time as the Butterdome but were delayed because of the Universiade Games.

Director ratified

by Ken Lenz

Nikiwe Mbolekwa was ratified as the new Student Orientation Services (SORSE) director at the last students' council meeting.

SORSE, an SU funded service club, helps students to prepare timetables during the first week of classes as well as orienting them to the University throughout the year.

As well, SORSE acts as an information and referral service for students - especially those with academic problems.

Mbolekwa is a transfer-student from McGill University in Montreal, entering into her fourth

and final year of Political Science at the U of A.

She likes the principal of SORSE saying, "The fundamentals are excellent, I don't see the focus changing."

Mbolekwa would like to see SORSE achieve a higher profile.

"This is important because the people who we deal with are very positive."

Asked whether recent confrontations with the SU would be a problem in the upcoming year, Mbolekwa replied, "I am fully expecting positive relations and have no reason to expect otherwise."

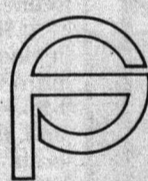
SOUTHERN COMFORT

The Grand Old Drink of the South



Any way you like it—
on the rocks, with
orange juice or
your favourite mix—
Southern Comfort is
the one and only!

Southern Comfort tastes downright friendly.



U of A PRINTING SERVICES

WORD PROCESSING SERVICE

AT

EDUCATION BUILDING · B-105

- TYPE YOUR OWN PAPERS & DOCUMENTS
- MODERN, FULL FEATURE WORD PROCESSORS
Capable of instant correcting & updating
of documents.
- HIGH QUALITY LETTER PRINTERS
- PRE BOOK AT \$5.00 AN HOUR
- HOURS - 8:00 AM - 10:00 P.M. - MON. - FRI.
9:00 A.M. - 4:00 P.M. · SAT. - UNTIL FURTHER NOTICE

LIMITED TRAINING SESSIONS AVAILABLE

CONTACT CENTER at EDUCATION-B105-432-3754

This week's Gateway staff meeting will be held on Wednesday at 4:00 pm. in room 282 SUB. The next Gateway appears on Tuesday, November 15 due to university classes being cancelled on Remembrance Day. Regular Thursday staff meetings resume next week. Regular twice-weekly Gateway returns as well.