

MATINEE RACING TODAY; LARGE FIELD OF ENTRERS

With the speedway cleared in good style on the river at Millville, and a large field of horses, the matinee races under the auspices of the St. John Matinee Driving Club promises to be one great afternoon for all the lovers of speed, and it is expected that the crowd to attend will be the largest ever seen at any matinee races held in this section of the country. A carload of horses numbering a dozen or more of the fastest in the Celestial city were shipped for St. John yesterday afternoon and through the kindness of Kenneth Donohue the visiting horses will be well looked after in his stables on Union street.

The Frederick fans are very much interested in the matinee racing of fifty or sixty will arrive in the city this morning to be present at the track, with the hopes of witnessing their horses capturing the events from the St. John horses.

The interest in the matinee racing for the past two winters has been keen and where it is a case of the horses from one association racing against another, it gives the public a race sport free, while on the other hand it brings the owners of good horses together in a most friendly manner. The owners of horses with any speed at all enjoy a race and while these races are not for any large stakes there is the same ambition to win as there would be if the stakes hung up were of the largest kind.

There will be no less than seven events this afternoon, and this excellent programme should be hailed with delight by all and should give a whole afternoon's sport.

The committee in charge of the meet finished making out their programme yesterday, and it shows that there will be thirty-three horses to start in the events, and Frederick horses will start in all the events with the exception of the last race, which will be for three local horses.

The track is on the Kennebecasis directly in front of the Royal Canadian Yacht Club house and this gives the spectators an excellent chance of witnessing the races without crowding near the lines.

Hugh O'Neill, the well known horseman of Frederick, arrived in the city yesterday and will be the starter George Howie of Frederick and John A. Barry of this city, will be the judges. Harry Adams of Frederick and John O'Neill of St. John, timers; Harry M. Blair of Frederick, and John Jackson of St. John, judges, and Edward Mooney, St. John, marshal.

The races will commence at two o'clock sharp, and the visiting horsemen are requested to be at the head of King street at 1.15 o'clock to take the sleigh for the track.

This evening the visiting horsemen will be entertained at a smoke talk at Bond's restaurant.

The following is the programme of the events with the names of the horses entered:

Class A Pace.

Prince Baron, T. V. Monahan, Frederick.
Ora Delmarch, H. J. Morgan, Frederick.
Doctor Hoegg, J. Prescott, Sussex.
Harry Fearless, Thos. Hayes, St. John.
Addison, Louis King, St. John.
Lena B., E. Charters, St. John.

Class B Trot.

Star Todd, Roy Smith, Frederick.
Royal Pandect, Jas. Flood, St. John.
Black Sultan, E. Charters, St. John.
Parkola, H. Tibbets, Fairville.
Lina Belle, Thos. Hayes, St. John.

Class C Pace.

Harry Mack, Thos. Raymond, Frederick.
McCallum, Wm. Brickley, St. John.
Harry H., W. P. Keenan, Frederick.
Arthur B., W. Reid, St. John.

Class D Trot.

Charlie Thompson, H. B. Kitchen, Frederick.
Kate F., Wm. Forbes, St. John.
Lady Dillon, Wm. Earle, St. John.
Prodical Prince, Jas. Brickley, St. John.
Beauty, John Davidson, St. John.
Mack, Wm. Brickley, St. John.

NEW BRUNSWICK COUPLE MARRIED IN CALGARY.

Calgary, Alta., Jan. 25.—A very pretty but quiet wedding was solemnized at the home of Mr. and Mrs. James Hawkes, brother of the groom, at high noon on Wednesday, Jan. 22, when Beulah Rose Keith, daughter of Mr. and Mrs. Joshua M. Keith, Havlock, N. B., and Herman Hawkes, formerly of Sussex, N. B., but for the past five or six years resident of this city, were united in marriage by the Rev. Alexander Torrie of the Calgary Baptist church. Among those present was Wm. J. Keith, brother of the bride. The bride was beautifully gowned in white nylon over satin with pearl and crystal trimmings. Immediately after the ceremony a sumptuous dinner was served.

Mr. and Mrs. Hawkes left on the afternoon train for Edmonton accompanied by the best wishes of a host of friends. Mrs. Hawkes travelled in a handsome suit of tan whipcord and hat of white beaver with plumes.

The happy couple upon their return will reside in Park View, Calgary.

SUPREME COURT.

In the Supreme Court, writs have been issued in the suits of Ella and A. H. Brown vs. George Bartlett, Southampton, declaratory claiming \$3,115 damages for negligence; and in the case of the Bishop of Frederick vs. Harvey Mills and Kingarth Cook, for the recovery of land.

For Sale

The Schooner CALABRIA, of 451 tons Register, and Schooner ORIOLE of 134 Tons Register. Require of J. E. P. L. & Co. and 63 Water St., St. John, N. B.

DOMINION ATLANTIC RAILWAY

St. John leaves Reed's Point wharf daily at 7 a. m., connecting Digby with trains East and West, turning arrives at 5.30 p. m., Sunday excepted.

A. G. CURRIE, Agent.

LIPTON CUP RACE ON THE PACIFIC

CLASS E.

1st Division Pacers.

Fusay Chimes, J. E. Sullivan, Frederick.
Look Again, F. D. Colter, Frederick.
Lord Minto, Arthur Connors, St. John.
Buchanan, Wm. Kiernan, St. John.

2nd Division.

Jerico Jr., Thos. Hughes, Frederick.
Shadeland Fanetta, P. W. Watson, Frederick.
Whistler, Ralph Gunter, Frederick.
Granite, Wm. Brickley, St. John.
Wait a Minute, John Glynn, St. John.

3rd Division Local.

May Chimes, Wm. Kiernan, St. John.
Maynard, Geo. Chamberlain, St. John.
Lady Parkside, H. Short, St. John.
Sleighs will run from Scott's Corner to Millville to convey all who wish to attend the races.

LEAGUE BOWLING ON BLACK'S

There was one match played on Black's alleys last night and that was in the City League, where the Marketmen took the four points from the Insurance team. The following is the individual scores:

Insurance.			
Gilmour	.90	96	80
Armstrong	.80	74	72
V. Johnston	.80	80	77
Cosman	.80	84	70
B. Johnston	.80	76	85
	420	430	384
Marketmen.			
Downey	.88	89	90
W. McGivern	.88	81	82
Magee	.87	79	84
J. McGivern	.84	103	75
Slocum	.77	100	76
	424	452	397

Tonight's Games.

Commercial League—T. McAvity and Sons vs. C. F. R. Freight.

CHATHAM WON FROM VICTORIAS

Chatham, Feb. 21.—Chatham won from the Campbellton Victorias here tonight by the close score of 4 to 3. The game was very fast all through, and Chatham had to exert themselves to the limit to win out. The first half ended in Chatham's favor, 3 to 1, but in the second half Campbellton had the best of the play and got in two goals, while Chatham's winning tally was made on an end to end run by Watling.

The lineup was:
Chatham Goal. Campbellton
Titus Point. McLean
Watling Cover Point. Delaney
Currie Cover Point. Wallace

A WEAK, ACHING BACK Caused Her Much Misery. Kept Her From Sleeping Nights.

Weak back is caused by weak kidneys, and on the first approach or evidence of kidney trouble Doan's Kidney Pills should be used, and serious trouble avoided.

Doan's Kidney Pills go right to the seat of the trouble, cure the weak aching back, and prevent any further complications arising.

Mrs. W. R. Hodge, Fielding, Sask., writes:—"A few lines highly recommending Doan's Kidney Pills. For this last year I have been troubled very much with nasty sick headaches, and a weak aching back which caused me much misery, for I could not work and had no ambition for anything. My kidneys were very badly out of order, and kept me from sleeping at nights. I tried many kinds of pills and medicines, but it seemed almost in vain. I began to give up in despair of ever being well and strong again, when a kind neighbor advised me to try Doan's Kidney Pills, which I did, and am thankful for the relief I obtained from them, for now I am never troubled with a sore back or sick headaches. I will always say Doan's Kidney Pills for mine and can highly recommend them to any sufferer."

Price, 50 cents per box, 3 boxes for \$1.25, at all dealers, or mailed direct on receipt of price by The T. Milburn Co., Limited, Toronto.

When ordering direct, specify "Doan's."

ARE YOU AS WELL AS YOU SHOULD BE?

The body derives its nourishment from the blood. When the blood is weak and "watery" it cannot supply the body with sufficient nourishment. Therefore people suffering from Anaemia have pale, transparent skins—have constant worry, overwork, illness or any other cause—when you feel listless and low-spirited, "Wincarnis" will promptly invigorate and strengthen you. Directly you have taken a wineglassful of "Wincarnis" you will feel a delicious stimulating effect. This is Sleeplessness at night will be composed and the high-toned brain and ensure an interrupted and sweetly refreshing night's rest. And while you are asleep "Wincarnis" is busy storing up new strength, new vigour and new life.

At night will be composed and the high-toned brain and ensure an interrupted and sweetly refreshing night's rest. And while you are asleep "Wincarnis" is busy storing up new strength, new vigour and new life.

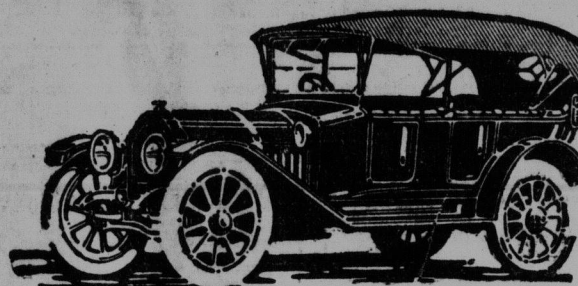
At night will be composed and the high-toned brain and ensure an interrupted and sweetly refreshing night's rest. And while you are asleep "Wincarnis" is busy storing up new strength, new vigour and new life.

At night will be composed and the high-toned brain and ensure an interrupted and sweetly refreshing night's rest. And while you are asleep "Wincarnis" is busy storing up new strength, new vigour and new life.

"Wincarnis" can be obtained from all leading Stores, Chemists and Wine Merchants.

Tudhope

"The Car Ahead"



Tudhope "648", \$2,500 f.o.b. Orillia
Electric Lighting and Cranking

Save the Duty

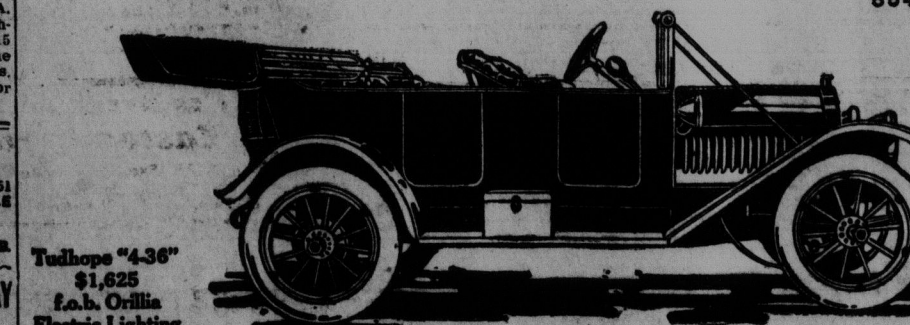
Men too often judge a car by its price. Having decided to buy a \$2,000 or \$2,200 car, they are not interested in cars that sell for \$1,625. When you choose your car remember this. Do not class the Tudhope 4-36 as a \$1,625 car. The Tudhope cars are built in Canada. They do not carry the 35% duty charge which is added to the price of imported cars or cars assembled from imported parts—a charge that increases the price without adding to value. The Tudhope cars can be bought at the duty-saving price.

The Tudhope cars have that massive and well-balanced appearance that marks the perfect car. They show care and skill in the details of body building, in upholstery, and in finish. The generous proportions—exceptional spring equipment, long wheel-base, big wheels; these are the things that bespeak comfort, freedom from rocking and jolting—a steady car. The accessories are well chosen: Gray & Davis Electric equipment; Extra Tire; small things, perhaps, but evidences of our study for thoroughness.

Ride in a Tudhope car. Feel the quiet throb of the powerful motor. This big silent machine is the product of a factory that takes pride in its output. The Motors, Gears, Axles are built with the exacting care that is essential for comfortable touring and dependable service over Canadian roads.

Catalogue comparison will give some indication of the extra value we build into Tudhope cars. Remember we save the duty. But to appreciate what Canadian building actually means you must see the cars.

The Tudhope Motor Co., Limited, Orillia, Canada



Tudhope "436"
\$1,625
f.o.b. Orillia
Electric Lighting

TUDHOPE MOTOR CO., LTD., 96 Charlotte Street, St. John.

RAILWAYS.

CANADIAN PACIFIC

AROUND THE WORLD

From Liverpool, June 18th
Full Particulars on Application.

SHORT ROUTE

MONTREAL

ALL RAIL ROUTE
St. John to Boston
Two Trains Every Week Day.

W. B. HOWARD, D. P. A., C. P. R.,
St. John, N. B.

INTERCOLONIAL RAILWAY

Fall and Winter Through Service

QUEBEC and MONTREAL
2 THROUGH 2
TRAINS 2

OCEAN LIMITED

LEAVES MONCTON, 14.20.
Connecting Train leave St. John at 11.20 daily except Sunday.

MARITIME EXPRESS

Connecting Train No. 134, leaves St. John 18.35 Daily, except Sunday.
Sleeping and Dining Car Service Unrivalled.

GEORGE CARVILL, City Ticket Agent
3 King Street.

THE INTERNATIONAL RAILWAY

Uniting Campbellton at the head of navigation on Bay Chaleur with the St. John River Valley at St. Leonard and connecting the Intercolonial and Canadian Pacific Railway systems.

Winter Time Table Summary

GOING WEST.
Express train leaves Campbellton daily (except Sunday) at 7.30 a. m. for St. Leonard and intermediate stations, due at St. Leonard at 12.20 p. m.

GOING EAST.
Express train leaves St. Leonard daily (except Sunday) at 5.00 p. m. after arrival of C. P. R. express from St. John, Vancouber etc., due at Campbellton at 10.00 p. m.

And in addition to above and to the ordinary freight trains, there is also a regular ACCOMMODATION TRAIN carrying passengers and freight running each way on alternate days as follows, viz. Going West—Leaves Campbellton at 8.00 a. m. for St. Leonard, and intermediate stations, Monday, Wednesday and Friday, due at St. Leonard at 4.20 p. m.

Going East—Leaves St. Leonard at 8.30 for Campbellton, etc., Tuesday, Thursday and Saturday, due at Campbellton at 4.30 p. m.

Governed by Atlantic Standard Time.
See local time tables and for full information regarding connections, apply to R. B. Humphrey, freight and passenger agent, 55 Canterbury street, St. John.

E. H. ANDERSON, Manager.
E. H. ANDREW, Traffic Mgr.
THOMAS MALCOLM, Gen. Mgr.,
Campbellton, N. B.

ALL THE WAY BY WATER

Eastern Steamship Corporation

International Line

WINTER FARES.
St. John to Boston\$4.50
St. John to Portland 4.00
State Room 1.00

Leave St. John 9 a. m. every Thursday for Eastport, Lubec, Portland and Boston.
Returning leave Central Wharf, Boston, Mondays, 9 a. m. and Portland, 5 p. m. for Lubec, Eastport and St. John.

Maine Steamship Line

Direct service between Portland and New York. Leave Franklin Wharf, Portland, Tues., Thurs. and Sat. 6.00 p. m. Fare \$3.00 each way.
City Ticket Office, 47 King St.
L. R. THOMPSON, W. M. G. LEE,
T. F. & P. A. Agent.

THE MARITIME STEAMSHIP CO. (Limited).

Commencing Feb. 7 and until further notice the gasoline boat, Page and other boats will run as follows:
Leave St. John, N. B. Tourist Wharf and Warehouse Co. on Saturday, 7.30 a. m. for St. Andrews, calling at Dipper Harbor, Beaver Harbor, Black's Harbor, Back Bay of Letete, Deer Island, Red Store, St. George. Returning leave St. Andrews Tuesday for St. John, calling at Letete or Back Bay, Black's Harbor, Beaver Harbor and Dipper Harbor. Tide and weather permitting.

Agent: THORNE WHARF & WAREHOUSE CO., St. John, N. B.
Phone 77, Manager, Lewis Connors, Black's Harbor, N. B.
This company will not be responsible for any debts contracted after this date without a written order from the company or Captain of the steamer.

STEAMSHIPS.

CANADIAN DOMINION

BUY YOUR PREPAID TICKETS NOW!

TO AND FROM ENGLAND AND SCANDINAVIA AND THE CONTINENT
CANADA, Feb. 22, TEUTONIC, March 1

Rates: Cabin (D) \$47.50 and \$50; Third Class \$31.25 and up according to destination.
SEASON 1913
Sailings now ready and lists open. Book for May, Fall and Winter Booklet. Book passages and buy tickets from local agents. Offices: Montreal, Portland, Halifax, Toronto.

Local Agents: W. H. C. Mackay, Wm. Thomson & Co., 7 Knight's Co., The Robert Reford Co. Limited.

ALLAN LINE

ROYAL MAIL Twin Screw and Turbine Steamers

ST. JOHN TO LIVERPOOL.
Granplan Dec. 12 Jan. 17
Virgilian Dec. 20 Feb. 25
Hesperian Dec. 28 Jan. 31
Coriscan Jan. 3 Feb. 14
Tunisian Jan. 24 Feb. 28

ST. JOHN TO HAVRE & LONDON.
Pomeranian Thursday, Jan. 9
Lake Erie Thursday, Feb. 6
Pomeranian Thursday, Feb. 6
Lake Erie Thursday, Feb. 6

For particulars regarding Freight or Passage, apply to
WM. THOMSON & CO., St. John,
H. & A. ALLAN, Montreal

CANADIAN PACIFIC EMPRESSES AND OTHER STEAMSHIPS

Liverpool Service

SAILINGS

FROM ST. JOHN, N. B.
EMPRESS OF BRITAIN, Feb. 21
EMPRESS OF IRELAND Mar. 7.

For Rates, Reservations, Plans, Literature, Tickets, Etc., Etc., Apply to
W. B. HOWARD, General Agent,
St. John, N. B.

ELDER-DEMPESTER LINE

NASSAU, CUBA, MEXICO SERVICE.

S. S. "SOKOTO" sailing from St. John about Feb. 23rd, for Nassau, Havana, Puerto, Mexico, Vera Cruz, Tampico and Progreso.

S. S. "NINIAN" sailing from St. John about Feb. 20th, for Cape Town, Port Elizabeth, East London, Durban and Delagoa Bay. Cold Storage accommodation on each vessel. Accommodation for a few cabin passengers. For freight and passenger rates and full particulars apply to
J. T. KNIGHT & CO., Agents,
ST. JOHN, N. B.

PICKFORD & BLACK LINE

ST. JOHN, N. B. to DEMERARA.
S. S. "Oruro" sails Feb. 8 for Bermuda, Montserrat, Dominica, St. Lucia, St. Vincent, Barbados, Trinidad, Demerara.

S. S. "Hafri" sails Feb. 23rd for Bermuda only.
For passage and freight apply to
WILLIAM THOMSON & CO.,
Agents, St. John, N. B.

MANCHESTER LINE

From Manchester.
Jan. 25 M. Commerce Feb. 15
Feb. 1 M. Importer Feb. 22
Feb. 8 M. Shipper Mar. 1
Feb. 15 M. Miller Mar. 8
Feb. 22 M. Inventor Mar. 15
Mar. 1 M. Corporation Mar. 22
Mar. 8 M. Commerce Mar. 29

Dates subject to change.
WM. THOMSON & CO., Agents

HEAD LINE

St. John to Belfast.
S.S. Irish-borne Head Mar. 10
S.S. Benigno Head Mar. 28
St. John to Dublin.
S.S. Ramore Head Mar. 5
S.S. Bray Head Mar. 30

Wm. Thomson & Co., Ltd.
AGENTS

FURNESS LINE

From London.
Jan. 30 Shenandoah Feb. 15
Feb. 5 Rappahannock Feb. 22
Feb. 19 Kanawha Mar. 11

Dates subject to change.
WILLIAM THOMSON & CO., Agents,
St. John, N. B.