

BRITISH COLUMBIA Fruit and Farm Magazine

A Monthly Journal Devoted to the Interests of the Man on the Land.

Vol. X.—No. 4

Vancouver, British Columbia

\$1.00 per year
in Advance

A Great Dairy Farm at Cloverdale

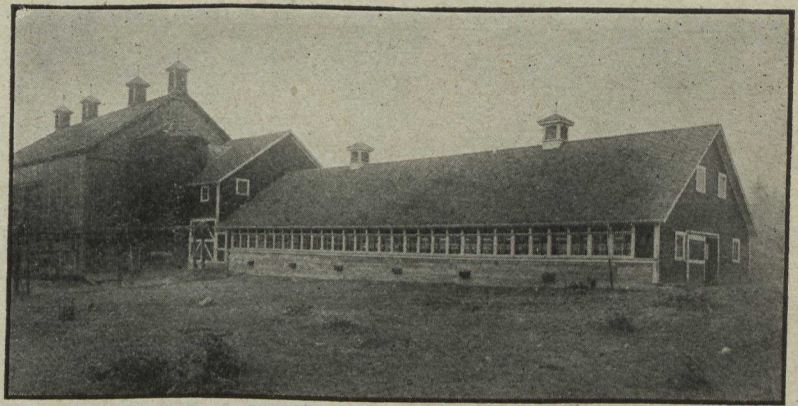
Valuable Stock Bred in B. C., Sold All Over The World.

(By BEVAN L. HUGH.)

As I alighted from the B. C. Electric train at Cloverdale I saw, three-quarters of a mile to the east, the large barn and silos belonging to Shannon Bros. nestling near the brow of the hill at the edge of the bush. I met Mr. Sam Shannon in the milk house and he was kind enough to show me over the extensive farm belonging to him-

Cloverdale and is valued by them at \$4000. She is the second high cow in record of performance work in Canada and is the first Ayrshire cow in this country to go over 20,000 pounds. "Lessnessock Comet" was imported by these progressive dairymen from Scotland and ranks as one of the five best Ayrshire bulls in Canada. "Royal

There are 15 horses altogether on the ranch. Of the feed produced on the 180 acres under cultivation, timothy yields 65 tons, vetches 35 tons, oats 45 tons and clover hay 45 tons. The silage consists of corn, vetches, oats and clover. For the benefit of farmers who are unable to obtain both vetches and clover, together for silage, either one will



COW BARN ON SHANNON RANCH

self and brothers. The whole farm consists of 226 acres, part of which is on the flats and part on the hill and incline, where the dwelling, barn, milk-house, silos, etc., are located. 180 acres are under cultivation, growing the food-stuffs used in connection with the feeding of the cattle. The cow stable is a concrete floored, well-lighted building adjoining the barn, 36 feet wide by 100 feet in length, and houses 65 head of cattle, 45 of which are pure bred Ayrshires and 20 grades. Three units, operated by electric power supplied by the B. C. Electric Co. are used for milking. Plank flooring is used where the cattle stand and Beattie standions in the place of halters, thus assuring perfect sanitation where the production of milk is concerned.

The stable is equipped with electric light throughout so no danger arises from the negligence of leaving a lantern where it could be knocked over. The two silos adjoining the barn have a total capacity of 250 tons, one holding 100 tons and the other 150 tons.

Of the 45 pure bred Ayrshires, "Grandview Rose" ranks first, her test showing that she produced 21,423 pounds of milk, giving 890 pounds of butter fat, which equals 1040 pounds of butter in 365 days. This cow was bred by Shannon Bros. at

Salute" of Tanglewild, is another valuable bull and the reader may fully realize the force of this statement when it is known that "Primrose" of Tanglewild, is his dam. "Primrose" is the ex-world's champion, producing 16,195 pounds of milk, giving 629 pound of butter fat. Several of the two-year-old heifers are remarkable animals at their age; "Grandview Grace" producing 8932 pounds of milk, giving 397 pounds of butter fat; "Grandview Blossom" producing 5122 pounds of milk, giving 348 pounds of butter fat; "Grandview Minnie" producing 8750 pounds of milk, giving 376 pounds of butter fat; "Grandview Edith" producing 7690 pounds of milk, giving 344 pounds of butter fat. These records were made under ordinary farm conditions of two milkings per day. "Spring Hill Live Wire" is the sire of the latter four heifers as well as of "Grandview Rose," the cow to go over 20,000 pounds. Of the "grade cattle" all are excellent producers of good type at the pail, one cow producing over 10,000 pounds of milk and another animal producing 11,000 pounds, the sire of which is "Spring Hill Live Wire."

Although Shannon Bros. centre their breeding in their Ayrshires yet they have some valuable pure bred Clydesdale horses, three of which are mares and five stallions.

do. Eighty-five gallons of milk are sent in to Vancouver and New Westminster daily in 350 bottles, both quarts and pints. After the cows have been milked the milk is cooled to 50 degrees Fah., bottled and set in cold water over night.

During the summer time ice is put in the boxes when the milk is sent to the cities. In the milk house is a steam turbine washer. The bottles after having been washed are put in with their milk pails and all the necessary bottling appliances in the sterilizing over and sterilized by steam heated by a furnace to 180 degrees. The floor of the milk house is concrete and after the milk operations are completed the floor is washed down with hot water and cold water.

The father of the four boys, Sam, George, Tom and John, came from Ontario and settled on the present farm which was in the forest, far from any railroad at that time. At present, the B. C. Electric and the Great Northern cut through the place. Mr. Shannon Sr. cleared a large part of the farm and broke the land for his sons, all of whom are native born. The younger generation commenced the breeding of fine cattle in 1909 and in that year laid the foundation of their present business in Ayrshire dairy cattle. Shannon brothers receive many or-