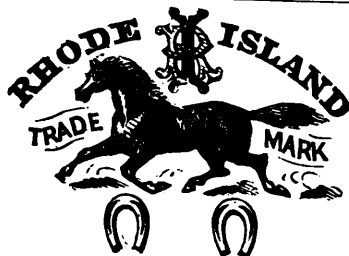


The Leading Manufacturers.



We are manufacturing above celebrated make of

## HORSE SHOES,

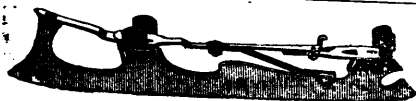
made from selected Wrought scrap Iron, which for general excellence, both as regards quality and uniformity, are unsurpassed.

The Rhode Island horse Shoes are preferred over all others. They are used entirely by the principal Farriers and Horse Railway Companies throughout the United States.

Orders solicited, which will be promptly executed.

We also manufacture every description of Nails, Tacks, Brads, &c. Railway and Pressed Spikes.

**PILLOW, HERSEY & CO., Montreal.**



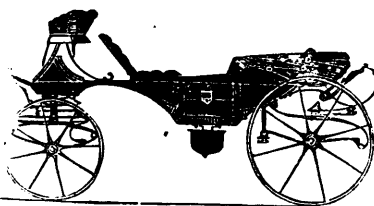
The STAR MANUFACTURING COMPANY'S  
**ACME CLUB SKATE** (FORBES' PATENT) Superior to every other Style.

Address—72 BEDFORD ROW, HALIFAX, N.S.

Aug. 12, 1876.

The Leading Manufacturers

**JOSEPH GILLOTT'S  
STEEL PENS.**  
Sold by all Dealers throughout the world.



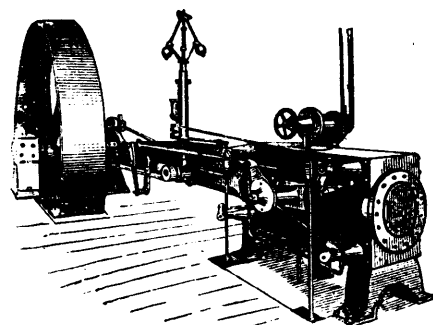
**JOHN WEBSTER,**

**CARRIAGE BUILDER,**

17, 19, 21 and 23 Alice Street, 3 doors west of Yonge St.

**TORONTO**

The Leading Manufacturers.



## CORLISS ENGINE.

For economy and mechanical construction, accessibility of all its parts, and regularity of speed. It has no rival. Send for catalogue. Manufactured by

**INGLES & HUNTER, Guelph.**

## CENTENNIAL MEDALS.

**ST. CATHARINES SAW WORK**

AWARDED THE

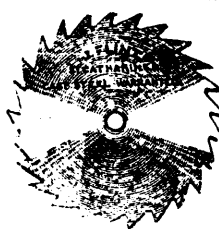
**ONLY GOLD MEDAL FOR SAWS AT PHILADELPHIA,**

**Also an INTERNATIONAL MEDAL,**

Fully establishing the well-known reputation of our goods. We manufacture all kinds of Saws at prices equally as low as the same quality of goods can be produced by any other manufacturer. Patronize home production, and keep your money in the country.

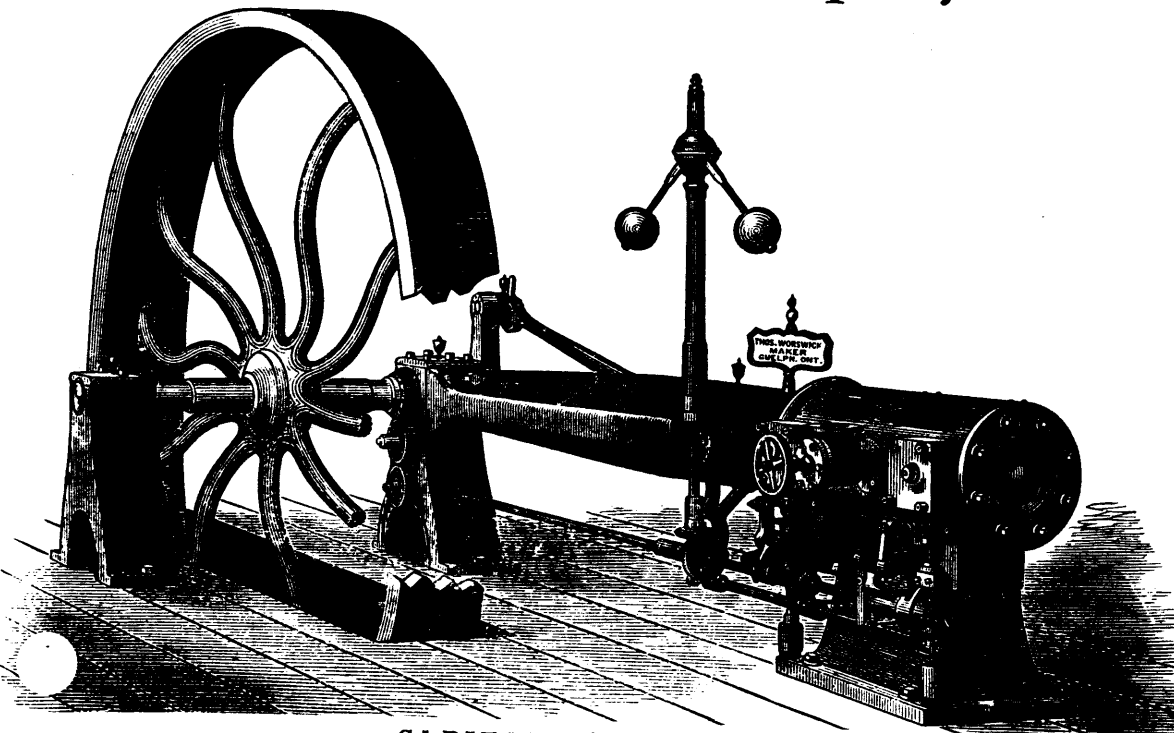
**R. H. SMITH & CO., Successors to J. Flint,**

**St. Catharines, Ontario.**



# The Worswick Engine Company. (Limited)

MANUFACTURERS OF  
**VARIABLE CUT-OFF ENGINES,**  
Upright and Horizontal Slide Valve Engines,



Machinists' Tools, Armstrong's Celebrated Heaters,  
WORSWICK'S PATENT FEED PUMP,  
Shafting, Pulleys, Hangers and General Machinery.

**CAPITAL, \$100,000.00.**

The Worswick Variable Cut-off Engine will give one Horse Power one hour on three pounds of good soft coal. Without doubt, these Engines are the most economical on Fuel now made. Send for circular.

**THE WORSWICK ENGINE CO., GUELPH, ONT.**