

Fig. 1.

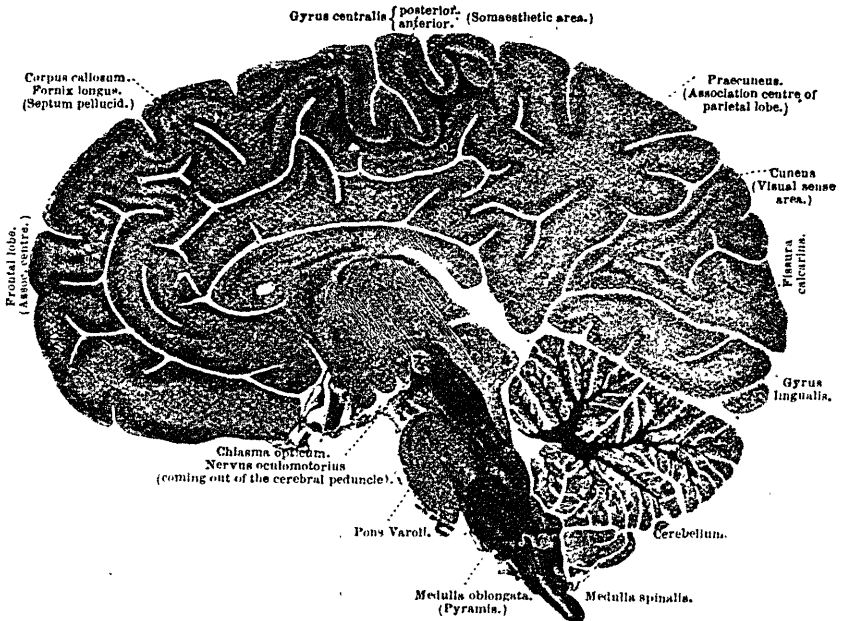


FIG. 1. Sagittal section through brain of a child one month old stained by the Weigert-Pal method. (After Flechsig.)

- a. Træna thalami optici (reflex path for the transference of olfactory impressions to the centres governing the movements of the head).
- b. White matter of septum pellucidum (in part running between the olfactory area and the gyrus hippocampi).
- c. Corpus callosum corresponding to the somæsthetic area.
- g. Superior } colliculus of corpore quadrigemina, cut near the middle line; here very
- h. Inferior } few medullated fibres are present; sections lateral to this show many.
- r. Red nucleus of the tegmentum: below this is seen the decussatio brachii conjunctivi.

[In this and succeeding plates I have translated Flechsig's terms as far as possible into the nomenclature of the Anatomical Society. For his sense centres and association-centres English terms which seemed most suitable have been employed. For the suggestion of the name "somæsthetic area" as a translation of the German *Körperfuhsphäre* I am indebted to Prof. B. L. G Idersleeve.—L.F.B.]