



A Common Error.

CHOCOLATE AND COCOA are by many supposed to be one and the same, ONLY that one is powder (the other more easily cooked) and the other is not

THIS IS WRONG - -

Take the Yolk from an Egg,
Take the Oil from the Olive,
WHAT IS LEFT?

A RESIDUE. So with COCOA.

—IN COMPARISON—
COCOA is skimmed milk.
CHOCOLATE pure cream.
C. A. CHOUILLOU,
12 and 14 St. John Street, - MONTREAL.

We should have a true
understanding of the
relative value of things.

Johnston's Fluid Beef.

—IS—

FIFTY TIMES

More nourishing than ordinary meat extract or home made beef tea and has no equal as a

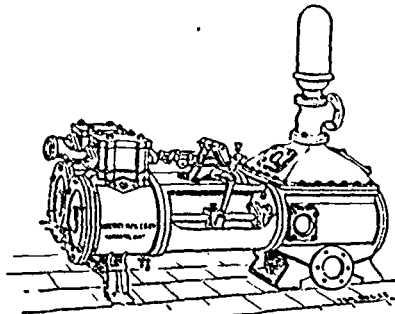
**STRENGTHENING
AND INVIGORATING
BEVERAGE.**

Prepared by
The Johnston Fluid Beef Co.,
Montreal.

St. Lawrence Hall

MONTREAL, - - P.Q.

Every Attention paid to Guests. First-class
in every Respect. Appointments Perfect.
Graduated Prices.



Northey Mfg. Co., Ltd.

Steam Pumps

FOR ALL PURPOSES.

—Sole Agents—

Waterous Engine Works Co., Ltd.
WINNIPEG, MANITOBA.

Western Milling Co., Ltd.

**STRONG BAKERS
AND
HUNGARIAN
PATENT FLOUR.**

Awarded medal and
Diploma Columbian
Exhibition, Chicago,
1893.

Manufacturers of Flour, Feed,
And dealers in Grain.
Best Hard Wheat only used.

REGINA, N.W.T.

T. Howard Wright.

A. C. Archibald.

Wright & Archibald,

(Successors to Wright & Jukes.)

GENERAL

Fire Insurance Agents.

GRAIN EXCHANGE BUILDING,

WINNIPEG, MANITOBA.

Andrew Allan, President. John McKechnie, Supt.
F. H. Brydges, Vice-President. W. E. Allan, Sec.-Treas

THE VULCAN IRON COMPANY,

OF MANITOBA LIMITED

MILL ROLLS GROUND & CORRUGATED.
Architectural Iron Work.

ENGINE AND BOILER WORKS,

GENERAL BLACKSMITHING.

POINT DOUGLAS AVE., WINNIPEG.

**Fasten
to this
Fact.**

The only train affording a full business day in Minneapolis and St. Paul and still reaching Chicago next morning in advance of all trains on other lines, is the **Atlantic and Southern Express** via **The North-Western Line**. It has Wagner Buffet Sleeper and Free Reclining Chair Car, and leaves Minneapolis, Daily except Sunday, 5.45 p.m.; St. Paul 6.25 p.m.; arriving Chicago 8.50 a.m.

Plant in your Memory

That the **North-Western Line** offers the best train service from Minneapolis and St. Paul to Sioux City, Omaha, Kansas City, Duluth and Superior, and is the only line running Pullman Sleepers to all these cities, besides affording first class day service. Try this line also to Ashland.

B. C. Milling & Feed Co.

MANUFACTURERS OF

ROLLED OATS, OAT MEAL, GRAHAM FLOUR
Split Peas and all kinds of Chop Feeds.

QUOTATIONS SOLICITED for Barley, Oats, Wheat and Peas for milling and feed purposes in sack or bulk car load lots. **BATCHELOR & QUINE,**
New Westminster Mills, B.C.

MAJOR & ELDRIDGE,

COMMISSION MERCHANTS,
Vancouver, - B.C.

Butter, Eggs, Cheese and Pork Products
FRESH EGGS WANTED.

Sole Agents for Vancouver, New Westminster and District for Leitch Bros. Celebrated Oak Lake Manitoba Flour.

The Brackman & Kerr Milling Co.,

LIMITED)

Oatmeal and Ground Feed Millers.

WHOLESALE DEALERS IN

FLOUR, FEED, GRAIN AND PRODUCE.

CORRESPONDENCE SOLICITED

VICTORIA, - - B.C.

J. & A. Clearihue,

COMMISSION MERCHANTS.

—DEALERS IN—

FRUITS AND ALL KINDS OF PRODUCE.

Special attention to consignments of Furs and Skins, Butter and Eggs.

Yates Street, VICTORIA, B.C.
P.O. BOX 536.

AGENTS St. Lawrence Oil Works, B.C.; D. Richards, Laundry Soap, Woodstock, Ontario; Teller, Bothwell Co., Montreal, Parisian Washing Blue.

We have a large cool warehouse with good facilities for handling Butter and Produce in quantities.

Consignments Received in all Lines. Correspondence Solicited.

Victoria Rice Mill

VICTORIA, B.C.

CHINA and JAPAN RICE,

RICE FLOUR AND BREWERS' RICE.

WHOLESALE TRADE ONLY.

HALL ROSS & CO. - Agents.

McMILLAN & HAMILTON,

COMMISSION MERCHANTS

—WHOLESALE DEALERS IN—

BUTTER, EGGS, FRUITS AND PRODUCE

A PERFECT SYSTEM OF

COLD STORAGE.

230 ABBOTT STREET, - VANCOUVER,
P.O. BOX NO. 296.