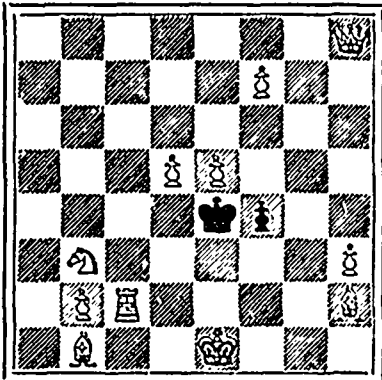


CHESS.

Problem 140: 1 R to B5, solved by C. W. L.

PROBLEM 142.
Illustrated London News.
Black 2 pieces.



White 11 pieces.
White to play and mate in two moves.

GAME 145.

- | WHITE. | BLACK. |
|-----------------|---------------------|
| Herr Laskor. | N. Macleod. |
| 1 P to K4 | P to K4 |
| 2 P to KB4 | P to Q3 |
| 3 Kt to KB3 | Kt to QB3 |
| 4 B to K5 | B to Q2 |
| 5 Kt to QB3 | Kt to KB3 |
| 6 Castles | B to K2 |
| 7 P to Q3 | Castles |
| 8 K to R sq | Kt to KR4 |
| 9 B takes Kt | P takes B |
| 10 Kt takes P | Kt to Kt6 ch |
| 11 P takes Kt | P takes Kt |
| 12 P takes P | B to Kt4 |
| 13 Q to B3 | B takes B |
| 14 QR takes B | Q to Kt4 |
| 15 Q to B4 | Q to R4 ch |
| 16 K to Kt sq | Q to KR sq |
| 17 K to B2 | P to KB4 |
| 18 K to Kt sq | P takes P |
| 19 Q takes P | R takes P |
| 20 B takes R ch | K takes R |
| 21 R to B sq ch | K to Kt sq |
| 22 Q to B4 | P to KR3 |
| 23 Kt to K4 | R to KB4 |
| 24 P to K Kt4 | Q takes P! |
| 25 Q takes Q | R takes R ch |
| 26 K takes R | B takes Q |
| 27 K to B2 | K to B2 |
| 28 K to K3 | P to Kt4 |
| 29 K to Q4 | K to K3 |
| 30 K to B5 | B to B4 |
| 31 K to Kt3 | K to K4 |
| 32 Ktks P | B to K3 |
| 33 P to R4 | B to Q4 ch |
| 34 K takes P | B takes P |
| 35 P to Kt4 | K to B5 |
| 36 Kt to R5 ch | K to K6 |
| 37 P to Kt5 | B to B6 |
| 38 Kt to Kt7 | P to KR4 |
| 39 P to R5 | P to R5 |
| 40 P to Kt6 | P takes P |
| 41 P takes P | P to R6 |
| 42 Kt to R5 | P to R7 |
| 43 Kt to Kt3 | K to B7 |
| 44 Kt to K4 ch | B takes Kt |
| 45 P takes B | P to R8 queens |
| 46 P to Kt7 | Q to R7 ch |
| 47 K to B8 | Q to R sq ch |
| 48 K to B7 | Q to Kt2 ch |
| 49 K to B8 | Q to B sq ch |
| 50 K to B7 | Q to QB4 ch |
| 51 K to Q8 | Q to Q3 ch |
| 52 K to B8 | Q to QB3 ch |
| 53 K to Kt8 | P to Kt5 |
| 54 P to B4 | P to Kt6 |
| 55 P to B5 | P to Kt7 |
| 56 K to R7 | P to Kt8 queens |
| 57 P to K5 | Q to R8 ch |
| 58 R to Kt8 | Q to K sq ch |
| 59 K to B7 | Q to R4 ch |
| 60 K to Q6 | Q(R4) to Q sq mate. |

PARSONS



PILLS
Make New Rich Blood
"Best Liver Pill Made."

They positively cure SICK HEADACHE and PLEASANTNESS, all Liver and Bowel Complaints. In Glass Vials Thirty in a bottle, one a dose. They expel all impurities from the blood. Delicate women find great benefit from using them. Sold everywhere, or sent by mail for 25 cts. in stamps; five bottles \$1.00. Full particulars from L. S. JOHNSON & CO., 212 North Tenth St., Boston, Mass.

WE LIVE IN PROGRESSIVE AGE

WE Aim to Improve!

AND NOT DETERIORATE.

Our New Brand, the

Cable Extra

will be found to be exceptionally fine, and we respectfully suggest that smokers give this brand a trial, when our statement will be fully verified as to quality.

S. DAVIS & SONS.



PUREST, STRONGEST, BEST.
Ready for use in any quantity. For making Soap Softening Water, Disinfectant, and a hundred other uses. A can equals 25 pounds of Soda.
Sold by All Grocers and Druggists.
E. W. GILLETT, Toronto

Christmas Presents For Gentlemen.
FREEMAN ELLIOT, HOLLIS ST.

Now showing
Gentlemen's Dressing Gowns
And Smoking Jackets;
Gloves and Mitts, all makes.
Silk & Reliable Cloth Umbrellas,
Neck Ties and Scarfs,
Pocket Hfids, Mufflers.

Largo Stock to Select From.
Opposite Halifax Club.

Fisco's Remedy for Catarrh is the Best, Easiest to Use, and Cheapest.
CATARRH
Sold by druggists or sent by mail, 50c. E. T. Hazelton, Warren, Pa.

DRAUGHTS-CHECKERS

All communications to this department must be addressed directly to the Checker Editor, Mr. W. Forsyth, 36 Grafton St.

SOLUTION.

PROBLEM 307. Solved by Mrs. Campbell, E. H. Humphreys, S. Granville, F. Hamilton and Willie Forsyth. We note that Mr. Granville solved it at eight and that the two last named solved it in 5 minutes. The position was:—black men 2, 15, 20, 28, King 32; white men 10, 19, 21, 23, King 26; white to play and win 21 17 10 6 17 14 26 31 15—24 2—9 9—27 w. wins

GAME 195—"Black Doctor."

From the West Lothian Courier.

A correction of "Lee's Guide" by Mr. J. Macfarlane of Glasgow.

11—15	14—18	10—17	30—26
23 19	23 14	21 14	7 2
8—11	1—6	7—11	26—23
22 17	32 28	c-14 10	2 6
9—13	15—19	11—16	23—14
17 14	24 15	18 14	6 13
10—17	10—19	13—17	14—18
19 10	31 27	10 7	15 10
7—14	6—10	3—10	18—15
25 22	a-20 16	14 7	10 6
4—8	8—11	17—22	15 19
29 25	22 18	d-7 3	black
2—7	1—20	2—26	wins.
27 23	b-25 22	19 15	
6—10	19—23	26—30	
24 20	26 19	23 18	
11—15	17—26	e-5—9	
28 24	30 23	f-3 7	

a 22 18 loses Mr. Wyllie played this against the late Mr. Yates and lost.

b 18 15 draws.—Lee's Guide.

c I submit that 19 15 here would draw for white and correct "Lee's Guide."—J. MACFARLANE.

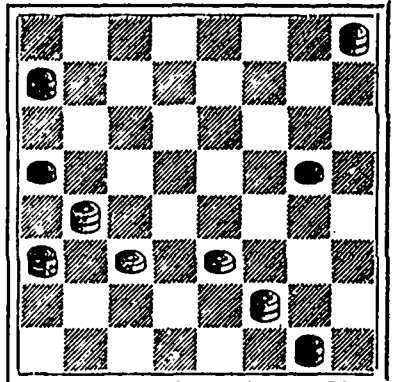
d At this point we fail to find a win for black if white crowns the piece on 2 instead of 3.—CH. ED. CRITIC.

e I submit this to win and correct "Lee's Guide." Mr. Clouser plays 30—26 here, and allows white to draw.—J. MACFARLANE.

f If 15 10 or 11, 30—26, 18 15, 26—31 black wins.

PROBLEM No. 309.

By Mr. Slocum of Chicago.
Black men 13, 16, kings 5, 21, 32.



White men 22, 23, kings 4, 17, 27.

White to play and draw.

We think this gem of Mr. Slocum's will puzzle the best of our solvers. Indeed we doubt if half-a-dozen Nova Scotian players can send a correct solution.



THE IMPERIAL BAKING POWDER
PUREST, STRONGEST, BEST.

Contains no Alum, Ammonia, Lime, Phosphates, or any Injurious.
E. W. GILLETT, Toronto, Ont.

IMPORTANT to FLESHY PEOPLE.
We have noticed a page article in the Boston Globe on reducing weight at a very small expense. It will pay our readers to send two cent stamp for a copy to Walker Circulating Library, 10 Hamilton Place, Boston, Mass.

CHARACTERISTIC.

It is characteristic of the House to have only the very best, and never deal in what is known in the trade as cheap instruments.

It is characteristic of the House never to ask fancy prices (as some dealers do, and come down if they have to). Every instrument is marked in plain figures at actual selling price, which is always the lowest, consistent with quality and a fair living profit.

By these, and other strict commercial methods, I have built up one of the largest, if not the largest, retail Piano and Organ trades in the Dominion.

I was awarded a special diploma at the late Provincial Exhibition for the best exhibit of Pianos, consisting of CHICKERING, KNABE, BELL, DOMINION, MASON & RISCH, and NEWCOMBE, which means the diploma of the exhibition in the Piano line.

W. H. JOHNSON,

121 and 123 HOLLIS ST. - HALIFAX, N. S.