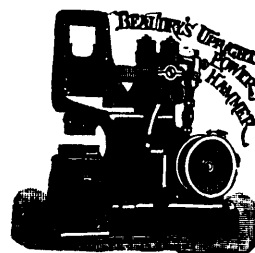




SIMPLE,



PRACTICAL

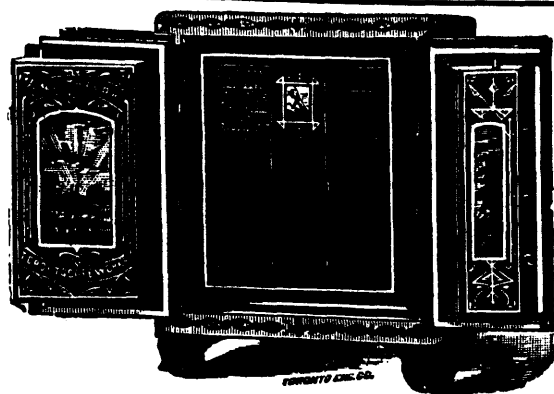


AND BEST.

BEAUDRY UPRIGHT CUSHIONED POWER HAMMER

The most handy, compact, and above all, the most efficient tool ever invented for Manufacturers of all descriptions, Railroad Shops, Steel and Machine Forgers, File and Vice Makers, Knife and Cutlery Makers, Axle, Edge Tool and Agricultural Implement Manufacturers, Carriage Builders and, in fact, all others who need a first-class Hammer, and one of extraordinary capacity and adaptability. Correspondence solicited.

MILLER BROS. & TOMS, SUCCESSIONS TO **Miller Bros. & Mitchell,** Sole Makers for **MONTREAL.**
 Toronto Office, 74 York Street.



J. & J. TAYLOR'S Double Tongue and Groove FIRE-PROOF **SAFES**

(Patented
 January 14th,
 1886.)

Established 33 years.

All our new style Fire-proof Safes are fitted with **TWO COMPLETE TONGUES AND TWO GROOVES** on both the door and door frames, which effectually prevent the heat from passing between the door and frame into the interior of the safe.

They are also fitted with **CHILLED CHROME STEEL PLATES** under the Lock and Bolt Spindles to prevent drilling; and have **DRY AIR-CHAMBER** inside to prevent dampness to papers.

See Catalogues and Prices on application.

J. & J. TAYLOR, Toronto Safe Works

INTERCOLONIAL RAILWAY OF CANADA.

The direct route between the West and all points on the Lower St. Lawrence and Bale des Chaleur, Province of Quebec; also for New Brunswick, Nova Scotia, Prince Edward Island, Cape Breton and Magdalen Islands, Newfoundland and St. Pierre.

Express trains leave Montreal and Halifax daily (Sunday excepted) and run through without change between these points in 27 hours and 30 min.

The through express train cars of the Intercolonial Railway are brilliantly lighted by electricity and heated by steam from the locomotive, thus greatly increasing the comfort and safety of travelers.

New and elegant Buffet sleeping and day cars are run on all through express trains.

The popular summer sea-bathing and fishing resorts of Canada, are along the Intercolonial, or are reached by that route.

The attention of shippers is directed to the superior facilities offered by this route for the transport of flour and general merchandise intended for the Eastern Provinces, including Cape Breton and Newfoundland; also for shipments of grain and produce intended for the European market.

TICKETS may be obtained, and all information about the Route; also **FREIGHT** and **PASSENGER RATES**, on application to

D. POTTINGER,

Chief Superintendent.

RAILWAY OFFICE, MONTREAL, N.B., June 29, 1891

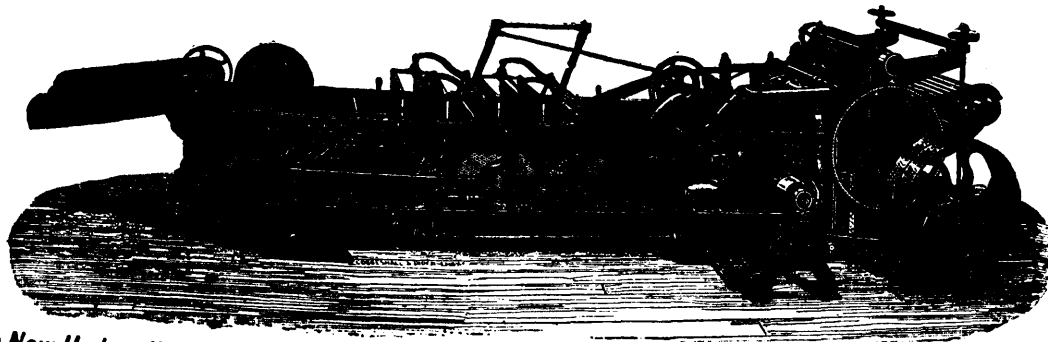
N. WEATHERSTON,

Western Freight and Passenger Agent, 93 Rossin House Block,
 York Street, TORONTO, ONT.

IMPROVED WOOL WASHER

BUILT BY
C. G. Sargent's Sons
 Graniteville, Mass.,
 U.S.A.

Builders of Wool Washers,
 Burr Pickers, Wool
 Dryers, etc.



The above represents our New Hydraulic Wool Washer, superior to Rake Machine. Send for Illustrated Catalogue.