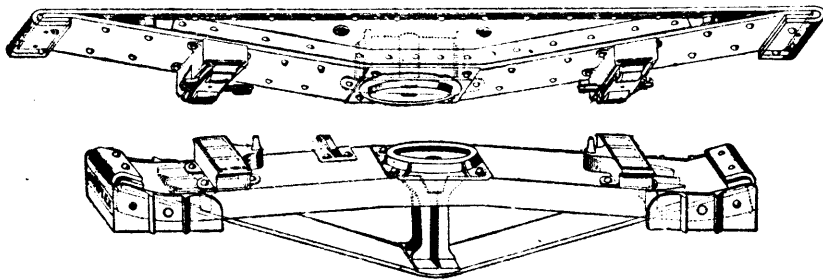


**S
I
M
P
L
E
X**



BRAKE BEAMS

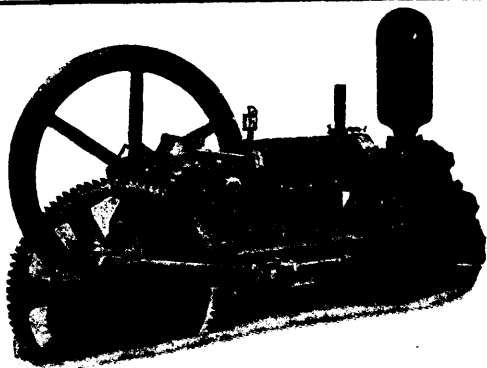


**SUSEMIHL FRICTIONLESS
SIDE BEARINGS**

The **SIMPLEX RAILWAY APPLIANCE
CO. OF CANADA, Limited.**

**OFFICE AND WORKS - ST. HENRI DE MONTREAL
NEW YORK OFFICE-141 BROADWAY**

**B
O
L
S
T
E
R
S**



Fairbanks-Morse & Co's Gasoline Combined Pump

NOTICE

The Canadian Fairbanks Co., Limited, has made arrangements with Fairbanks-Morse & Co., Chicago, to act as their exclusive Sales Agents in Canada for their well-known Railway Supplies. We respectfully solicit enquiries for

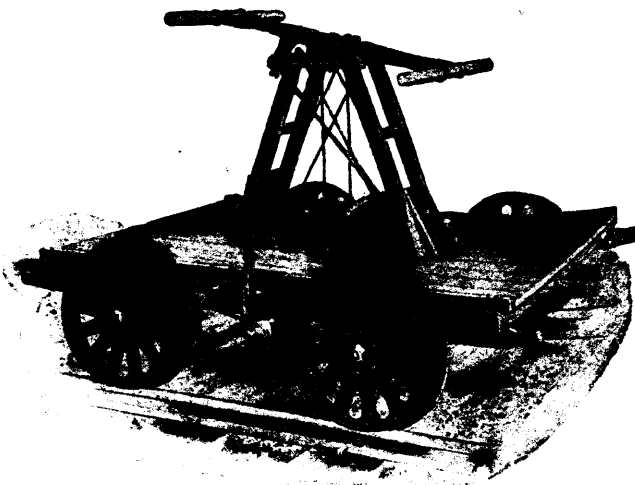
- | | |
|-----------------------------------|-----------------------------------|
| SHEFFIELD | FAIRBANKS-MORSE & CO'S |
| Hand Cars | Gas and Gasoline Engines |
| Push Cars | Combined Pumps |
| Velocipede Cars | Hoisting Engines |
| Motor Cars | Steam Pumps |
| Stand Pipes | Gas Producer Plants |
| Dynamos and Motors | Windmills |
| | Water Tanks and Towers |
| Track Tools, Shovels, Jacks, etc. | |

SEND FOR CATALOG

THE CANADIAN FAIRBANKS CO.

Limited

Montreal Toronto Vancouver Winnipeg



No. 1 Sheffield Hand Car