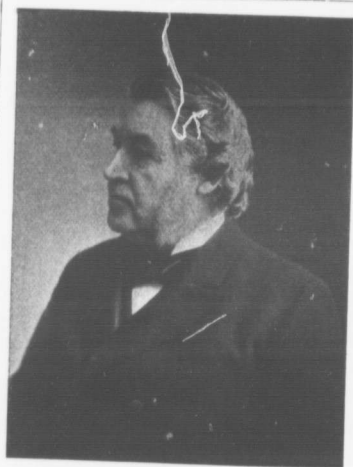




SIR WILFRED LAURIER, G.C.M.G.
LEADER OF THE LIBERAL PARTY.

Photo. by Montigny, Quebec.

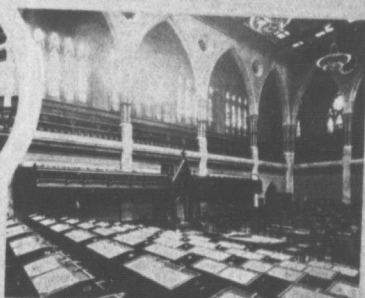


SIR CHARLES TUPPER, BART.
LEADER OF THE LIBERAL-CONSERVATIVE PARTY.

Photo. by Lancesfield, Ottawa.



SENATE CHAMBER



HOUSE OF COMMONS

SENATE CHAMBER AND HOUSE OF COMMONS, OTTAWA.
Where Canada's Laws are made.