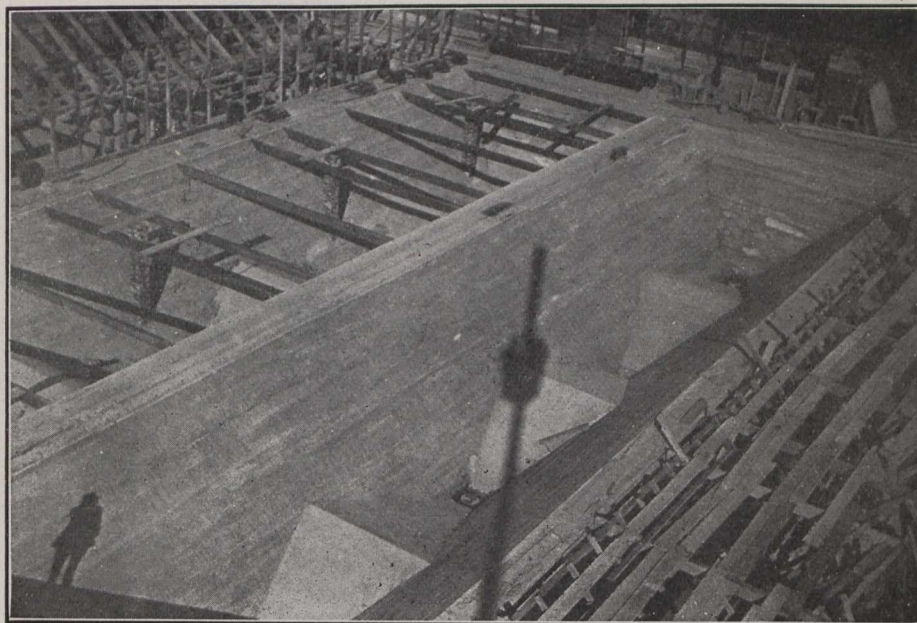


such material which gathers in front of the screens and which cannot be removed by the rakes. This building will be equipped with two cranes, one in the screen chamber and the other in the pump chamber, for the purpose of handling the machinery, etc.

angle of 20 degrees from the horizontal. At the bottom of each of these compartments is a valve, which is opened and closed by a stem reaching above the roof of the tank. This valve is connected to the cast-iron pipe, which is the outlet for the sludge from the bottom of the tanks.



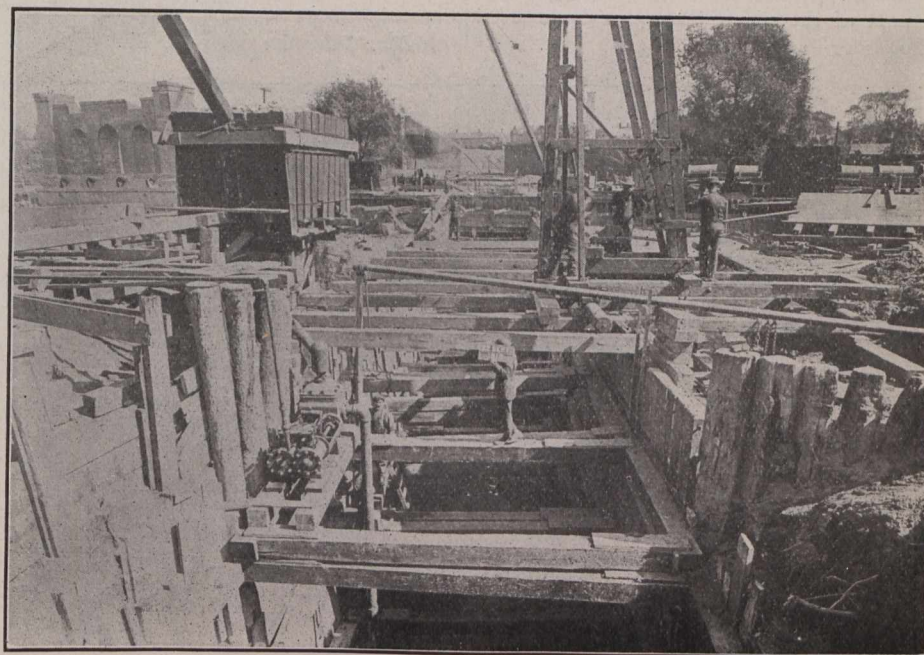
Bottom Tanks showing Drain for taking away Sludge.

The sewage from the low-level sewer, after passing through the screens, is pumped into a channel, which thus conveys the high-level and low-level sewage to the tanks.

The sewage tanks are somewhat after the design of the "Dortmund" tanks, modified to suit the conditions of this city. The tanks are constructed of concrete, reinforced

The sewage from the screen-house is distributed among the tanks by the main inlet channel and its branches.

The present scheme embraces the construction of twenty-four tanks. These tanks are placed under one roof, having two tanks lying end to end in one direction and twelve tanks side by side in the other.



Don Siphon. Excavation of trench for pipe below bed.

where necessary, and are each 100 feet long and 25 feet wide. The four upper side walls of the tank are vertical, but for the lower twelve feet the four sides converge on 45 degree slopes. The bottom of each tank is divided into four hopper-shaped compartments by means of slopes placed at an

Inlet and outlet branches of the main inlet and collecting channels are placed alternately between the sets of tanks. At the side opposite to that on which the main inlet channel is placed is the main collecting channel. This conducts the tank effluent to the outlet chamber, from which