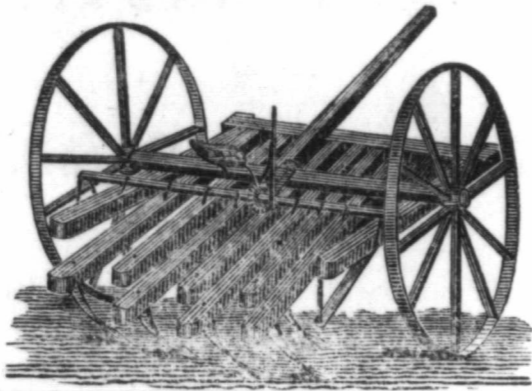


Perfection Attained at Last!



Centennial Cultivator

John Wade, Hyde Park, Ont.

This invention meets a demand long wanted in this class of agricultural implements; namely, uniformity of depth on any ground, no matter at what angle it is placed; lightness of draught, and convenience in driving—a seat being attached for the driver, the same as in a Reaper. The lever for elevation can be adjusted without the driver leaving his seat. The teeth are wrought iron, laid with steel. At a trial of this Cultivator, it was found it did more work in a given time than any other. The proprietor is prepared to offer favorable terms to manufacturers for making this Cultivator. The price is less than the ordinary machines in use.

Address, JOHN WADE, Hyde Park, Ont. sept'76-tf

PETER GRANT, PETERSVILLE, ONT., (LATE FOREMAN AT M'KELLAR'S)

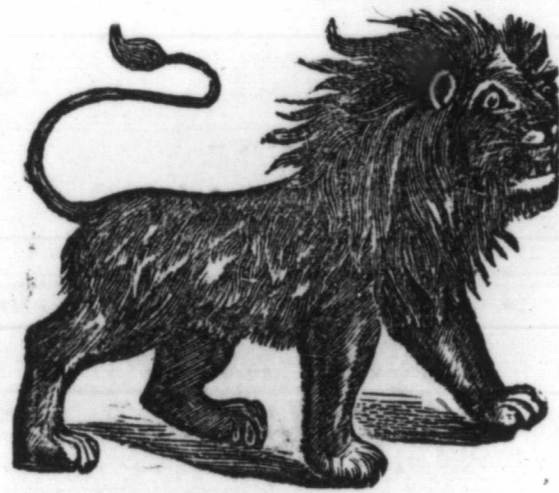
WAGON & CARRIAGE MAKER

Jobbing and Repairing done with neatness and despatch. Horse-shoeing and Blacksmithing in all its branches. sept'76-tf

SPRING TIME COME AGAIN!

You will want to shed you Winter Clothing and fit yourself out in something

Nice, Good and Cheap.



We have got the Goods to do it with Dry Goods, Millinery, and Mantles

CASH ONLY.

R. WALKER & SONS,

Dundas Street, LONDON AND TORONTO. 1-y

GEORGE BURNS,

MANUFACTURER OF

Boys' & Youths' Clothing

Wholesale and Retail.

THE

Largest Establishment in the Trade

IN ONTARIO.

Special Arrangements Made with Grangers.

GEO. BURNS. 1-y

BANKRUPT STOCK OF FRESH TEAS,

will be sold at the following prices

At T. E. O'Callaghan's:

\$1.00 Tea for	65c
75c Tea for	50c
3 lbs. Tea for	\$1 00
4 lbs. Tea for	1 00
5 lbs. Tea for	1 00

Sugars, &c., Equally Low.

T. E. O'CALLAGHAN.

HONEST FERTILIZERS.

Buffalo Fertilizer Works.

Dissolved Bones highly Ammoniated, \$40 per Ton, Bone Meal, Bone Dust, AND

PLANT FOOD.

All Manures made at these Works are produced from Bone only. No Mineral Phosphates used. Send for Circular and copy of a Letter from a leading Grange, giving exact results of their experiments.

Special terms made with Granges ordering direct from General Agent.

A few More Agents can be Appointed.

For Circulars and Agencies, apply to

J. R. ADAMSON,

GENERAL AGENT FOR ONTARIO, 35 KING ST. EAST, HAMILTON.

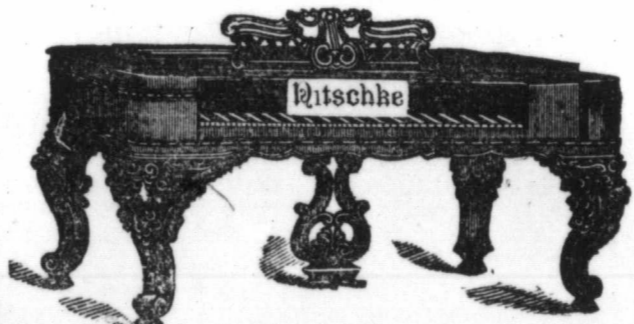
July-1y



NITSCHKE'S PIANO MANUFACTORY, and MUSIC STORE,

Corner of Dundas and Wellington Streets, LONDON, ONT.

Great reduction in prices for Pianos. For parties in want of a fair Piano at a moderate price, we have added to our well-known



First-Class Home-made Pianos, imported American Pianos, bought for cash, therefore we are able to sell them CHEAPER than agents who sell on commission. 1-y

GOTHIC HALL, ESTABLISHED, 1846.

Elastic Stockings, Elastic Knee Caps, Trusses, Shoulder Braces, all sizes, Surgical Appliances, Every Appliance for the sick room.

B. A. MITCHELL & SON, Dr. Mitchell, Manager.

Trusses fitted on without extra charge. april'76-1y

A. & A. STEWART, Importers and Breeders of Shorthorn Stock of the celebrated Seraphina and other strains.—Herd headed by Udon, by 7th Earl of Oxford; dam, Udon 2nd. Lobo P. O., Ont. Jan 76 ly

JOHN CAMPBELL,

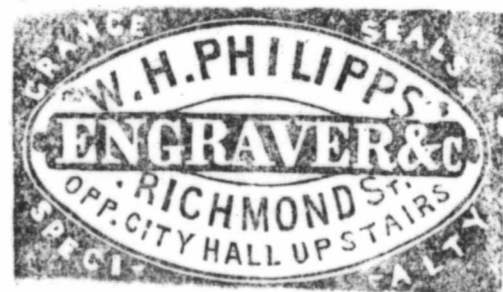
MANUFACTURER OF

CARRIAGES, BUCCIES, SLEIGHS, ETC.,

King Street west, LONDON, ONTARIO.

The subscriber has now on hand the LARGEST AND BEST STOCK in the Province, and will sell at greatly REDUCED RATES TO PATRONS OF HUSBANDRY, and Cash Wholesale Customers.

King Street west, London, Ont April 76 1y



LONDON, ONTARIO. Oct., 1875-1y

JOSEPH O'HIGGINS & CO.,

Wholesale and Retail

GROCCERS

WINE AND LIQUOR MERCHANTS,

146 Dundas Street, London

Opposite Market Lane.

GRANGERS SUPPLIED AT WHOLESALE RATES. 1-y

Wilson, Lockman & Co.

MANUFACTURERS,

HAMILTON, - ONT.,

CANADA.



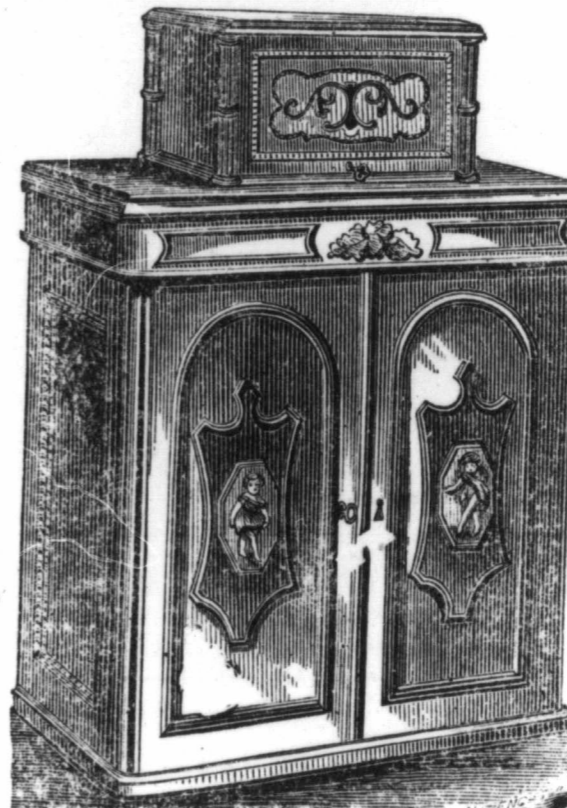
CUT No. 1

Represents Plain Family Machine, with solid shuttle and adjustable feed. The stand has solid walnut table with drawer, brace, balance wheel guard, and well, working on hinges, in which the Machine is set—this well protects the clothes of the operator, and enables her to clean and oil the machine without changing her position, all of which makes it the most complete, simple, attractive and durable Family Machine in the market at the present time.



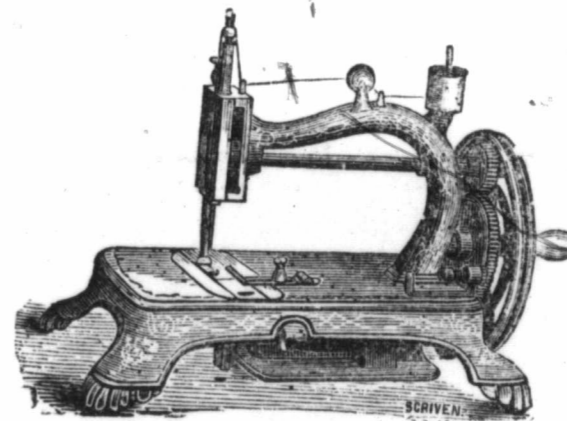
CUT No. 2

Represents Half Cabinet Case Family Machine with walnut cover, lock and hinges: in every other respects like No. 1.



CUT No. 3

Represents full Cabinet Case, solid walnut, machine inlaid with pearl, making a very handsome as well as a useful piece of furniture.



CUT No. 4

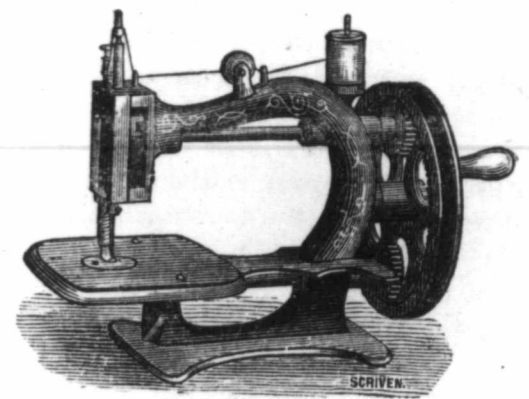
Represents our Hand Shuttle Machine; it is set into a beautiful light iron frame, the feet of which are covered with rubber, thereby preventing it from damaging any piece of furniture upon which it may be placed; it also prevents garments from coming in contact with the oily parts of the machine during the operation of sewing, and yet leaves every part of the machine easy of access which requires cleaning and oiling, making it complete and practical.

Wilson, Lockman & Co.,

MANUFACTURERS,

HAMILTON, - ONT.,

CANADA.



CUT No. 5

Represents the Wilson Single Thread Machine. We, as manufacturers, having had unprecedented success with our Family and Manufacturing Sewing Machine, and having extensive experience of the wants of every market in the world, have decided to introduce a Single Thread Sewing Machine with capacity sufficient for any kind of work that a First-Class Family Machine is able to perform. We will not hazard our already established character and reputation as manufacturers of first-class machines, but will make our Single Thread Machine another exponent of the character and confidence we now possess.



CUT No. 6

Represents our Heavy Manufacturing Machine, suitable for either cloth or leather. The Cloth Machine has a plain pressure-foot. The Leather Machine has a rolling pressure-foot. The difference in the feet adapts them, in a particular manner, for the performance of either cloth or leather work in the most efficient and durable manner. Its mechanical structure and workmanship is surpassed by none and equalled by few. It is also japanned and ornamented in first-class style. Tailors and shoemakers, also manufacturers of clothing and boots and shoes, would do well to examine and test our machine before purchasing any other. We are confident that a thorough test will satisfy all who are capable of judging that our machine is the best and cheapest in the market.

OUR LATEST IMPROVEMENTS

- SOLID SHUTTLE
- ROLLING TABLE IN HEART MOTION
- ADJUSTABLE FEED
- ROLLING TABLE IN SHUTTLE DRIVER
- ROUNDED NEEDLE BAR
- SPLIT TENSION STUD
- BRACE IN STAND, AND
- BALANCE WHEEL GUARD

Parties desirous of procuring a good Sewing Machine, would save money by calling on or corresponding with us before purchasing elsewhere.

Over 70,000 of our Machines are now in use, and giving the very best satisfaction. We guarantee every machine we make.

Wilson, Lockman & Co.,

MANUFACTURERS,

HAMILTON, - ONT.,

CANADA. 1-y

Wilson, Lockman & Co.

MANUFACTURERS,

HAMILTON, - ONT.,

CANADA. 1-y