

ENTERTAINMENT

Doll House meets romance

American Dreamer
Capitol Square Theatres

review by Mike Evans

What happens when Henrik Ibsen's *A Doll's House* meets Agatha Christie and the Harlequin Romance? You get a uniquely entertaining hybrid, called in this case, *American Dreamer*.

Starring Jo-Beth Williams (late of the *Big Chill*) and Tom Conti (*Reuben, Reuben*), *American Dreamer* is the story of Cathy Palmer, a suburban housewife, repressed and oppressed by the banalities of her domestic situation, who wins a trip to the most romantic city in the world: Paris. Leaving her Casper Milquetoast white-bread husband holding the (golf) bag, Cathy flies to Paris where she begins to experience some of the realities of her favorite pulp romances,

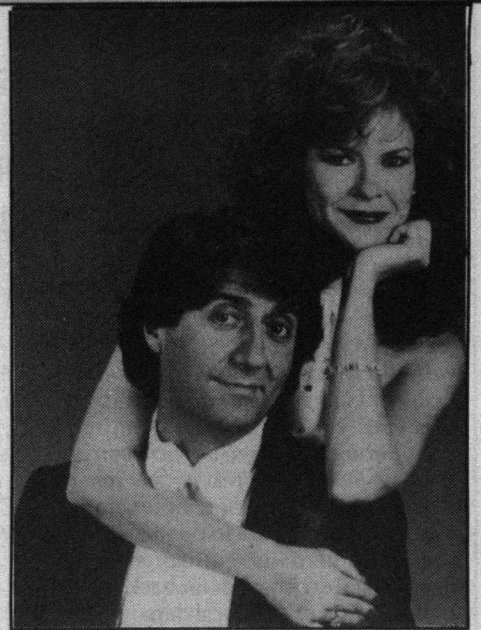
the Rebecca Ryan stories.

When a car accident causes Cathy to adopt the persona of Rebecca Ryan, world-famous female detective and *femme fatale*, she embarks on a series of madcap adventures to save the life of the French opposition leader, played by Giancarlo Giannini. There are a few surprises in store, however.

Cathy/Rebecca also initiates a love affair with Alan McMann (Tom Conti), a rumpled English playboy, to whom she attributes the identity of Dmitri, Rebecca Ryan's special assistant and closest personal friend. He, in turn, knows as nobody else can, that Cathy cannot possibly be Rebecca Ryan — but as he becomes more embroiled in the series of events precipitated by Cathy/Rebecca's pursuit of . . . something, the lines between fantasy and reality become increasingly indistinct.

American Dreamer is simply told and, well, not exactly straightforward, but certainly unaffected under the direction of Rick Rosenthal. Tom Conti is marvelous as Alan McMann and Jo-Beth Williams is also very good as wistful Cathy and dashing Rebecca. In addition to being very funny, there are some very touching moments in *American Dreamer*, particularly when Cathy returns from the delusion of Rebecca and must say goodbye to Alan, with whom she has fallen in love. It is also always a pleasure to see unaffected performances from children, in this case Cathy's sons.

This comedy/thriller offers more than one surprise and is thoroughly enjoyable. If you're looking for an evening of light entertainment, something sweet but not cloying or filling, try *American Dreamer*.



Tom Conti and JoBeth Williams

Confusion done to perfection

Body Double
Columbia Pictures
Paramount Theatre

review by Ken Maynard

Body Double is a confusing film. But it is confusion done to perfection.

Jake (Craig Wasson) is a down-on-his-luck actor who is caught in an intricate web of voyeurism, pornography, and ultimately, murder. You see, he picks up the harmless habit of peeking through his telescope at the woman across the street. Seems she has a little striptease ritual she goes through every night before calling it a day. But then when Jake witnesses her murder, the tables turn, and the voyeur suddenly finds himself on the other side of the telescope.

Brian de Palma is well known for his graphic visual effects, and *Body Double* lives up to expectations. In fact, a lot of knee-jerk activists have complained boisterously of the nudity and violence depicted in this film. If protesters took a little time to evaluate it, though, they would realize that *Body Double* is a film about pornography and the effects it can have on a relatively healthy, sane individual. The film itself is not pornographic.



Craig Wasson and Melanie Griffith star in *Body Double*.

The technical effects are astounding. Swirling camera shots and fast-paced directing heighten the sense of confusion as we

follow the tormented psyche of the victim of pornography and a murder frame.

TRIVIA

by Don Teplyske

Well, again, there is no winner of our fab album prizes. Are the questions too tough? I doubt it. Is it apathy? Probably. The jackpot rises to two albums this week. Just answer any or all of the questions and drop them off at the Gateway office, Room 282 SUB.

Music

1. For whom did Bruce Springsteen open the New York City Schaefer Music Festival, August 3, 1974?
2. Holly Vincent and Joey Ramone recorded a Sonny and Cher song. Which song did they release as a single in 1982?
3. She is now Mrs. Steve Lillywhite. By what name was she known when she recorded *There's A Guy Works Down The Chip Shop Swears He's Elvis*?

Movies

4. Many films have been made about people shrinking. In which did Racquel Welch star?
5. Who starred as Shane?
6. In the movie *Tommy* who starred as the Acid Queen?

Television

7. What was the name of *The Galloping Gourmet*?
8. On the series *Square Pegs*, what band was Johnny Slash's seventh favorite?

Last weeks answers, p. 12

EDMONTON CHAMBER MUSIC SOCIETY

1984-85 Concert Series

November 28 • Quartetto Beethoven di Roma

January 16, 1985 • Hortulani Musicae

March 13 • Berlin Octet

April 3 • Borodin String Quartet

All concerts in Students' Union Theatre, U of A. Season's membership for remaining four concerts \$36 (\$18 for seniors and full-time students). All Woodward's Stores, SUB Box Office, Canadiana Galleries (12222 Jasper Avenue), or by mail 8359-120 Street, Edmonton T6G 1X1, and at the door. SINGLE TICKETS ONLY FOR QUARTETTO BEETHOVEN DI ROMA concert \$10 at the door.

CAMPUS COPY CENTER

11147-87 Ave
Across from the University
in Campus Towers

439-4252

WE PROVIDE:

- FAST SERVICE
- TOP QUALITY
- LOW PRICES
- SMILES
- FREE PARKING

WE DUPLICATE:

- LETTERS
- MAILING LABELS
- THESES
- BOOKS
- TERM PAPERS
- PRICE LISTS
- BROCHURES
- FLYERS

FREE SERVICES

- Collating
- Reduction
- Colored Paper
- Stapling
- 3-holed Paper (8 1/2" x 11")

ALSO AVAILABLE:

- CERLOX BINDING
- TRANSPARENCIES
- LABELS
- LEGAL SIZE PAPER
- BULK PAPER
- MICROCOMPUTER DISKETTES

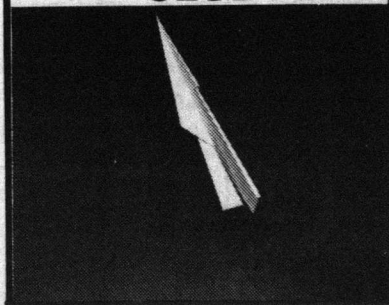
OPEN
7
DAYS
A WEEK

MON. - FRI.
8 am - 8 pm
SATURDAY
10 am - 4 pm
SUNDAY
12 noon - 4 pm

VISA
&
MASTERCARD
WELCOME

SU records & tapes

THE PARACHUTE CLUB



PARACHUTE CLUB
1st LP
features "rise up"

PARACHUTE CLUB
"at the feet of the moon"
(2nd great LP)



PARACHUTE CLUB
appearing live at
Dimwoodie
Sat. Nov. 24

ON SALE
\$6.99



Available on
LP & Tape

HUB Mall 9200-112 Street • 432-5024
Mon., Tues., Wed., Fri., Sat. 9:30-5:30
Thurs. 9:30-9:00

We've got it.