

# Van Brunt Light Draft Disc Drills

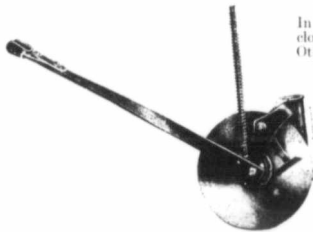
THE VAN BRUNT LIGHT DRAFT DRILL is the one that works in all kinds and conditions of soil. Gumbo, mud or trash do not stop it. In any soil in which horses or engines can travel, the Van Brunt follows and keeps up its good work without missing a foot.



This is the LIGHT DRAFT DRILL. Why ask your horses to pull back and forth across your fields—mile after mile—a Drill that weighs 300 to 400 pounds heavier than the Van Brunt? Why hitch on to heavier, clumsier machines when the light running, easy pulling Van Brunt will go more miles and stand more wear?

Made in 12, 14, 16, 18, 20, 22 and 24 Single, Double Disc, and Shoe Interchangeable

Light Draft Van Brunt Drills are built for big things and small. They will plant any number of acres for many years and always keep going.

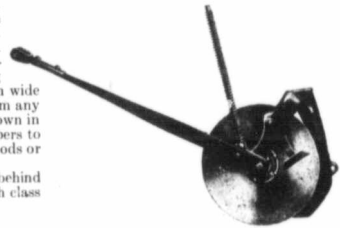


NEW STYLE, 1910

THE NEW VAN BRUNT FURROW OPENER leads the way. In 1900 Van Brunt produced the first successful Single Disc with closed delivery. It revolutionized the construction of Grain Drills. Others have tried to follow. Now we take another step in advance. THE 1910 VAN BRUNT DISC with Boot and discharge opening within the circle of the Disc Blades takes correct seeding sure. The Disc Blades, working in all kinds of soil, open wide furrows, and all the seed gets right to the bottom free from any obstruction. It beats the dirt. All the grain is planted down in the ground at an even depth. No projecting boots or scrapers to hold discs out of ground when going over stones, hard clods or trash.

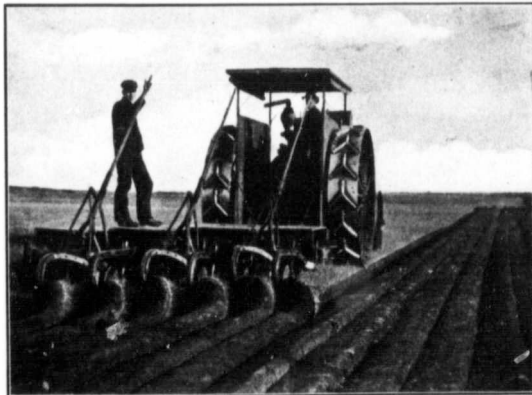
The makers of the Van Brunt, with 50 years' experience behind them, have produced a Drill WARRANTED to do high class work not only for one season, but for many seasons.

Write for Catalogue



OLD STYLE, 1900

## John Deere Engine Plows



A Six Bottom John Deere Engine Plow. Outfit of Jas. G. Henry, Guernsey, Sask.

Note Quality of Work.

A gauge wheel runs between each pair of bottoms making it possible to use rolling coulters in the right way. Beams carry stubble, turf and stubble, or breaker bottoms. And John Deere Bottoms have never been equalled for quality of work and light draft.

We have just published a new book which is the best thing ever put out on engine plows. It is FREE on request. Ask for Package No. 50

### 4, 6, 8, 10, 12 or 14 Bottoms

Labor most advantageously employed is the most productive.

The two men operating the engine plowing outfit shown here will do from fifty to one hundred per cent more work than six men and teams operating single bottom plows.

Therefore, the profit on their labor is greater.

Or, to put it another way, the resulting crop costs less and is consequently more profitable.

This principle of the economical use of labor is one of the essentials of profitable farming.

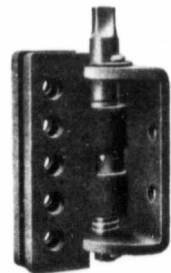
John Deere Engine Plows are built to operate most economically.

And to do the best work.

Here are a few important features.

Indestructible bridge-like steel frame carried on three easy running wheels and covered with perfectly level platform. Plows attached to frame in pairs, each pair being operated by a single lever. One man can operate a John Deere Engine Plow, regardless of size. Each beam point is attached to a screw clevis so plows can be given exactly the right adjustment.

This is the Screw Clevis. Found only on John Deere Engine Plows.



Gives the Plows an Absolutely Accurate Adjustment.

# JOHN DEERE PLOW CO. LTD.

Winnipeg

REGINA

SASKATOON

CALGARY

EDMONTON