

JOS. McPHEE & SONS.

In considering the enterprises that have materially assisted in the development of Vancouver Island, we find many with a substantial bearing thereon, and in this connection the business



Residence of Mr. Jos. McPhee, Courtenay.

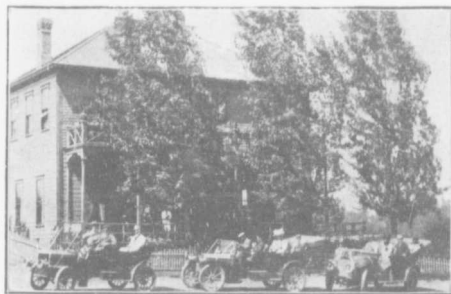
conducted by Jos. McPhee & Sons at Courtenay and Cumberland is worthy of particular mention.

The business consists of two large general stores, the largest in the district, and the stock carried is well selected and most complete. It includes dry goods, groceries, hardware, boots and shoes, crockery, glassware, men's furnishings, etc. They are also special agents for Sherwin & Williams' paints, Sharple's Cream separators, Slater shoes and Campbell's made-to-order clothing. Special attention is paid to outfitting new settlers coming into the country. The business was established by Mr. McPhee thirty

years ago and through the energy and progressiveness displayed the business has been brought to a standard which is a credit to the community. Mr. McPhee is a progressive man and takes a deep interest in the welfare of the district.

RIVERSIDE HOTEL.

This hotel is magnificently situated on the Courtenay River and overlooking the beautiful farming valley and the Gulf of Georgia. It has lately been remodelled, enlarged and newly furnished throughout and can be recommended as a first class hotel catering to the tourist and travelling trade. The hotel is provided with hot and cold water, gas, excellent cuisine, sample rooms, barber shop, telephone, etc. Boats, fishing tackle and guides can



Riverside Hotel, Courtenay.

always be obtained at the hotel, and the hunting and fishing in the immediate locality assures this hotel a liberal patronage during the season. Mr. O. H. Feckner, the proprietor, is an experienced hotel manager and carefully attends to the wants of his patrons.