

THE CANADIAN ARCHITECT AND BUILDER

Vol. XX.—No. 10.

Toronto, Montreal—OCTOBER, 1907—Winnipeg, Vancouver

PRICE 25 CENTS
\$2.00 PER YEAR

TILES FAIENGE MOSAICS
Craven, Dunnill
& CO., LIMITED
JACKFIELD, R. S. O., SHROPSHIRE.
ENAMELS WALLS LUSTRES

Asbestos Lumber, Shingles and Sheathing Fireproof. Indestructible.
Everlasting

For Fireproofing Interior and Exterior of all Classes of Buildings.

ENDORSED BY FIRE UNDERWRITERS

SEND FOR SAMPLES

A. B. ORMSBY, LIMITED

Factories: Queen & George Sts., TORONTO. 677-9-81 Notre Dame Avz., WINNIPEG
Montreal Agents: Stinson-Roob Builders' Supply Co., Limited, 188 William Street.

OTIS-FENSOM ELEVATOR CO., Limited

MANUFACTURERS OF "OTIS STANDARD ELEVATORS"

HEAD OFFICE:
CONFEDERATION LIFE BLDG.,
TORONTO.

MONTREAL OFFICE
423 ST. JAMES ST.

WINNIPEG OFFICE
44 CANADA LIFE BUILDING.

"MADE IN CANADA"

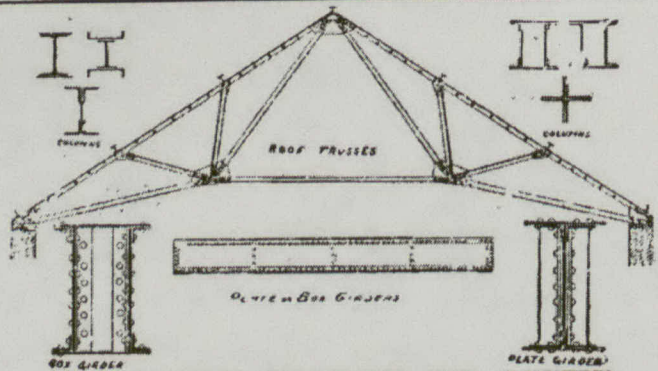
Bent Glass

Made in all Kinds of Glass
on Short Notice.

Large Bent Plate Glass for
Shop Fronts a Specialty.

Toronto Plate
Glass Importing Co.
(HILL & RUTHERFORD)
135-143 Victoria Street

MARKET STS:
209/213 Victoria Street
TORONTO



DOMINION BRIDGE CO. (LIMITED)

WE BUILD { Bridges of all designs in both Iron and Steel, Roofs, Telephone Poles, House Girders and all kinds of Structural Iron Work.

OUR STOCK IN HAND COMPRISES { Steel Beams, Angles, Tees, Channels, Plates, Rolled Edged Flats, Bars, Rivets, Rounds, &c. Iron Beams, Bars, Squares, Turnbuckles, Rivets, &c.

Estimates furnished for Structural Iron Work delivered at building or erected

GEORGE E. EVANS,
Ontario Agency: Room 38, Canada Life Building, Toronto. Telephone Main 2164

Post Office Address:
DOMINION BRIDGE CO., Ltd., Montreal, P. Q.
Works at Lachine Locks, P. Q.

TURNBULL ELEVATORS

SEE AD. PAGE VIII

ELEVATORS

The Turnbull Elevator Mfg. Co. Toronto

For all purposes. Satisfaction guaranteed.
Write for prices and references

THE PARKIN ELEVATOR WORKS
258 Catherine Street North,
HAMILTON, ONT.