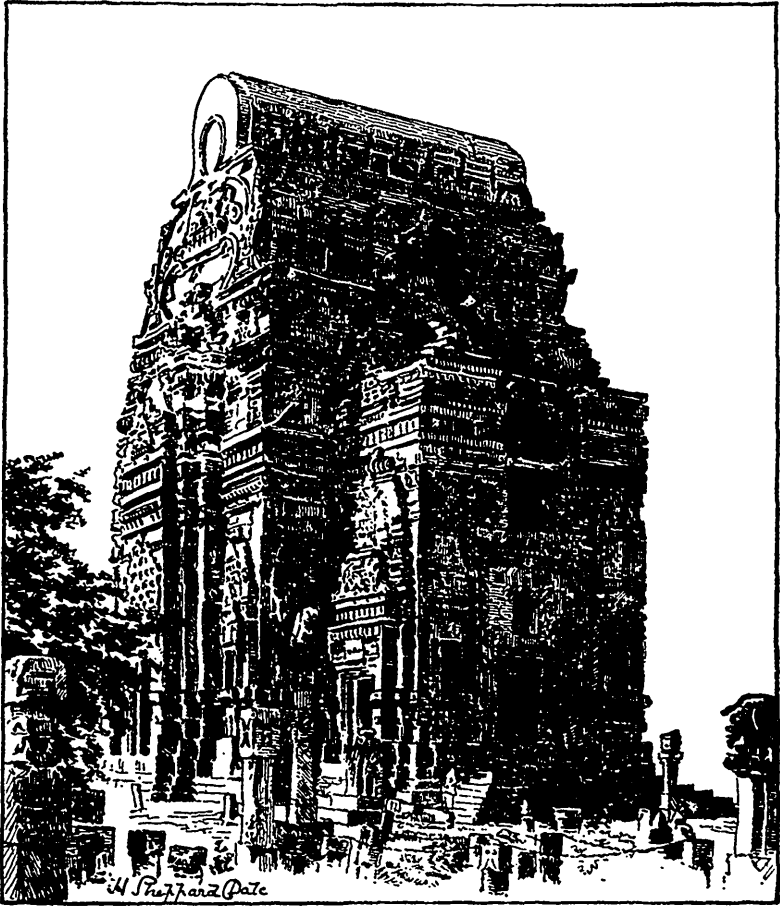


across. The fine doorway is thirty feet high. The date of its erection is put by Fergusson in the 10th and 11th century.

The deserted city of Fatehpur Sikri is a place of singular interest and beauty. The superb gateway, shown in our cut, must not be taken as any part of the architectural scheme of the noble mosque, to which it forms the entrance. It is really a triumphal



TELI-KA MANDIR, GWALIOR.

arch, erected many years after the mosque, in commemoration of conquest, as the inscription on the left hand of the gate entering the quadrangle states:—"His Majesty, King of Kings, whose place is as Heaven, Shadow of God, the Emperor. He conquered the Kingdom of the South, *i. e.*, in A.D. 1601."

The corresponding inscription, on the other side of the entrance, is translated thus:—"Jesus, on whom be peace, said, the world is