

## Winter Hats To Show Variety Of Shapes With Odd Trimmings

All Colors of Spectrum in Vivid Shades, Alone and in Charming Combinations, Is Keynote of Fashion's Decree.

IN selecting the season's outfit there is nothing more important than a becoming hat. To a becoming hat and a sense of humor is attributed the success of one of the best known, and correspondingly most successful women artists. After all, the hat is the frame for the face, and the face is the most interesting part of the whole picture. Therefore, as we have said before, the hat is one of the most important factors in the season's scheme of clothes.

### New Ideas Evidenced.

For the coming winter many new ideas have been introduced by the millinery designers. They have taken all the fabrics and shapes of other seasons and used them in new and original ways to portray the mode of 1922. There will be big hats and little hats, shaped hats and crushed hats and crushed turban effects, hats without brims and hats with them, brims that are cut close to the head at the back and gradually widen by many inches as they reach the front. There will be brims that turn up and brims that turn down, there will be the demure little hat inspired by the police bonnet our grandmothers wore, and there will be smart and dashing turbans suggested by the peasant headresses of foreign lands.

No matter how demure the inspiration of those hats may have been there will be always an up-to-date smartness about the new versions, for they are very striking in color and are tilted with a certain daring that is both chic and modern.

### Striking Color Combinations.

Brilliant colors, Roman stripes, metallic effects, beads, buckles, gaudy feather trimmings are all shown in the winter millinery display. A little toque that is being worn by one of the best known actresses is a small wrapped turban in which are successfully and brightly combined a Roman stripe and the same vivid color in kid. At the front the only trimming is a large ornamental pin that is pushed through at a very effective angle.

A mushroom that combines felt and a metal ribbon in an interesting way is developed in jade and silver. The large crown is made of the felt and the brim gives a checker-board effect by means of interlaced strips of the felt and a narrow silver ribbon. Felt holds its own persistently in the millinery world and appears on many of the newer models in combination with other fabrics, notably velvet, kid and the metal edged or entirely metal ribbons.

It is also used for flowers, some of which are cut out and applied flatly to the hats, others are made more realistic and put on in bunches or in wreaths. Perhaps the most novel of them all is the big calla lily that wraps itself about a center of yellow cheville.

### Felts Much Liked.

Felt fringes too are good and many of them are tipped with metal, sealing wax or nail heads to lend a sparkle to the winter bonnet. Perforated felt brims are shown either faced with contrasting color and fabric, or left for the narrow metal ribbons to lace themselves through the perforations.

Sport hats of felt are still good and one with a crush crown upturns a rolling brim which is edged with an overlapping row of many colored felt disks edged with silver sealing wax.

While the interlaced effect described on the mushroom sailor is very popular, felt is often seen cut out in designs and applied flat to the brim and crown of the hat, which retains a simple silhouette, and requires no other trimming.

### Ribbons Effectively Used.

Ribbons are used in many different ways. They are gathered and put on as fascias to the small toques. They are made into flower-like rosettes, and are interlaced through the slashed brims and crowns of the simple hats. In their narrowest version they are used to carry out very interesting embroidery patterns combined with beads, with appliqued motifs of velvet, felt or kid. The use of kid, of patent leather and suede is one of the outstanding features in the display for fall and very novel and imaginative effects have been attained by the clever use of them. They form facings of brimmed hats, are crushed in combination with gay striped materials of silk persuasion to form the soft toques that come from the Oriental headresses, they are cut out in any number of fantastic silhouettes to paste themselves flat against a background of velvet, of silk, or of felt.

Fringes of leathers and suedes tipped with bright metal nail heads form a unique trimming for the models with upturned brims.

### Unusual Embroidered Designs.

Embroidery has proved its charm by enduring many seasons, and it promises to outdo all its own previous records in color and design for the coming season. Worked out in chenille, worsted yarn, in narrow ribbons, in metal thread, combined with beads of all kinds, with cutouts of fabric that contrast with the material of which the hat itself is made, embroidery lends itself most attractively to the winter mode.

Duvelin in combination with silk or baronette satin in both the high colors and the more sober shades, promises to be good for fall. Bright colors will predominate for street wear, but there will always be the generous number of more dressy hats made on large, blocked lines for the more formal occasions and these for the most part will be of black with colorful trimming saving that of self color for popularity.

### Feathers Are Smart.

Ostrich will claim a place for itself on the winter millinery and will appear in conventionalized novelties rather than in the sweeping plumes. Pheasant quills will be very popular as will the glycerined ostrich and the burnt peacock.

Trimming will show great ingenuity of design and flowers made of yarn and angora, of felt, chenille,

tinzel, jet and other materials will all make an appearance during the season. One bunch of fruit that is important is made of cork, painted in the pastel shades, in very lovely tones. The fruit and the foliage are both cut from the smooth cork and painted a flat color.

Belt-like bands that end at the front with elaborate and colorful buckles or cabachons will surround many a crown, and the crowns will be very large and high on many of the hats, while others will follow rather closely the outline of the head itself.

### Many Unusual Effects.

To sum the whole display of winter millinery it might be said that hats of every size and every shape will be good, trimmed in the most unexpected trimmings, put on in the most surprising ways, but the key-note of the whole fashion decree in hats is color. Color in vivid shades, and every shade of the spectrum asserts itself either alone or in combination with other shades.

As far as my lady's hats are concerned the season promises to be a gay one.

### RHINESTONES.

Rhinestone buckles and straps are seen on many of the gowns of gold and silver tissue. Frequently small stones outline patterns on the fabric.

### DANCE FROCK.

A lavender chiffon dance frock comes in a shaded tone that is deeper at the hem. It has a lovely girle of silver leaves arranged on a blue girle.

A senator says the new tariff is terrible. Others think it is even worse than that. Borrow money now and you can pay it back for a Christmas gift.



MISS MARY FOTHERINGHAM,  
Representing Artistic Ladies' Wear Company

### VIOLET VELVET.

One of the most lovely evening frocks seen recently is of violet-colored chiffon velvet with draperies cut very low and held in place with rhinestone buckles.

## GLASSWARE ADDS BEAUTY TO HOME

Decorative Pieces Offered Are Joy To Behold and Possess.

There is nothing which adds so much to the brightness and cheerfulness of a home as appropriate glass or pottery. The blues, ambers, lavenders and reds of both foreign and domestic glass and pottery, found in our shops, are a joy to behold and possess.

Venetian glass has long been used to give distinctive character to a room which needed its delicate coloring in lemon, yellows and ultramarine blues. There are few things more enjoyable to have correctly

placed than a wistaria compote or perhaps a pair of candlesticks in citron and mauve with an intricate design in fruits and flowers.

One make of glass has the quality of resisting heat. An entire set in gay turquoise creates an unusual picture for a five o'clock tea. The tea pot belonging to this set may be set directly upon the heat. Your guests can watch the water boil.

### Welcome Bits of Color.

Other factories are producing interesting candlesticks, scent vases in pairs, flower bowls in wistaria, Chinese blue, sea green and amber, sparkles from which would brighten any gloomy nook, or corner.

Pottery may be skillfully combined with glass for some occasions. Then here is lustre which in the form of a plate or a bowl, has the quality of reflecting lights and colors from other objects about it. A Wedgwood vase of soft cream in chaste and classical lines, or a flower basket of Italian faience would make a handsome cen-

terpiece under a mirror, on a table, or perhaps on the mantelpiece. An Italian pottery pitcher of an Alice blue provides a stunning setting for a mass of golden rod, autumn leaves, or golden glow.

### Venetian Glass Used.

An attractive table setting may be created by using a shallow Venetian plate in wistaria, filled with artificial fruit, as a centerpiece, on hand-embroidered Italian linen. At symmetrical positions one may stand four deep blue pottery vases, filled with glass or parchment flowers. Then provide each guest with a serving plate of Venetian glass in wistaria, and see if there are not many exclamations of pleasure and delight.

### LAPIS AND AMETHYST.

Earrings continue in favor, and competing with coral and jade, we find lapis and amethyst in increasing numbers.

### PAISLEY AND SERGE.

Nothing adds more pep to a serge

or twill frock than the lavish use of Paisley silk which features red. This is one of the most successful combinations of the year.

### PARIS CORSETS.

Some recent corset importations from Paris are made of most elaborate fabrics with higher tops and a more definite waistline than have been seen in many a day.

### FOR EVENING.

A combination frequently noted in evening frocks is flame and blue. Canary yellow is one of the color leaders in chiffon gowns.

### FUR ON FROCKS.

Fur is lavishly used on evening frocks of chiffon and the most lightweight fabrics. Fox, sable and mine are the furs most adapted for such uses.

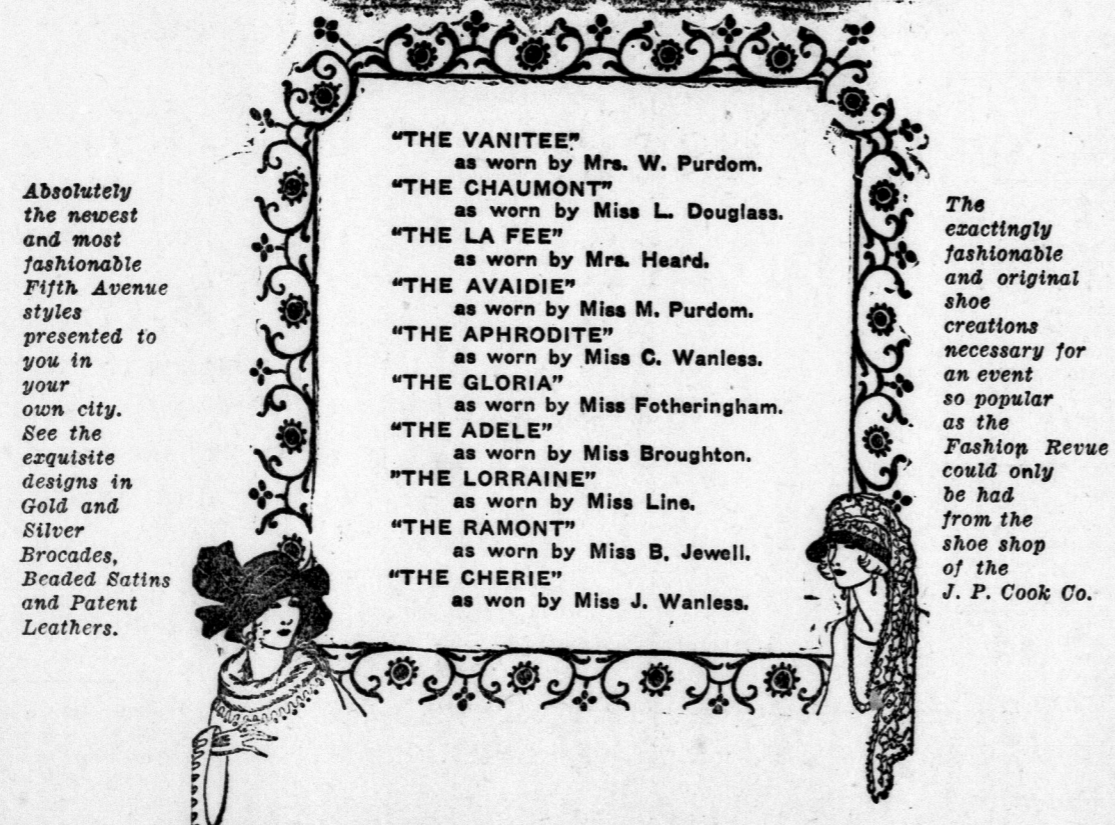
Since the Chinese never kiss may have gotten slant-eyed looking at their noses.



## Footprints on the Pathway of Style



The London Advertiser Style Revue  
AUSPICES I. O. D. E.  
FEATURES BEAUTIFUL SHOES  
By THE J. P. COOK CO.



WITH COOK'S BEAUTIFUL SHOES  
you have that satisfaction of mind that your feet are properly and fashionably fitted, for our buyer is at all times awake to the many changes in style of milady's wearing apparel, and therefore is in a position to exact the newest and most fashionable footwear from the most exclusive manufacturers in America. An attractive display of fall footwear now on exhibit in our windows.

The J. P. COOK CO., Ltd.  
"BEAUTIFUL SHOES"

## Style Leadership Is Assured By

# "Artistic" Exclusive Fashions

The ever-increasing popularity of our style selections among the smarter dressed women is ascribable to the first showing, always of modes in strict accord with the trend of New York and Paris fashions. Artistic, aristocratic, individual models, made in elegant quality materials, in new effects, whose beauty will delight you.

### New Coats and Wraps

were never more beautiful. Richest new garments of surpassing materials, which include Bolivias, the new velvet-like Duvetyns, Broadcloths, Velours and English Tweeds; some embroidered or trimmed with rich fringe; others cut on the more conservative lines; trimmed with the choicest of beaver, sable and novelty furs.

\$25 to \$100

### Distinguished Tailored Suits

Supreme tailoring, whether enriched with furs or other trimmings. The materials are the finest of French tricotines, duvetyns, broadcloths and velours. Navy continues to be Fashion's favorite, and there are the new shades of browns and reindeer. All sizes to 46, and priced exceptionally low.

\$35, \$45, \$55

### The New Fall Frocks

The straight-line model, unfailingly becoming to every figure and age, is still the vogue this fall. You will find it in the uneven hemline and panel effects in frocks of crepe satins, canton crepe and georgette crepe. Some are smartly tailored; others with tucks, new sleeves and girle effects. Black, navy and brown are the most popular colors.

\$20 to \$50

### The New Fur Coats

Our complete and exclusive stock of Fur Coats afford milady and miss selection from the smart modes, superb peltry and wide assortment. You will find selections can be made now at most attractive pricings.

\$65 to \$385

See our many garments displayed at the Autumn Fashion Show, Grand Theatre all week, October 2nd to 7th, inclusive.

ARTISTIC  
LADIES WEAR CO.  
211 DUNDAS ST. LONDON.