

"SUNSHINE LAND AND PROSPERITY"

WE are placing on the market 3,000 acres of Truck Garden Land, and are offering it in 5, 10, 20, 30 and 40-acre tracts. This land is located 18 miles from the city of Wilmington, North Carolina, and only 1 1/4 miles from Edgecombe Station, on the Atlantic Coast Line Railway. Good schools, good roads, churches of almost every denomination—and the finest climate in the United States—make this an ideal location for settlement. We own in fee about 100,000 acres of virgin land; but only 3,000 acres will be sold on this proposition.

The land is geologically known as the "Portsmouth Type," and has from four to nine feet of humus on it. The U.S. Department of Agriculture says of this land:—"It is one of the richest areas of undeveloped wealth in the United States." Ten acres of this land will produce more profit than eighty acres of northern corn or wheat land will.

In early vegetables, the district is as famous as for its strawberries, and all crops meet big profits, not only because the vegetables are early, but because you can grow from three to six crops a season.

Men on small farms make a living and from \$1,000 to \$1,500 a year besides. Some get as much as \$1,000 an acre just from the early vegetables.

There are other trucking sections in the South, but we are within 36 hours' freight service of New York, Philadelphia, Baltimore and Washington.

Here is our offer; and remember, it applies only to 3,000 acres; only 300 ten-acre buyers can possibly take advantage of it.

For every \$100 you pay on your land, you will receive one preferred share (\$100 par) of the Holly Shelter Land Company, drawing 7% dividends.

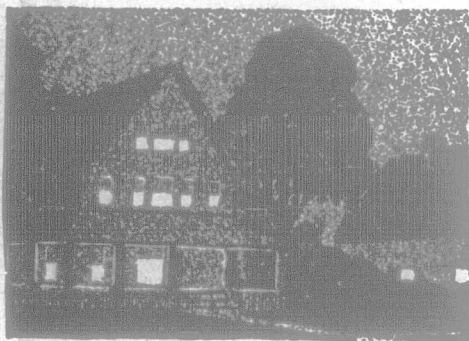
You have seen "money back guarantees" before. The best of them offered to give you your money back if you were not satisfied. This "money back guarantee" of ours gives you your money back whether you are satisfied or not.

If you wish to take advantage of this great offer, do so at once, as it will positively close when 3,000 acres are sold.

Perfect title, perfect guarantee, highest references.

Send to-day for descriptive booklet which gives full information. It is free.

The Holly Shelter Land Co.
5 to 9 Randolph St.
DETROIT, MICH.



Why Fill Lamps and Pump Water?

These drudgeries are no longer necessary. You can light your home and barn with electricity and have running water in bath and stable by installing the economical

Home Electric and Water System

Costs only 20c. a week to operate. Very easy to install. Write for our special price and terms of payment.

THE HOME ELECTRIC LIGHT & WATER SYSTEMS
Welland, Ont.

The Excelsior Life Insurance Co.

Incorporated 1889

Assets nearly
\$3,500,000.00



Excelsior's liberal up-to-date policy contracts. The best for protection, for investment or to provide a fund to liquidate mortgages, etc.

Absolute Security, Liberal Profits
Company being foremost in all desirable features

Desirable vacancies for agents to devote either entire or spare time to work. Apply to any branch office, or to:

HEAD OFFICE, TORONTO

Two dollars for Automatically Adjusting Milking Stool, Canadian patent. Write F. K. CRUMB, Patentee, Manila, Philippine Islands, or procure from Schofield-Holden Machine Co., Toronto.

There is nothing like a "Tea Pot" test at your own table to prove its sterling worth!

"SALADA"

TEA "Always and Easily the Best"
BLACK, GREEN, or MIXED. Sealed Airtight Packages Only

The Sign of a Good Dairy Farmer

WE USE THE
DE LAVAL
Cream Separator

There are more than a million such signs on the best farms the country over. They are almost invariably a badge of prosperity and practical progressiveness. They are a most impressive object lesson to the farmer who hasn't one. They point the sure way to better things in dairying.

Where there's a De Laval user without a De Laval User's Sign, a new enameled sign will be gladly sent him free of all cost.

Where there's a dairy farmer—big or little—without a De Laval Separator, the De Laval User's Sign—that badge of prosperity and progressiveness—will come to him with his separator.

Why not buy a De Laval Separator now? Try one anyway, through the local agent, and satisfy yourself. This will cost you nothing and may save you much. There never was a better time to make so important and self-paying an investment than right now—and the "sign of a good dairy farmer" goes with it.

DE LAVAL DAIRY SUPPLY CO., LTD.,
MONTREAL PETERBORO WINNIPEG VANCOUVER

GRAND TRUNK SYSTEM NEW SERVICE

—BETWEEN—
TORONTO—SARNIA—SAULT STE. MARIE
PORT ARTHUR—FORT WILLIAM—WINNIPEG
STEAMBOAT SPECIAL —Effective June 7th
Westbound

Lv. Toronto, G.T.R.	10.45 a.m.—Mon. Wed. Sat.
" Hamilton, "	11.53 a.m.—" " "
" London, "	2.18 p.m.—" " "
" Sarnia Wharf, Nor. Nav. Co.	4.15 p.m.—" " "
" S. S. Marie, Ont. Nor. Nav. Co.	11.30 a.m.—Thurs., Sun.—3.00 p.m. Tues.
Ar. Port Arthur, Nor. Nav. Co.	7.30 a.m.—Mon., Fri.
" Fort William, Nor. Nav. Co.	9.00 a.m.—Mon., Fri.—2.30 p.m. Wed.
" Winnipeg, G.T.P. Railway	7.45 a.m.—Tues., Thurs., Sat.

Parlor-Cafe, Parlor Cars and First-class Coaches between Toronto and Sarnia Wharf. Standard Sleeping Cars (electric lights in lower and upper berths), Colonist Sleeping Cars (berths free), Dining Car and Coaches between Fort William and Winnipeg.

Commencing June 16th, a through electric lighted Standard Sleeping Car will be operated between Fort William, Winnipeg, Saskatoon and Edmonton.

This is the inauguration of Grand Trunk Lake and Rail Route Service between Eastern and Western Canada.

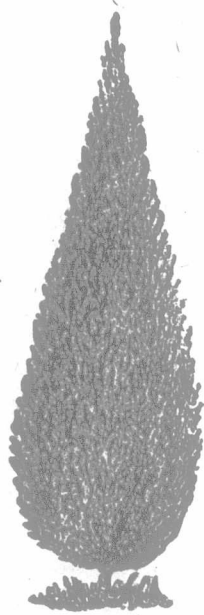
A Special Train will run the reverse way—from Sarnia Wharf to Toronto, commencing June 8th, and each Tuesday, Friday and Sunday thereafter.

Full particulars, Reservations on Steamers or Trains, may be obtained on application to Grand Trunk Agents, or write

C. E. HORNING, D.P.A.
Union Station, TORONTO, ONT.

Evergreens FOR Everyone

We have the largest stock in Canada of Evergreen Ornamental Trees and Shrubs. Thousands and tens of thousands of Spruce and Arbor Vitae for windbreaks and hedges at prices within the reach of everyone.



IRISH JUNIPER.

We have the stately Irish Junipers and Pyramidal Arbor Vitae, which are well suited for planting on lots in cemeteries or for single specimens on the lawn. Write for prices and information which is always furnished cheerfully and promptly.

E. D. SMITH & SON, Ltd.
(900 Acres)
WINONA, ONTARIO

JUNE

Is the half-way post for every year. It is a good time to strike a balance in your own personal assets and liabilities. How many of us would find our balance on the right side? Many of us who thought we were amply fortified against need would find that we were not so secure as we ought to be. The easiest, safest and quickest method of increasing your credit balance is by taking out Life Insurance. The most popular and up-to-date policies, free from all unnecessary red tape and restrictions, are issued by

The Federal Life Assurance Company of Canada

Head Office: Hamilton, Ont.

"GOES LIKE SIXTY" TRACTOR

With All Latest Improvements
The economical, practical tractor for modern farming. Light in weight, strong and powerful, easy to operate. The real one-man tractor for belt or field work.

Special Heavy Duty Tractor Motor
Long stroke type. Large crank shaft, connecting rods and bearings. One-piece cam shaft. The Gilson is the pioneer light-weight tractor and no experiment. Will do any kind of farm work more cheaply than horses.

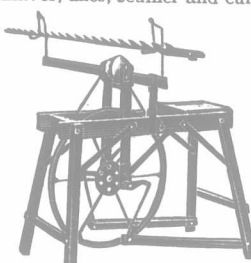


GET OUR CATALOG FREE

Learn about the new Gilson before you buy a tractor. Write GILSON MFG. CO., 3 York St., Guelph, Canada.

The DAISY Grinder

The greatest labor-saving grinder ever placed on the market. All made of steel. As a foot-power grinder it has no equal for grinding chisels, drill-bits, knives, axes, scuffer and cultivator points, and all kinds of grinding that is required in a shop or on a farm.



PAT. DEC 15TH 1908

Mfd. by W. J. MANDLEY, SHELBURNE, ONT.