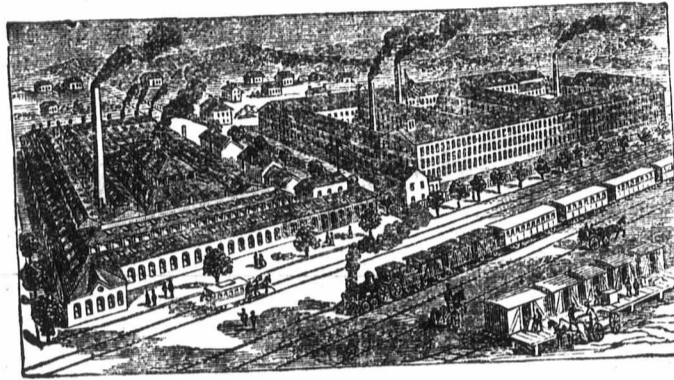


FARMER'S ADVOCATE.

GREAT REDUCTION.

WHEELER & WILSON'S SILENT MOTION SEWING MACHINES.

OVER
HALF A MILLION
SOLD IN
All Parts of the World.



Wheeler & Wilson Sewing Machine Manufactories, Bridgeport, Conn.
Front 368 ft., Depth 307 ft. Front 527 ft., Depth 219 ft.

THESE MANUFACTORIES
Are now capable of turning out over
120,000 MACHINES!!!
PER ANNUM.

Hitherto the facilities of the Wheeler & Wilson Manufacturing Co., great as they were, have been inadequate to supply the unprecedented demand of this favorite Machine. Recent extensive additions to the Company's manufacturing resources, however, enable them now not only to supply the demand of the world, but at a much cheaper rate. The public in Canada will now reap the benefit of these changes, and it is expected the present large reduction will increase the sale still more extensively.

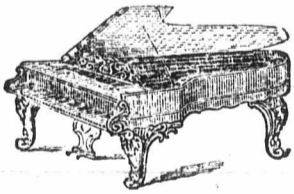
Remember the chief points of excellence of this Machine. ITS REMARKABLE SIMPLICITY OF CONSTRUCTION, MAKING THE LOCK STITCH WITHOUT A SHUTTLE, HAVING ABOUT HALF THE FRICTION AND MOVEMENTS OF ANY SHUTTLE MACHINE IN THE WORLD. Hence its Great Durability, Quiet Movements, Easy Running and Speed. CATALOGUE AND REDUCED PRICE LIST POST FREE TO ANY ADDRESS.

G. A. WALTON, GENERAL AGENT,
54 JAMES ST., HAMILTON,
85 King Street West, TORONTO. 71-6-6i 37 Spark Street, OTTAWA.

Anglo-American Hotel,
KINGSTON, CANADA,
E. MILSAP & CO., Proprietors.

THE Proprietors take pleasure in informing their friends, and travellers either for pleasure or on business, that they have newly furnished this elegant Hotel, where they will find every comfort and accommodation. Guests will find this the most pleasant and desirable stopping place in the City,
71-4

PIANOS! ORGANS.



HEINTZMAN & CO.

Have taken all the Prizes and Diplomas for Pianos at Provincial Exhibitions of 1870, 1868, 1867, and every where when they have competed.

We invite comparison with the imported Pianos; AND BUYERS SAVE THE DUTY.

Sole Agents for Taylor & Farley's celebrated ORGANS, which have gained prizes over those of leading manufacturers in Boston, New York and Buffalo.

CALL EXAMINE THE STOCK
Note the address— HEINTZMAN & CO.,
115 & 117 King St. West,
TORONTO.

Emporium Price List for Aug.

FALL WHEAT.

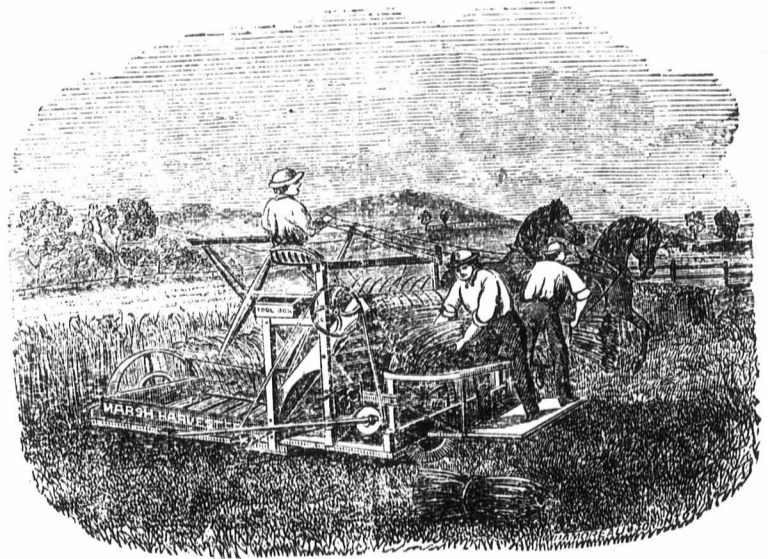
Mediterranean, American Amber or Midge Proof, Dichl, Treadwell, Weeks, Boughton, Scott and Soules, the best we can procure, from \$1.25 to \$2 per bushel, depending on cost, purity, variety and quality required. Orders must be in early.

STOCK.

4 Durham Bulls, from 4 to 12 months old.
Cotswold Rams, Lambs and Shearlings.
Leicester Rams, Lambs and Shearlings.
Breeding Ewes, Leicesters or Cotswolds, for exportation. Prices to suit applicants, either for prize-takers or for stock purposes, varying from \$6 to \$200 per head. State your requirements, and we will guarantee satisfaction to our customers, or will not fill the order.

IMPLEMENTS.

Carter's Patent Ditching Machine, improved, \$130.
Collard's Harrow, \$12.
Howard's Improved Harrow, \$22 to \$24.
Lawn Mowing Machine, \$25 and upwards.—Send for Circular.
Seed Drills, \$5 to \$70.
Taylor's Burglar and Fire Proof Safes, from \$35 to \$375.
Jones' Amalgam Bells, for Churches, Factories, School Houses and Farms. From 16 to 36 inches diameter, \$10 to \$130, with yoke and crank, or yoke and wheel.
Stump Extractor, \$50, \$75 and \$100.
Paragon Grain Crusher, \$30, \$35 and \$40.
Lamb's Knitting Machine, \$30 to \$75.
Hinkley's Knitting Machine, \$30 to \$50.
Tumbling Churn, \$4, \$5 and \$7.
The celebrated Blanshard Churn.
Dana's Patent Sheep Marks, with name and number, \$3 per 100. Punches, \$1.25. Bound Registers, 50 cents. Sheet Registers, 8 cents.
Clark's Cultivator. It is of light draft, very durably constructed, and does the work completely. Price \$34.
Plowman's Patent Hardened Metal Plows, \$14 to \$16.
Good Horse Powers, \$50. Do with Wood Sawing Machine, complete, \$95. Best made.
Walsley's Potato Digger, with mould board, for drilling, earthing up and digging. \$16, \$20.



THE MARSH HARVESTER

THE BEST REAPER EXTANT,

Weights ONLY 790 POUNDS and is the lightest draft Reaper made, cutting Five Feet Swath.

Awarded 1st Prize and Diploma at London, 1869; 1st Prize, Field Trial, Indiana, 1870; 1st Prize, West Branch Agricultural Exhibition, 1870; 1st Prize, Field Trial, St. Louis, U. S., 1870; 1st Prize, Field Trial, in Hungary, Europe, 1870.

WARRANTY.—The Marsh Harvester is warranted to be of light draft, and to cut Grain in a workman-like manner—equal to the work done by any other Reaper.

Every purchaser will be allowed to work the Machine in Grain one-half day on trial; and in case anything proves defective, due notice must be given us, or the Agent from whom it was bought, and time allowed to send a person to put it in order. If then the Machine can not be made to work from fault in itself, it may be returned, and the money will be refunded. If immediate notice is not given after trial, the Machine will be considered accepted.

For Testimonials and full particulars, address

PAXTON, TATE & CO.,
Port Perry, Ont.

71-6-3i

SMITH'S
AGRI

IMPL

One, Two
Thrashi

With recent imp
now makes

H.

Hors

The above is
Saving Machines
Grain, and, altho
coming into gener

CULT

They are ad
them to be the b
the kind known.

The Wheel
and lower inde
set to any depth
can be removed
The Teeth are
structed as to be

F

MOWI

The celebr
ing Machines.
Farmers to be
ing Machine y

WOOD

The subs
turists and Fa
assortment of
which he offer

Lowes

FAVORAB

These Mac
ments, and a
ER EASE
WORK than
Machine. T
and Workma

Extrem

They are r
of Machines
every satisf

F A

Invited

Orders sent

St. Ga

June, 187