

Issued Each Week—Only One Dollar a Year

VOL. XXVIII

NUMBER 10

# FARM AND DAIRY

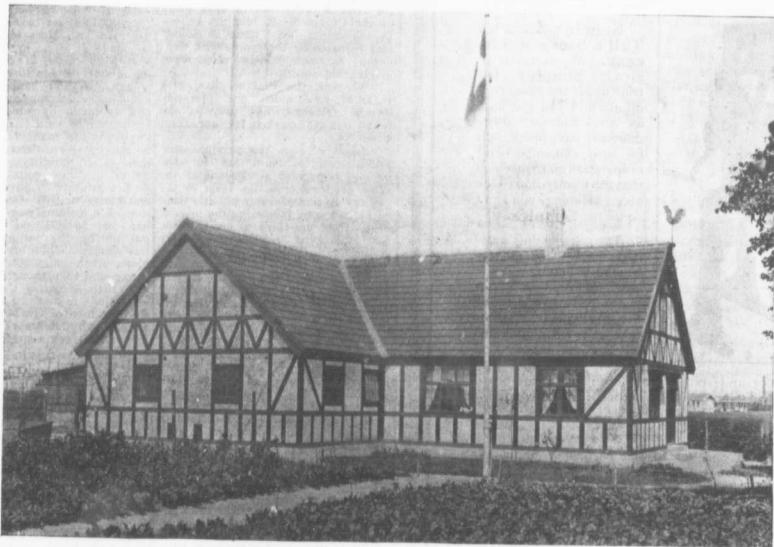
AND

# RURAL HOME

General J. H. CEF 15

PETERBORO, ONT.

MARCH 11 1909



A MODEL FARM HOUSE IN A COUNTRY FOR WHICH CO-OPERATION HAS DONE MUCH  
Co-operation has been extended to every line of agricultural effort in Denmark. There are co-operative cow-testing associations, co-operative breeding associations, co-operative creameries, co-operative butter-selling associations, co-operative egg export associations, co-operative pork packing associations, co-operative insurance associations, and numerous other organizations of a like nature. There are many lessons for Canadians in the successes of Danish methods.

DEVOTED TO  
**BETTER FARMING AND**  
**CANADIAN COUNTRY LIFE**