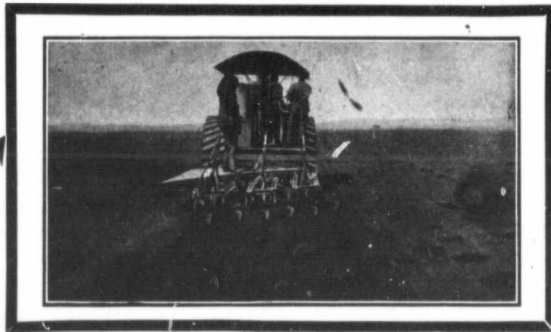


How Can I Convert Raw Prairie Into a Seed Bed

In the shortest possible time is the eternal question among Western farmers—
except those who own and operate a

HART-PARR GAS TRACTOR

Recently a gas engine publication in discussing the gas tractor proposition called it "The First Successful Gas Tractor." The term "First" can never be taken away from it and the term "Successful" is backed up by such efficient service rendered thousands of satisfied customers, that it is more than a mere term applied to it by any one or any publication. It is an absolute fact—a fact that is safely entrenched behind years of service and the largest gas tractor factory in the world.



Specifications

DRIVING WHEELS. 66 inch diameter, 24 inch face. Our wave form driver cleats make the bearing power of these wheels equivalent to a 32-inch width wheel of the usual construction. The only perfect driver cleat for use on plowed ground for discing and seeding. Wheels built up entirely of steel, cleats riveted to tire. The most substantial, satisfactory driving wheel built. Rear axle 5 in. diameter of open hearth steel.

CONNECTING RODS. Steel drop forgings of I section. Studs for caps of 1 inch Vanadium steel.

IGNITION. "Jump Spark" ignition with two sets of dry batteries, and "single spark" induction coils, — the most efficient battery spark coil made.

RATINGS. Guaranteed to easily deliver 45 brake horse power all day. Every engine tested up to at least 60 brake horse power before it leaves the works. Guaranteed to pull the same load, on firm, level footing, as twenty-two ordinary work horses. Most of our customers are doing the work of 25 to 30 horses with these tractors; will actually deliver 35 to 40 "draw-bar horse power." We rate them conservatively so that purchasers will always find they do better than we claim for them.

RATE OF TRAVEL. 2.3 miles per hour. Compare this with the 2 miles per hour of other gas tractors; and consider what this higher rate of travel means when plowing on loose, loamy soil, or discing, seeding and harvesting.

SPRING BREAKING

With a big tract of land to be cultivated and with only horses to do the work, the problem of getting the most done in the shortest possible time is a serious one. Then, too, there is the question of reliable farm labor, always hard to get and always expensive.

Wouldn't a farm tractor, that will do the work of **Five Men and Twenty-five Horses**, interest you, when all that is required to operate it is one man and a supply of gasoline or kerosene.

The above is a sample of what the **Hart-Parr Gas Tractor** will do. Its success on thousands of farms has demonstrated that it is more than a substitute for the horse.

We would like very much to tell you about our Engine for we are confident that we can put you in the way of doubling the output of your farm in 1911, and at the same time decrease your operating expenses.

Would that mean anything to you as a Farmer? If so, write us and we will cheerfully tell you what this "**Modern Farm Horse**" can do on the Farm.

Specifications

CYLINDERS. Two horizontal cylinders, 10 in. bore, 15 in. stroke. Speed 300 R. P. M. A long stroke, moderate speed motor,—the most efficient kind, and the one that wears longest. Cylinder heads, hemispherical in shape, and cast with the rest of cylinder, hence no packed joints. Valve cages ground to seats,—no packing there.

CRANK SHAFT. A pressed steel forging, of high tensile strength,—annealed and oil tempered, — tough and dependable. Diameter of crank shaft in the bearings, 4 in., diameter of crank pins 4 1/2 in. Crank shaft offset 2 inches from center line of cylinders, adding to the efficiency of engine, decreasing wear of cylinders and pistons, and making engine very easy to start.

GEARS. Every gear of steel or semi-steel; we use no cast iron gearing. Planetary reverse gears are drop forged with machine cut teeth. Our planetary reverse makes it possible to use a single operating lever,—the only way it can be done.

BEARINGS. Main crank shaft bearings and crank pin bearings made in the form of half bushings, (easily replaceable, and of special composition of high grade babbitt, copper and aluminum; one of the best anti-friction metals and exceedingly tough. All other bearings of the best grade of babbitt or phosphor bronze.

LUBRICATION. Force feed lubrication to cylinders, connecting rods and crank shaft bearings, besides spray lubrication in enclosed crank case. Force feed lubrication to gear train.

THE ORIGINAL KEROSENE TRACTOR

PRICE \$2,800.00 F.O.B. PORTAGE LA PRAIRIE

We have been Building Tractors for Nine Years and Kerosene Tractors for Five Years. Our new Illustrated Catalog describes it — it will interest you. Write for it today

HART-PARR CO., 28 Main Street Portage la Prairie, Manitoba
THE CHAPIN CO., Agents for Alberta