

under-arm gores. The fronts are gathered at the neck and seven moderately wide tucks extending from each shoulder end at the bust, the fulness being collected in shirrings at the waist-line and puffing out very slightly over a wrinkled ribbon belt that is closed at the left side of the front under a stylish bow having long ends. A frill of embroidered edging rises from the collar, which is encircled by a ribbon stock, and a frill of edging extends down each side of the closing. The sleeves are exceedingly novel in effect: they fit smoothly to above the elbow and then flare in a handsome short puff that is arranged in a group of downward-turning tucks from the inside seam nearly to the back of the arm.

The costume has many original features, the sleeves especially giving an air of novelty. It will make up charmingly in the dimities, lawns, organdies, plain or dotted Swisses and other sheer textiles that are obtainable in a host of varieties. Summer silks will also be used and to trim any of these materials lace edging and insertion will be combined with ribbon.

We have pattern No. 9126 in ten sizes for ladies from thirty to forty-two inches, bust measure. For a lady of medium size, the costume requires eleven yards and three-fourths of material twenty-two inches wide, with three yards and a half of edging two inches and a half wide for the collar frill and front frills. Price of pattern, 1s. 8d. or 40 cents.

LADIES' COSTUME, WITH EIGHT-GORED SKIRT.

(For Illustrations see Page 645.)

No. 9159.—The costume is particularly charming as here made up in figured organdy with a lavish decoration of ribbon and lace edging, the edging being used alone and on ruffles of the material. The eight-gored skirt is gathered at the back and hangs with a graceful flare toward the lower edge, which measures four yards and three-eighths in the medium sizes. A bustle or other skirt-extender may be worn.

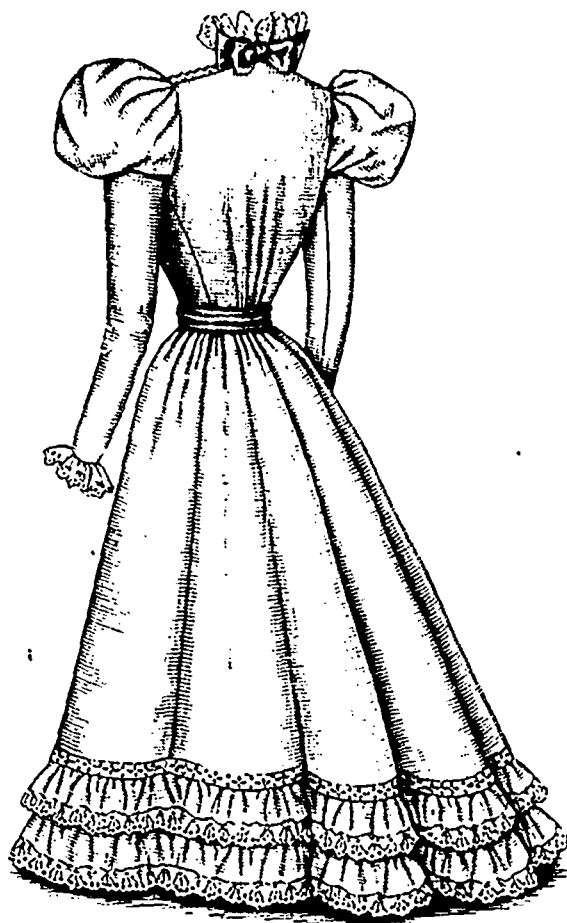
A lining fitted by double bust darts and the usual seams and closed at the center of the front supports the fanciful waist, which has a back that is smooth at the top and has slight fulness below gathered up closely at the waist-line. Under-arm gores give a smooth effect at the sides. The fronts close at the left side in Russian style, the left front being narrow with only a trifle of fulness gathered at the waist-line, while the wide right front is gathered at the neck and waist-line and puffs out stylishly. A frill of ribbon between two lace-edged ruffles of the material is adjusted over the closing.

The standing collar has a graduated frill rising from it and is covered with a ribbon stock. The coat sleeves have short mushroom puffs at the top, the puffs standing out well under double frills.

Such a costume will be most pleasing when made of sheer ma-

terials over tinted linings of percaline or silk, but soft silks and light-weight woollens could also be used with good effect. The mode invites profuse decorations of lace, ribbon, fancy bands, etc.

We have pattern No. 9159 in ten sizes for ladies from thirty



9126

Side-Back View.

LADIES' COSTUME, CONSISTING OF A SIX-GORED SKIRT AND A WAIST THAT MAY BE MADE WITH OR WITHOUT FITTED BODY-LINING.

(For Description see Page 641.)

to forty-two inches, bust measure. For a lady of medium size, the costume calls for fifteen yards and an eighth of goods twenty-two inches wide. Price of pattern, 1s. 8d. or 40 cents.



9126

Side-Front View.

FIGURE NO. 224 W.—LADIES' STREET TOILETTE.

(For Illustration see Page 646.)

FIGURE NO. 224 W.—This consists of a Ladies' jacket, vest and skirt. The jacket pattern, which is No. 9170 and costs 1s. or 25 cents, is in seven sizes for ladies from thirty to forty-two inches, bust measure, and is shown again on page 648. The skirt pattern, which is No. 9166 and costs 1s. 6d. or 85 cents, is in seven sizes for ladies from twenty to thirty-two inches, waist measure, and is again portrayed on page 668. The vest pattern, which is No. 1342 and costs 10d. or 20 cents, is in seven sizes for ladies from thirty to forty-two inches, bust measure, and is also shown on page 662.

A very elaborate braid decoration is illustrated on this handsome toilette of green cloth; fancy olive buttons supplement the braid decoration and the effect is softened by a vest of

(Descriptions Continued on Page 645.)