

Doe Lake .....	June 1	WEST MANITOULIN—	
Emsdale .....	" 2	Grimesthorpe .....	June 13
Sundridge .....	" 3	Billings (Kagawong) .....	" 14
South River .....	" 5	Gordon's .....	" 15
Rye .....	" 6	Barrie Island .....	" 16
Powassan .....	" 7	Poplar .....	" 17
Trout Creek .....	" 8	Silver Water .....	" 19
Granite Hill .....	" 9		
Golden Valley .....	" 10	ST. JOSEPH ISLAND—	
Arnstein .....	" 12	Marksville .....	June 22
Loring .....	" 13	Stone .....	" 23
		Kentvale .....	" 24
		Richard's Landing .....	" 26
EAST NIPISSING—		Division 20.—Miss B. Duncan, Toron-	
Calvin .....	June 15	to; David James, Thornhill.	
Mattawa .....	" 16		
TEMISCAMINGUE—		WEST NIPISSING—	
Haileybury (Buche Tp.) .....	June 19	Lee Valley .....	June 1
New Liskeard .....	" 20	Webbwood .....	" 2
Milberta .....	" 21		
Hillview .....	" 22	EAST ALGOMA—	
Uno Park .....	" 23	Walford .....	June 3
Hanbury .....	" 24	Iron Bridge .....	" 5
Thornloe .....	" 26	Sowerby .....	" 6
Earlton .....	" 27	Livingstone Creek .....	" 7
Hilliardton .....	" 28	Little Rapids .....	" 8
Tomstown .....	" 29	Alma Heights .....	" 9
Heaslip .....	" 30	Cloudslee .....	" 10
Charlton .....	July 3	Port Lock .....	" 12
Englehart .....	" 4		
Clover Valley .....	" 5	NORTH SHORE ALGOMA—	
		Desbarats .....	June 13
Division 19.—Mrs. M. Woelard, Toron-		McLennan .....	" 14
to; *Anson Groh, Preston.		Lidstone .....	" 15
EAST MANITOULIN—		Bar River .....	" 16
Little Current .....	June 1	Sylvan Valley .....	" 17
Sheguindah .....	" 2	Echo Bay .....	" 19
Green Bay .....	" 3	Garden River .....	" 20
Budges .....	" 5	CENTRE ALGOMA—	
Manitowaning .....	" 5	Tarentorus .....	June 21
Hilly Grove .....	" 6	Base Line .....	" 22
Tehkummah .....	" 7	South Prince .....	" 23
South Baymouth (women)	" 8	West Korah .....	" 24
aft. .....	" 8	Goulais Bay .....	" 26
Sandfield (men, aft.), joint	" 8	WEST NIPISSING—	
evg. meeting .....	" 8	Warren .....	June 28
Silver Bay (Big Lake) .....	" 9	Sturgeon Falls .....	" 29
Mindemoya .....	" 10	Woodlands .....	" 30
Carnarvon .....	" 12		

Division 21.—Miss G. Gray, Toronto; Mr. Henry Grose, Lefroy.

#### THUNDER BAY—

West Fort William .....	June 2
Port Arthur .....	" 3
Slate River .....	" 5
Hymers .....	" 5
South Gillies .....	" 6
O'Connor .....	" 7
Conmee .....	aft. " 9
Kakabeka Falls .....	eve " 9
Murillo .....	" 10
Dorion .....	" 12
Ouimet .....	" 13

#### WABIGOON—

Barclay .....	June 15
Dryden .....	" 16
Glenogland, S. H. .....	" 17
Oxdrift .....	" 19
Mannitaki .....	" 20
Eagle River .....	" 21

#### KENORA—

Kenora .....	June 22
Jaffray .....	" 23

#### RAINY RIVER—

Sleeman .....	aft. June 27
Stratton .....	" 28
Shenston .....	aft. " 29
Barwick .....	" 30
Klondyke .....	aft. July 3
Emo .....	" 4
Barnhart .....	" 5
Big Fork .....	aft. " 6
Devlin .....	eve. " 6
Burriss .....	" 7
Isherwood .....	aft. " 8
Crozier .....	eve. " 8

### Kingsville Anniversary

THE Kingsville Branch of South Essex Women's Institute celebrated their third anniversary on Feb. 25th by an oyster supper for the members and their husbands. About two

hundred ladies and gentlemen were present. After supper a splendid programme was given by the members. It consisted of readings, recitations and music.

Mrs. J. H. Coatsworth, the president, gave a splendid address on "Institute Work." This paper will be published in full in the columns of the CANADIAN HOME JOURNAL.

### Mrs. Hoodless Memorial

THE amount donated to the Mrs. Hoodless Memorial Fund, up to and including April 1st, was \$411.51. The March contributions were: Preston, \$2; Milverton, \$2; Central Dumfries, \$1; Jamestown, 15c; Damascus, \$1.20; Phelpsston, 50c; Murillo, \$1.15; Beachville, \$1.50; Minden, \$1; Weston, \$1; Hymers, 50c; Gordon, \$1.60; Plattsville, \$2; Marden, 50c; Avening, 85c; Melrose, \$2. Campden (Union), \$2.50; Shetland, 50c; Desbarats, \$1.50; S. Macaulay, \$2; Dromore, \$1.50; Sonya, \$1; Conway, \$1.10; Bowen Road, 80c; Eugenia, \$1.25; Fort Stewart, \$1.00; Starkville, \$1; Victoria Square, \$4.85; Mimico, \$2; Mitchell, \$1.30; Wilton Grove, \$3; Conmee, \$1.50; Georgetown, \$3; Irwin, \$1; Bowling Green, \$1. Burford, \$2; Seeley's Bay, 35c; Colbeck and Monticello, \$2; Glanford, \$1.95; Tara, \$1.15; Antrim, \$1.00; Sheffield, 75c; Fenelon Falls, \$1.02; St. Jacobs, \$2; Hepworth, \$1.30; Aberarden, 50c; Merrickville, 90c; Brunel, 60c; Palermo, \$2; Lyons, 40c; Brampton, \$2; Botany, \$1; Drumbo, \$1.60. Castleton, \$2; Vandeleur, 80c; Hillsburg, 80c; Stella, \$2; Emo, \$1.50; Uno Park, 75c; Port Credit, \$2; L'Amable, 25c; MacLennan, \$2; Mount Pleasant, 50c; Meaford, \$1.20; Tavistock, 90c; Kilbride, \$1.50; Blyth, 80c; Ayton, \$5; Hillview, \$1.50; Delta, 35c. Gosfield, 50c; Quinte, \$2; Grimsby, \$1; Kemble, \$1.80; Ethel, \$1; Manitick, \$2; Streetsville, \$1.30; Strathroy, \$1; Creemore, 85c; York Road, \$2; Rockwood, 80c; Warren, \$2; Mount Julian, \$2.05; Freelon, \$1.70; Teeswater, 75c; Mount Hamilton, \$1.20; Onondaga, \$1.45; Pelham Centre, 50c; Milberta, \$1.35; Richard's Landing, \$1.10; Cathcart, \$1; Humberstone, \$1; Cherry Valley, \$2; Millbank, \$1.35; Queensboro, \$1; Allenwood, \$1.25; Foxboro, \$2.

### Two Meetings at Brussels

THE February meeting of the Brussels Branch of Women's Institute was held in Mrs. N. B. Gerry's pleasant parlors. President Mrs. John Robb was in the chair.

Mrs. D. B. Moore read a splendid paper on "The Evils of Fault-finding." She advised us to look to home, as it is better to find out one fault of our own than ten of our neighbors. Her paper gave excellent instruction from start to finish to guard against this evil habit.

Miss Stella Gerry rendered a piano solo, which was much appreciated. Miss Hazel Lowery gave a humorous reading, entitled, "Entertaining the New Minister," which was quite amusing.

Miss Nora Maunders read a carefully prepared paper on "How To Live Within One's Income," showing that the first essential is the laying down of rules by which we govern that income, as the happiest homes are those that are systematic. Miss Maunders advocated the keeping of a carefully itemized account of expenses, and the setting aside of a part of our income for certain uses, as in this way we soon find out how much it is costing us to live, and how much we can save.

Miss Gerry, with Miss Pryne as accompanist, favored us with a well-rendered solo.

At the March meeting Mrs. (Dr.) Oaten gave an instructive and deeply interesting address on "The White Slave Traffic." Mrs. Oaten is a pleasant, fluent speaker, thoroughly master of her subject, and those who were privileged to hear her will never forget her discourse on this theme, and the strong appeal she made to mothers at the close.

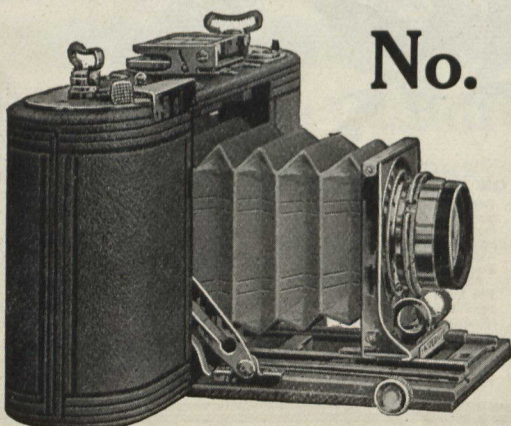
The meeting was enlivened at different stages by instrumental duet by Mrs. Thomson and Miss McLaughlin; solo by Miss Marjory Strachan; instrumental by Miss Bryans, and recitation by Miss Alice Wilton. The ladies of the Institute served a liberal supply of confectionery at the close. A cordial vote of thanks was passed to Mrs. Oaten for her splendid address, and a resolution of sympathy to Mrs. D. Robb in connection with the demise of her highly esteemed husband.



FROM 1A SPEED KODAK NEGATIVE

## Get Action

Speed pictures—pictures of the ninety mile auto, the running horse, birds on the wing, the limited express, snap-shots on cloudy days and even indoors—all these are in the everyday work of the new Speed Kodak—the camera that meets the most exacting conditions, yet retains the Kodak convenience.



## No. 1<sup>A</sup> Speed Kodak

FOR 2½ x 4¼ PICTURES

Fitted with Graflex Focal Plane Shutter for exposures from 1-1000 of a second to slow "instantaneous" and for time exposures. Zeiss-Kodak Anastigmat lens f.6.3. Loads in daylight with Kodak Film Cartridges and can be carried in an ordinary top-coat pocket. A superior camera in every detail of plan, construction and finish.

PRICE \$60.00

CANADIAN KODAK CO., Limited  
TORONTO, CANADA

Catalogue free at the dealers or by mail.