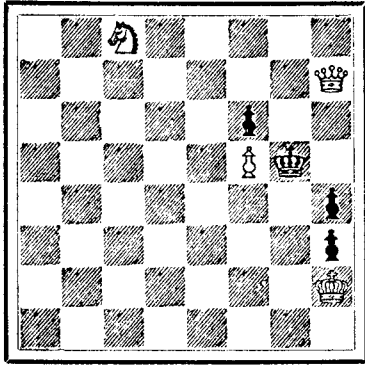


CHESS.

PROBLEM No. 415.

By G. J. SLATER.

BLACK.



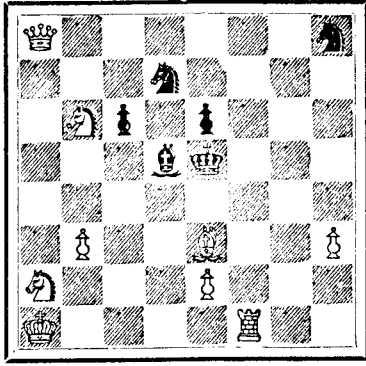
WHITE.

White to play and mate in three moves.

PROBLEM No. 416.

By J. W. ABBOTT.

BLACK.



WHITE.

White to play and mate in three moves.

SOLUTIONS TO PROBLEMS.

No. 409.

- White. 1. Kt-B 3, 2. Q-R 7, 3. Q-Q 4 mate. Black. K-Kt 5, K-B 6

No. 410.

- White. 1. B-R 4, 2. R-R 5 +, 3. B-Q 8 mate. Black. K x P, K-Kt 3. If 1. P x P, K x Kt. With other variations.

GAME PLAYED AT THE TORONTO CHESS CLUB ON THE 27TH NOVEMBER, 1889, BETWEEN MR. FRIEDWELD AND MR. DAVISON.

KING'S GAMBIT DECLINED.

Table showing chess moves for Mr. Friedweld (White) and Mr. Davison (Black) in a King's Gambit Declined game.

NOTES.

- (a) Is this move good? (b) Well played, winning a piece. (c) Well played.

PREMIUM MUSIC FOR THE MILLION.

SPECIAL MUSICAL PREMIUMS TO SUBSCRIBERS OF "FOREST AND FARM," TO HELP WHILE AWAY THE COMING LONG WINTER EVENINGS.

Compare our prices with prices asked for the same goods, and you will see you get the Musical Instruments for less than half the ordinary retail price, and "FOREST AND FARM" Free for One Year.

PREMIUM CHINA DINNER AND GLASS SETS.

GRAND PREMIUM No. 339—Our Latest and Greatest Premium—consists of the following pieces (in dishes, each piece counts one—for instance—Teapot and Cover count two pieces):

- 1 Covered Vegetable Dish (two pieces), 1 Scaloped Vegetable Dish, 12 Breakfast Plates, 1 Bowl, 12 Individual Butters, 1 Teapot and Cover (two pieces), 2 Butter Plates, 5 in., 1 Pickle Plate, 12 Teacups, 2 Bread Plates, 8 in., 1 Sugar Bowl and Cover (two pieces), 1 Meat Plate, 12 in., 12 Fruit Plates, 12 Saucers, 1 Cream Pitcher, 12 8-inch deep Plates, 12 8-inch flat Plates, 12 16-inch flat Dish, 12 4 x 4 Saucers, 12 6-inch flat Plates, 12 1 Teapot, 2 Sauce Tureen Cpt, 4 12 Cups and Saucers, 24 1 Sugar, 2 1 Cream, 12 Patties, 12 1 Slop, 1 12 inch flat Dish, 12 2 End Dishes, 4 100

CHARLES STARK & CO., 52 Church Street, Toronto.

N.B.—Send for our 320-page Catalogue. Contains nearly 3,000 Illustrations of every description of merchandise, Jewellery, Firearms, Dry-Goods, Clothing, Groceries, Hardware, etc., etc. Price, 25 cts. Free to intending purchasers.

DO YOU WANT FINE STATIONERY?

HART & COMPANY, TORONTO,

Advertisement for Hart & Company stationery, featuring a logo and text about fine stationery, including dance programmes, home cards, and invitation cards.

Coughs, Colds, Croup.

Allen's Lung Balsam was introduced to the public after its merits for the positive cure of such diseases had been fully tested.

Allen's Lung Balsam

action, and imparts strength to the whole system. Such is the immediate and satisfactory effect that it is warranted to break up the most distressing cough in a few hours' time, if not of too long standing.

CURE FOR ALL! HOLLOWAY'S OINTMENT

Is an infallible remedy for Bad Legs, Bad Breasts, Old Wounds, Sores and Ulcers. It is famous for Gout and Rheumatism. For Disorders of the Chest it has no equal.

RADWAY'S ALWAYS RELIABLE PILLS PURELY VEGETABLE.

For the Cure of all DISORDERS OF THE STOMACH, LIVER, BOWELS, KIDNEYS, BLADDER, NERVOUS DISEASES, HEADACHE, CONSTIPATION, COSTIVENESS, COMPLAINTS PECULIAR TO FEMALES, PAINS IN THE BACK, DRAGGING FEELING, etc., INDIGESTION, BILIOUSNESS, FEVER, INFLAMMATION OF THE BOWELS, PILES, and all derangements of the internal viscera.

Colds, Coughs, Bronchitis,

And other affections of the Throat or Lungs, are speedily cured by the use of Ayer's Cherry Pectoral. This medicine is an anodyne expectorant, potent in its action.

LUNG COMPLAINTS.

I have no hesitation in saying that I regard Ayer's Cherry Pectoral as the best remedy within my knowledge for the cure of Colds, Chronic Bronchitis, Coughs, and all diseases of the Throat and Lungs.

Ayer's Cherry Pectoral,

Prepared by Dr. J. C. Ayer & Co., Lowell, Mass. Sold by Druggists. Price \$1; six bottles, \$5.