

INSOLVENT NOTICE

In the matter of La Cie Electrique St. Jean Baptiste, of the City of Montreal, Canada, P. Q., in Liquidation.

THE undersigned will sell by Public Auction, in three lots, at the office of Chas. Desmarreau, Liquidator, No. 1598 Notre Dame St., Montreal, Canada, P. Q., on

THURSDAY, THE 10TH OF DECEMBER, 1895,
AT 11 O'CLOCK IN THE FORENOON,

all the immovable properties and moveable assets of the said company, consisting of

(1) All those tracts and parcels of land situated in St. Jean Baptiste Ward, in the City of Montreal, Province of Quebec, Dominion of Canada, described as follows:

A. The northeasterly parts of lots numbers 32, (thirty-two), 33 (thirty-three) and 34 (thirty-four), according to the official subdivision of lot number 10 (t n) of the official cadastre, of the village of St. Jean Baptiste, comprising an area of 4970 (four thousand nine hundred and seventy) feet, more or less, and bounded towards the north-east by Montana street, towards the south-east by Rachel street, towards the north-west by lot number thirty-five of said official sub-division of said lot number ten, and towards the south-west by the remaining parts of said lots numbers thirty-two, thirty-three and thirty-four, of said official sub-division of said lot number ten, with buildings and dependencies thereon erected.

B. Lots numbers 35 (thirty-five), 36 (thirty-six), 37 (thirty-seven), 38 (thirty-eight), 39 (thirty-nine), 40 (forty), 41 (forty-one), and 42 (forty-two), of said official sub-division of said lot number 10 (ten), comprising an area of 17266 (seventeen thousand two hundred and ninety-six) feet, more or less, bounded towards the north-east by Montana street, towards the south-west by lot number sixty-one (a) of said sub-division of lot number ten, towards the north-west by lot number forty-three, and towards the south-east by lot number thirty-four of said sub-division of said lot number ten together with the right of passage in common with adjoining proprietors in the lane at rear of said lots.

C. All engines, boilers, dynamos, tank (45,000 gallons), machinery, belting, shafts and general plant used for manufacturing and generating electricity, as well as the wires and posts, transmitters, meters, lamps, etc., used for distributing and furnishing electric light to the citizens of Montreal and suburbs, the material and stock used for repairing the lines of the company, the whole amounting as per inventory to one hundred and forty-four thousand, three hundred and seventy-one dollars (\$144,371.00.)

D. The franchise rights and privileges acquired by the said company to plant poles in the streets of the city of Montreal

(2) The office furniture and fixtures, etc., amounting to \$106.00.

(3) The book debts, amounting as per list to \$3456.00.

The purchaser of the immovable and dependencies described in paragraph (1) shall have to make a cash deposit of five thousand dollars currency (\$5,000) at the time of adjudication.

The purchaser of moveable assets described in paragraphs (2) and (3) shall have to make a cash deposit of ten per cent at the time of adjudication.

For further information apply to

CHAS. DESMARTEAU, Liquidator,

1598 Notre Dame St.,

MARCOU FERRER, Auctioneer,

Montreal,

Canada, P. Q.

Our "Acme" Automatic . . . GURTAINS

Railway Coach and Street Car

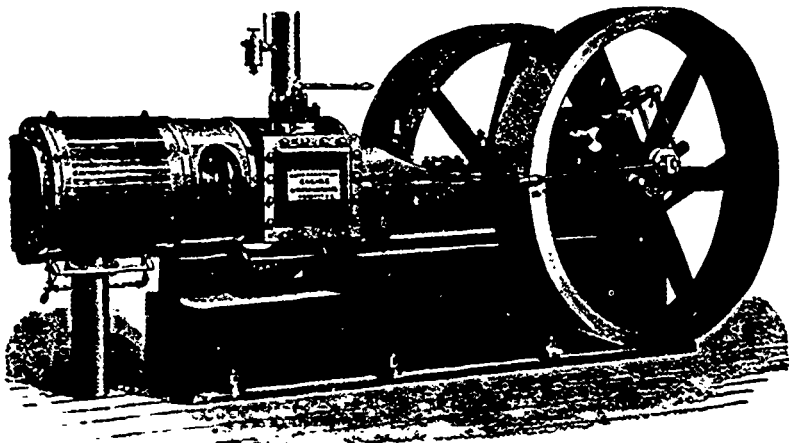
For either open or closed cars—made to fit any Window,

ARE THE BEST IN THE WORLD.

We also manufacture a New Special Material for Excursion or Open Street Cars, which is perfectly waterproof, will not fade, natter in appearance, any width without a seam, stronger and cheaper than any shade now upon the market. Can be seen on new cars lately erected by the Toronto Railway Co. We also carry in stock every description of Railway Coach and Street Railway Shade Cloth, Goods, Fixtures, etc.

WRITE FOR PARTICULARS AND SAMPLES.

Menzie, Turner & Co. SHADE Toronto
MANUFACTURERS



ROBB-ARMSTRONG ENGINES

Simple, Tandem and Cross Compound

Correct Design

High Grade Work

ROBB ENGINEERING CO., Ltd.

Amherst, N. S.

WM. MCKAY, Seaforth, Ont., Travelling Agent.

ROBERT GRAHAM

Iron Founder and Machinist

Water Wheels, Engines and Mill Machinery a Specialty.

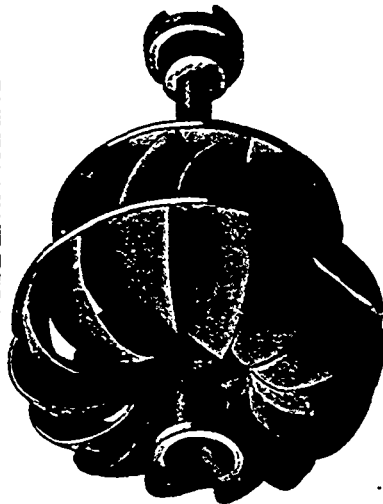
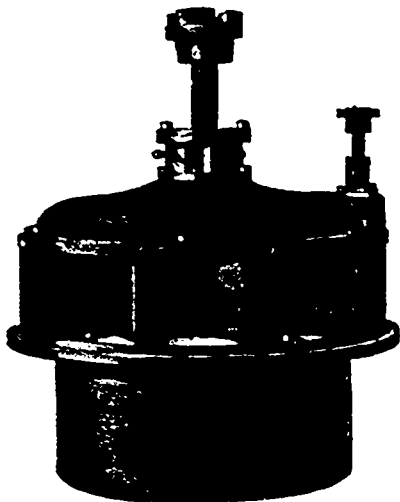
... OTTAWA, ONT.

THE

**STANDARD . . .
WATER WHEEL**

MADE in sizes from 6 inches to 84 inches diameter. Wheel one solid casting. 84 per cent. of power guaranteed. In five pieces. Includes whole of case, either register or cylinder gate. Water put on full gate or shut completely off with half turn of hand wheel, and as easily governed as any engine

Cut showing Wheel Removed from Case.



Write for Estimates, References and Catalogues of the STANDARD WATER WHEEL, also Milled and Rough Gearing of every size and description; Engines, Mill Machinery and Electric Power Plants; Latest Improved Band Saw Brazing Tables; Shears and Gummers; also Surface Grinder for Shingle Saws.

Please mention the CANADIAN ELECTRICAL NEWS when corresponding with Advertisers