

From JOHN MILLER, Markham, Ont.

*Seedling Apple*.—Mr. Miller says the tree is 40 years old and was growing on the farm when he came into possession of it 28 years ago. It is healthy and a regular bearer. Description: Medium size; form roundish oblate. Skin smooth, yellow, red on one side, and splashed all over with bright red. Stem very short moderately thick. Cavity deep, narrow, smooth, lightly russetted. Calyx closed, segments broad and short. Basin shallow and uneven. Flesh greenish white, fine grained, juicy, mild sub-acid, pleasant in flavor and good in quality. Core of medium size, seed very plump. Season, December to January. An attractive apple, no better in quality perhaps than others of the same season now in cultivation, but yet one which may prove valuable in some sections on account of the reported hardness and productiveness of the tree.

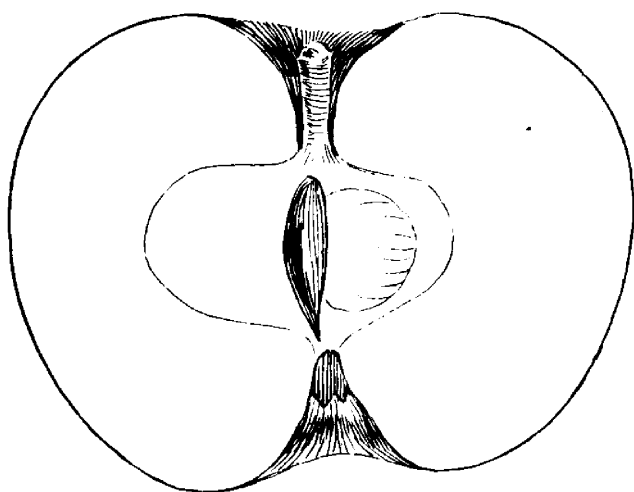


FIG. 929.—SECTION OF EMPRESS APPLE.

From HAROLD JONES, Maitland, Ont.

*Crimson Beauty*.—This apple was exhibited by Mr. Jones at the meeting of the Ontario Fruit Growers' Association at Woodstock last December, who reported it as having been cultivated in the vicinity of Brockville for a number of years past where it is highly prized. Description: Medium size, oblate, regular. Skin smooth, shiny, covered with bright red to dark crimson, interspersed with large dots. Cavity, broad, open, slightly russetted. Stem three-quarters of an inch long, moderately stout; basin slightly irregular. Eye open. Flesh, white, firm, juicy, mildly sub-acid. Fameuse-like flavor, with a slight suggestion of astringency. Season, December to January. A handsome apple of good quality.