



## "What SHALL I Do?"

**"H**OW shall I get past this crisis? What will come next?"

These are the questions which are to-day causing keen mental anxiety to many business men and making them old before their time.

After the four years of exceptional strain during the war many a man finds himself now burdened down as never before with problems—financial and otherwise—which are more than he can solve.

Is it any wonder that the nervous system gives out? Is it any wonder that there comes moments of discouragement and despondency?

There is nothing which breaks down nerve cells so rapidly as mental anxiety or worry if you choose to call it that.

And it is under just such circumstances that Dr. Chase's Nerve Food proves of very great benefit, for it supplies to the human system the very ingredients from which Nature rebuilds the wasted nerve cells and restores the mental vigor.

The headaches, the brain fog, the sleeplessness and indigestion, which are the usual accompaniments of exhausted nerves, soon disappear when the rebuilding process is established by the use of Dr. Chase's Nerve Food.

For the man in the office as well as for the woman in the home Dr. Chase's Nerve Food has proven the best means obtainable of restoring tired, starved nerves to health and vigor.

Try it when you are tired and brain weary and feel inclined to look on the dark side of things, for these are the indications that your nervous system is in need of nutrition which it is not obtaining from the food you eat.

Dr. Chase's Medicines are sold by all Druggists and Dealers in Newfoundland.

Wholesale from GERALD S. DOYLE, St. John's, Distributing Agent.

## Mount Cashel Extension Fund.

Amount acknowledged, \$14,328.00.  
 \$100.00—J. J. Mulcahey.  
 \$50.00 each—M. Morey & Co., Dr. M. Power.  
 \$25.00—Mr. J. Whiteford McNelly.  
 \$20.00 each—Jackman and Green, Very Rev. F. Ryan, P.P.  
 \$10.00 each—Chas. Cantwell, S. Frelich, Thos. B. Devine, Friend, W. F. Kenny, John J. Flynn, A. Brazil, S. Levitz, Thos. Freeman, S. G. Faour, Jack Robinson, Captain Byrne, M.C., Lt.-Col. W. Rendell, Lt. F. A. Edens, Capt. L. C. Murphy, Lt. S. Smith, Dr. J. B. O'Reilly, Lt. G. Sceviour, B. Sinnott, Capt. J. Lewis, Holyrood, J. B. Channing, M. J. Savage, D. J. French, Jas. Boland, J. J. Evans, W. Murphy, Leo O'Mara, Thos. Fitzpatrick, J. F. Boggan, Jas. Keough, Patrick Warren, S. Ryan, Edström & O'Grady, W. C. O'Grady.  
 \$5.00 each—Jas. Earles, W. Richards, J. Kielly, Friend, T. T. J. Luby, J. A. Sage, Frank Boggan, Friend, E. F. M. F. Caul, Friend, J. N. Mrs. J. Robinson.  
 \$1.50—E. J. P.  
 \$1.00 each—M. Aylward, Chas. Power, M. Manning, Chas. Power, S.F.A., D. DesRoches, S. B. Connors, L. Buckley, J. Murphy, J. Brown, V. Brittle, F. Kennedy, W. J. Murphy, T. Nurse, W. Dalton, L. F. Goodland, Thos. F. Ryan, Friend, P.J.D., Wm. Power, M. Gallivan, Master V. Quigley, E. Long, Alex. Boland, Leo Robinson.  
 50c. each—Master J. Robinson, Master N. Robinson, Master F. Robinson, Shela Robinson, J. Perks, W. Walsh, A. Sullivan, G. Kelly, J. L. Dunn, J. Nurse, J. Cronan. Total—\$14,328.00.

## Last Bachelor Dinner.

A most representative gathering of overseas veterans assembled at the West End Restaurant on Monday night last, and paid tribute to the popularity and high esteem in which Capt. Gerald Byrne, M.C. is held by the regiment. Capt. Byrne leaves for Canada next week, where he joins the Army of Benedict, and it was to commemorate this event that the banquet was held. Capt. Bert Dicks made an ideal chairman, and he and Capt. John Fox were responsible for the success of the affair. Mr. Fred Chesman contributed much to the enjoyment of the evening by presiding at the piano, and the musical programme arranged by him included songs from Lieut.-Col. Bernard, Capt. Fox, Capt. J. H. Snow and Capt. Byrne. The following is the toast list:

"The King"—Prop. the Chairman.  
 "Capt. Byrne, M.C."—Prop. Lieut.-Col. A. E. Bernard, M.C.; Resp. Capt. Gerald Byrne, M.C.

"Sergeant-Major MacKay, M.S.M."—Prop. Capt. Stan Robertson; Resp. R.S.M. MacKay.

"The Ladies, and their great work in the War"—Prop. Lieut.-Col. W. F. Rendell, C.S.O.; Resp. Capt. Leo Murphy.

"Our Absent Friends"—Prop. Lt. Francis Edens. (Drunk in silence).  
 "The Chairman"—Prop. Capt. J. E. J. Fox; Resp. Capt. C. B. Dicks.

Most interesting speeches were also made by Capt. Thos. Nangle, C.F., and Mr. Chesman, both of whom brought home different aspects of the war, and contributed much to the success of the affair. Perhaps the most popular toast was that of the medical service, which Major L. Paterson responded. The function terminated with the singing of the National Anthem.

## Meigle's Passengers.

The Meigle took the following passengers outward from Placentia yesterday morning: G. Penney, W. Pittman, R. W. Ritchey, Pte. Butler and wife, Miss J. Delaney, E. Thornhill, Mrs. Washworth, Pte. Ryan, Pte. Way, Mrs. W. Smith, Mrs. Barrett and 2 children, Miss L. Butler, Mrs. R. Hickman and 2 children, Miss Inkpen, Mrs. M. Foote, Miss A. Keeping, R. E. Ennis, M. H. Penney, W. Ashford, S. Collier, A. Wheatly, P. Barrett, G. Bartlett, J. Harnett, D. Lake, P. J. Glavin, H. Forsey, E. B. Snow, Pte. G. McDonald, S. Vallis, A. Spencer, Mrs. F. Kelly, Mrs. Martin, Miss M. Keating, Miss A. Turpin, Mrs. Furlong, Mrs. Mahoney, Mrs. Bonnell, Miss Hickman.

## Daily Express Service.

After July 1st it is understood that there will be a daily steamship service between North Sydney and Port aux Basques, Sundays excepted. The service will be conducted by the steamers Kyle and Glencoe, which will leave North Sydney after arrival there of the Canadian National Railways No. 5, and will connect at Port aux Basques with express trains for St. John's. The service at present is tri-weekly.

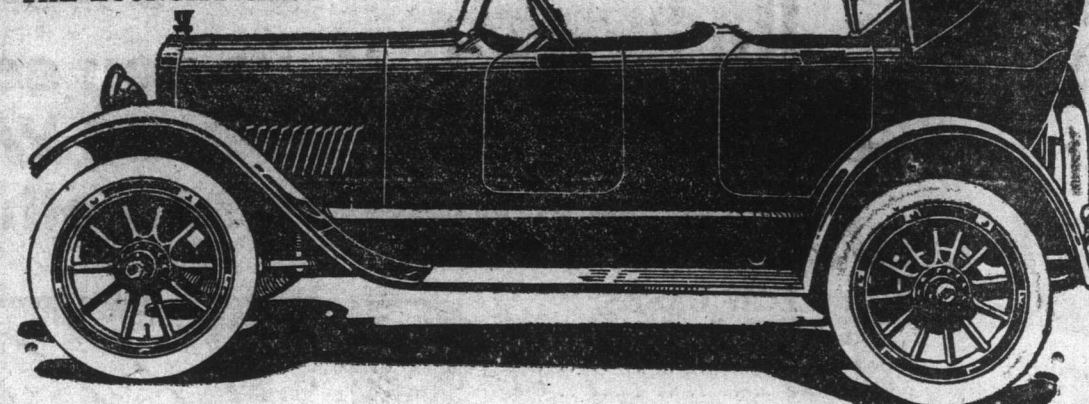
## Engagement.

Dr. and Mrs. Nutting Fraser announce the engagement of their daughter Helen to Capt. J. E. J. Fox of the Newfoundland Regiment.

MILNARD'S LINIMENT CURES DIS-TEMPER.

## ELCAR

The largest, sturdiest and most beautiful car in its price-class THE ECONOMY CAR



## Looks Good, Doesn't It?

And the Picture Doesn't Begin to Do It Justice—But Most of All, ECONOMICAL

It is graceful in design and beautiful in finish—smart and stylish in every detail. Nothing lacking for beauty, comfort, performance or endurance. Drive all day and you won't be cramped or tired. In fuel economy this car is almost without an equal—18 to 22 miles to the gallon of gasoline are the rule rather than the exception. The steering is the easiest; the control the simplest. Easy riding whether fully or partially loaded; remarkable in this respect. Abundant power for hard pulls—fine driving qualities at all speeds—and all the speed you want.

Reliable quality is a certainty in the ELCAR. Its builders learned to put in quality years ago when building cars selling up to and above \$3000. It is a quality car at a popular price—good and large enough to fulfill any motor car requirement. Don't think of choosing until you have seen the ELCAR.

## Brief Mention of ELCAR Points.

Four-cylinder models, 37½ horsepower at 2,100 r. p. m. Six-cylinder models, Red Seal Continental, 40 horsepower at 2,100 r. p. m. Two unit electric system. Long wheel-base, 116 inches; road clearance, 10½ inches. Full floating rear axle with spiral bevel driving gears. Timken Roller Bearings front and rear. Double universal drive; tubular propeller shaft. A wonderful easy riding semi-elliptic spring suspension. Roomy and comfortable bodies of beautiful design and durable finish; new "Cathedral Pipe" upholstery. Equipment complete, even to motometer.

Manufactured by ELKHART CARRIAGE & MOTOR CAR CO., Elkhart, Indiana.

## SEE THIS THE 1919 ELCAR

ELCAR FOURS, \$2,000.00; ELCAR SIXES, \$2,350.00, delivered St. John's.

Distributed exclusively in this territory by

**General Motor Supply Co., Ltd.,**  
 St. John's.

## Wrecked Crew At Halifax.

### Picked up by French Cruiser--Schr. J.B. Kitchen Abandoned.

Highly praising the treatment they received on board the rescuing craft, Captain D. MacDonald and the crew of the ill-fated tug schooner J. B. Kitchen, reached Halifax last evening. They were brought by the French cruiser Somme, which picked them up off a St. Pierre banker, the Princess. The crew had been taken on board the latter craft just three hours before the French cruiser reached the scene. On both schooner and cruiser the shipwrecked men state they received the best of treatment, and wish to thank the skipper and crew of the Princess, and the officers and crew of the Somme, for their kindness.

After loading her cargo of lumber at Old Pier Two, the J. B. Kitchen sailed for Queenstown on the morning of June 5th, being towed out by the tug Lord Wolseley. The first day out was calm and that night a fog set in accompanied by a southeast wind which gradually changed to southwest. Good progress was made until the afternoon of the 8th, when the vessel ran into a gale from the southwest. Then she had trouble with her rudder, it splitting, and finally the bolts in the rudder head loosened and all went adrift.

The following morning the schooner opened out and water began to pour into her. That day both her foremast and mainmast as well as the rigging, were lost, and the following day found her filled with water, with her deck awash. Immediately the vessel was found to be leaking, the crew went to work at the pumps, but it was of no use but being lumber laden, the craft kept afloat. Finding that their ship was doomed, the crew filled the lifeboat and dory with their clothing, papers and food so that they were able to jump into them the moment their craft gave any sign of sinking. The vessel had then reached the western edge of the Grand Banks.

Rescued the Crew.

At four o'clock on the morning of the 10th, the crew decided to leave off the deckload of lumber, which was quickly done. At seven o'clock that night they sighted two bankers anchored and by eleven o'clock they were near enough to send the dory to one of them. The skipper of the

banker, which proved to be the Princess, from St. Pierre, came back to the J. B. Kitchen, looked over the wreck and told the crew he would take them on board his vessel. Before leaving their craft, the crew set both the fore and aft houses on fire, so that she would not be a menace to navigation. Reaching the Princess, they were well cared for, and three hours later the French cruiser, Somme, appeared on the scene, being attracted by the abandoned schooner burning. The cruiser bore down on the wreck, to ascertain if there were any men on board, and in doing so got some of the wreckage around one of her propellers, disabling it. She took the crew off the banker and put two shells into the J. B. Kitchen. The cruiser headed for Halifax Wednesday night and arrived here about five o'clock yesterday afternoon.

The crew saved all their clothes and in addition their lifeboat and dory. The former is equipped with a gasoline engine and is quite a good craft. The names of the crew, all of whom belong to the west coast of Newfoundland are as follows:

Captain D. MacDonald, Mate John Kehoe, Cook B. Bayne, Seamen Joseph Butler, Albert Miles, August Eisman and Albert Hann.

John Kehoe, the mate, has been shipwrecked for the fourth time. His home is in St. John's, and one of his daughters was lost when the Florizel went ashore south of St. John's, last year. She was coming to Halifax to attend school. It is likely that the crew will leave for their homes by to-night's train.

Morning Chronicle, June 13.  
 The J. B. Kitchen was a tern schooner of 302 tons net, registered in the port of St. John's and owned by Mr. John T. Moulton of Burgeo.

When you want Sausages, why get ELLIS'; they're the best.

## Job Hunting V.C.

"Have hunted high and low for a job, but am turned down. It's hard luck, but I must stick to it." Thus remarked William Dolby Fuller, V.C., to the London News of the World correspondent at London. Fuller, who is the famous Grenadier Guardsman who captured 50 Germans single-handed at Neuve Chapelle in 1915, added, "I will do any mortal thing."

When you want something in a hurry for tea, go to ELLIS'—Head Cheese, Ox Tongue, Boiled Ham, Cooked Corned Beef, Bologna Sausage.

MILNARD'S LINIMENT CURES GARTER IN COWS.

## P. E. I. Potatoes, 1-2 brl. SaX.

Good Table Potatoes or for Seed Purposes. Sound and Dry.

**NEW GOODS.**  
 Southwell's Lemon Crystals, 2 oz. tins.  
 Army Rations.  
 Sliced Pineapple, 2's & 3's.  
 Libby's Prepared Mustard—Jars.  
 Fine Dessicated Coconut.  
 Finest Wrinkled Bolling Green Peas.  
 Alaska Pink Salmon, 1lb. tins  
 Libby's Special Family Beef.

Cream of Wheat.  
 Cream of Barley.  
 Malted Nuts.  
 Brown's Biscuits, 1 lb. tins.  
 Fine White Granulated Sugar, 2 lb. and 5 lb. cartons.  
 Table Apples.  
 Parsnips.  
 Kero Table Syrup.  
 Mol's Confectionery.  
 Ex S. S. Adolph.  
 XXX Blue Boxes Nut Milk, ½'s, 1's, etc.

## C. P. EAGAN,

Duckworth Street and Queen's Road.

## WHITE SALE

An Important Selling of White Summer Needs That Will Be Welcome to Our Patrons. Here Are a Few of the Leading Items in This Sale.



**WHITE VESTS**  
 with Wing Sleeve and Sleeveless.

Misses' Sleeveless . . . . .20c.  
 Ladies' Sleeveless . . . . .25 & 30c.  
 Ladies' Wing Sleeve . . . . .25, 30, 35c.

**WHITE HOSE**  
 for Ladies, Misses & Children.

Ladies' Silk Hose . . . . .55 & 95c.  
 Ladies' Mercerized . . . . .40 & 50c.  
 Ladies' Cotton . . . . .25, 30 & 35c.  
 Misses & Children's Hose, 15, 25, 30, 35 and 40c.



**WHITE GLOVES,**  
 60, 70 and 85c.

**WHITE GLOVES,**  
 60, 70 and 85c.

These Gloves are made in new fabrics which will wash out equal to new, and have the same perfect fit and dressiness after they are cleaned as they had before.

## MILLEY'S.

Advertise in the Telegram

## MEN

### Lighter Up

### At Lightes

MEN'S BALBRIGGAN SHIRTS, all sizes . . . . .

MEN'S SUPERIOR BALBRIGGAN SHIRTS and DRAWERS. . . . . at . . . . .

MEN'S NEW-KNIT NATURAL SHIRTS and DRAWERS . . . . . and \$4.00 each.

MEN'S STANFIELD NATURAL COMBINATIONS, at \$5.00

### In Boys' Lighter

WE SHOW

BOYS' NATURAL BALBRIGGAN at 55c. each.

BOYS' STANFIELD NATURAL SHIRTS and DRAWERS . . . . .

CHILDREN'S STANFIELD CASHMERE COMBINATIONS SUITS.

## HENRY

## NOTICE

We have secured the services of ELLIS to take charge of our OXY-ACETYLENE WELDING. All descriptions of work.

## R. G. SILVER

210 New Gower Street  
 P. O. Box 532.  
 ap6, eod, tf

## WE

have a complete stock of eyeglasses and a service that includes the able element of satisfaction.

## OPTICAL

Try us and be convinced.

## R. H. TRAPNELL

THE EYESIGHT SPECIALIST

## SLATTERY

### Wholesale Dry

are now showing:

Boys' Tweed Suits.  
 Men's Wool Socks.  
 Blouse Flannelette.  
 Dress Goods.  
 Misses' Dresses.  
 Remnants of Dress Goods  
 White Flannelette.

A large assortment of S. & L. W.

SLATTERY BLDG., Duckworth &