

# PLASTERING AND CEMENT WORK

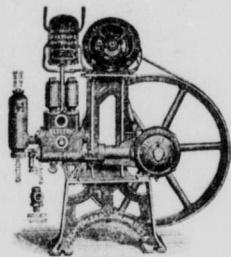
Get our prices on the above work  
Repairing neatly and promptly done

**A. J. THOMAS**

Cement and Plaster Contractor

Phone 193

Waterdown



We show this week a cut of the latest in Electric House Pumps, with automatic cut-out. This pump regulates the supply of water at regular pressure to Tank, and brings it from a well or cistern if not over 25 feet deep and any reasonable distance. This pump has no gears, is almost noiseless in operation, self oiling, self regulating, high-grade motor.

We endeavor to keep the latest and very best ideas in Hydro-Pneumatic Force and Lift Pumps. We also supply Electric and Gasoline driven Washers and Wringers and a complete line of Farm Equipment.

**C. RICHARDS**

The Farm Supply House

32 MARKET ST.

HAMILTON

## MAPLE PARK SURVEY

CORNER MAIN AND SCHOOL STREETS  
WATERDOWN

Lots 50 by 150 to 265 Feet

OWN YOUR OWN BUNGALOW

Lots overlook Hamilton, the Bay  
and Cement Highway.

Lots to suit the purchaser. Easy  
Terms.

**C. P. McGregor, Owner**

Phone 168

Waterdown

## PAINTING AND PAPER HANGING

Estimates Given Free

Phone 198

**Peter Mitchell**

WATERDOWN,

ONTARIO

### Indians in France.

The American Indians in France quickly adjusted themselves to the conditions of the country. They soon became just as cunning as in their native western haunts. This is illustrated by an incident which occurred when the Germans were withdrawing across the Marne. Indian scouts were sent over the river to ascertain the German movements and other details.

At one crossing three Indians improvised a raft and chained it to the north side of the Marne. They hid the raft and then started on an exploring expedition. The Germans discovered the strange footprints on the river bank, and came upon the raft. They awaited the Indians' return. But, after reconnoitring, the Indians approached their hidden raft cautiously and scenting trouble made a hasty retreat.

The Germans recognized that the strange red men were not of their kind, and must therefore be an enemy and began firing. The Indians ran through the woods like deer, and finally struck for the water, in an endeavor to reach the south side.

These Indians, reared along the rivers, swim like Hawaiians, and are able to remain below the surface for a long time. The Germans saw splashes in the water and began firing. The Indians dived and swam downstream under water, only coming to the surface for a brief breathing spell.

Finally the Indians reached the south bank far below the Germans, the current assisting them materially. The Germans, thoroughly angered, shot the raft to pieces.

### Decorated Graves.

June 20 was fixed by the Imperial Government as Tribute Day, when the British school children placed flowers on the graves of Canadian soldiers interred at Shorncliffe Camp.

## Gordon & Son

LADIES and GENTS

## CUSTOM TAILORS

Cleaning, Pressing and  
Repairing a Specialty

PHONE 153  
WATERDOWN

## R. J. VANCE

DENTIST

Mill Street Waterdown

John Kitching Mervyn Kitching

## Kitching & Son

FUNERAL  
DIRECTORS

Up to Date Equipment  
Motor or Horse Hearse  
We Pay All Telephone Charges  
Waterdown Ontario

Westover Branch at  
Markle's Store

# EAGER'S WATERDOWN

Men's white canvas lace boots, leather sole

**\$3.25 a pair**

Men's white canvas oxfords, leather sole

**\$3 a pair**

Men's brown canvas boots, leather sole

**\$3.25 a pair**

Boys brown canvas boots, leather sole

**\$3.25 a pair**

Boys canvas boots, white, brown and black sizes 1 to 5

**\$1.75 to \$2**

Men's bathing suits, one piece, skirt

**\$1.50 each**

Boy's balbuggan Combinations, short sleeve, knee length

**\$1**

Men's silk plaited hose assorted colors

**\$1**

Men's poris knit combinations, sleeveless knee length

**\$2**

Children's coverall suits, blue or khaki all one piece, just the thing for summer wear, cool and comfortable

**\$1.35 to 4.50**

Coverall aprons (women) assorted color

**\$1 to 1.50**

Boy's blouses, plain blue chambray sizes 6 to 14

**1.50 each**

This Store will Close Every  
Wednesday at 12 o'clock noon