

ON

Exhibits
in Home
Farm and
Factory

Quebec.

ant
swine and

ry. New
etc., to
Ottawa

Plows
of plows and
Center Steel
in any soil.
pulver. Cle-
low is fitted
k elm, long
long body
Shares of
r clay land.

Repairs
for all
Wilkinson
Plows

rm
g;

d

Downs

England
lms' for flock
show ring so
d range rams
reasonable.

PH, ONT.

ave won the
and Guelph.
rain of the

NS

championship

ONTARIO

RES.

on Torredor
guaranteed.
ARIO

arms

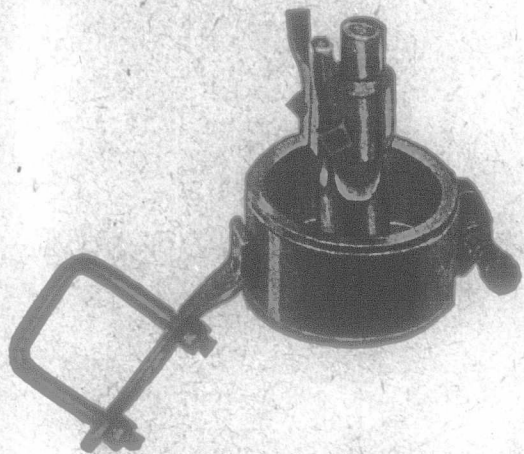
sows bred.

ONTARIO

lot of sows
ready for
All breed-
rite or call
ock, Ont.

LE

ampions for
quality and
ONTARIO



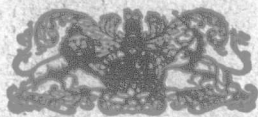
MR. FORD OWNER!

Right to-day you should investigate the

Inman Steero Tension

Makes the Ford steer like a Big Six. It holds the car to the road, makes steering a pleasure and saves its cost in tires saved through easy running. Dealers in every town.

CANADIAN TEMCO SALES
Motor Specialties of Merit
Ingersoll Ontario



Synopsis of Canadian North-West Land Regulations

THE sole head of a family, or any male over 18 years old, may homestead a quarter-section of available Dominion land in Manitoba, Saskatchewan or Alberta. Applicant must appear in person at the Dominion Lands Agency or Sub-Agency for the District. Entry by proxy may be made at any Dominion Lands Agency (but not Sub-Agency), on certain conditions.

Duties—Six months residence upon and cultivation of the land in each of three years. A homesteader may live within nine miles of his homestead on a farm of at least 80 acres, on certain conditions. A habitable house is required except where residence is performed in the vicinity.

In certain districts a homesteader in good standing may pre-empt a quarter-section alongside his homestead. Price \$3.00 per acre.

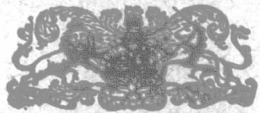
Duties—Six months residence in each of three years after earning homestead patent; also 50 acres extra cultivation. Pre-emption patent may be obtained as soon as homestead patent, on certain conditions.

A settler who has exhausted his homestead right may take a purchased homestead in certain districts. Price \$3.00 per acre. Duties—Must reside six months in each of three years, cultivate 80 acres and erect a house worth \$300.

The area of cultivation is subject to reduction in case of rough, scrubby or stony land. Live stock may be substituted for cultivation under certain conditions.

W. W. CORY, C.M.G.,
Deputy of the Minister of the Interior.

N.B.—Unauthorized publication of this advertisement will not be paid for.—64388.



MAIL CONTRACT

SEALED TENDERS, addressed to the Postmaster-General, will be received at Ottawa until noon on Friday, the 9th day of July, 1915, for the conveyance of His Majesty's Mails on a proposed contract for four years, six times per week, over London (Hyde Park Corners) Rural Route, from the Postmaster-General's Pleasure. Printed notices containing further information as to conditions of proposed Contract may be seen and blank forms of tender may be obtained at the Post Offices of London, London West and Hyde Park Corner, and at the office of the Post Office Inspector, London.

Post Office Department, Canada, Mail Service Branch, Ottawa, 28th May, 1915.

G. C. ANDERSON,
Superintendent.

HIGHEST PRICES PAID FOR

HIDES, WOOL, &c.

JOHN HALLAM, LIMITED
TORONTO

PLOWING

Am now able to make contracts for Plowing, Discing, Ditching, Grading and Barn Moving with my 45 h. p. tractor. All equipment furnished. Address

BRUCE F BRADLEY

Jeannettes Creek, Chatham 'Phone 962 r 1-3.

What Ontario Farmers Think of
Sydney Basic Slag

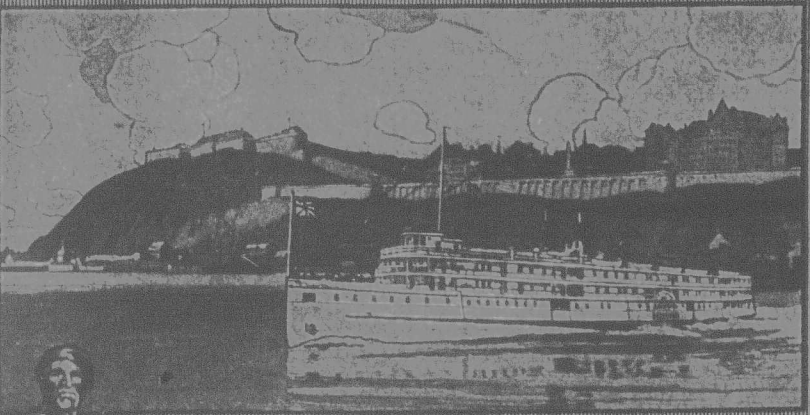
Mr. T. H. Hill, J. P., Jellyby, Leeds County, writes on the 15th October, 1914, as follows:

"Seven years before your company started operations I purchased a ton of BASIC SLAG in New Brunswick and applied it to a portion of a field on my farm. The results were simply marvellous, and even at this time the effects of the Slag are apparent. Last year (1913), as the result of your advertisement I used two tons, and had equally good success. This year I used eight tons for spring crops, three tons for fall wheat and 2,200 lbs. for meadow, and I intend to Slag 25 acres this fall for grain and seeding down. In my opinion the best time to apply BASIC SLAG to the land is in the fall, even for spring crops. I have used fertilizers of all kinds ever since they were introduced, but none has given me the same results as BASIC SLAG, and I can honestly, therefore, recommend it to my brother farmers as the best paying fertilizer I ever used. My advice to every farmer is to try it for himself."

AGENTS WANTED IN
DISTRICTS WHERE NOT
ALREADY REPRESENTED

The Cross Fertilizer Co., Limited
SYDNEY, NOVA SCOTIA

"NIAGARA TO THE SEA"



JOHNNY CHUCK

QUAINT Quebec—historically interesting and delightfully reminiscent of old France,—forms one feature of a magic chain of experiences, included, in the "Niagara to the Sea" trip.

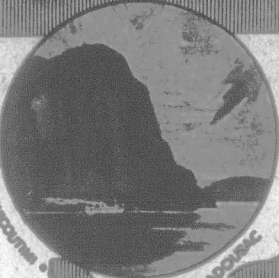
The tranquil St. Lawrence, with its Thousand Islands; the marvelous "rapids"; the brief sojourn in the land of the French-Canadian habitant; the wonderful Saguenay river trip, and stupendous Cape Trinity—

All these attractions offer a holiday unequalled in diversity of interest, and with comforts supreme on these splendid steamers.

Round Trip, Niagara Falls to Chicoutimi and return,

\$34.55

Any portion of the trip at correspondingly low rates.



THE SAGUENAY

MURRAY BAY

QUEBEC

The folder entitled "Niagara to the Sea" freely sent to all who write



TORONTO

THOUSAND ISLANDS

NIAGARA FALLS

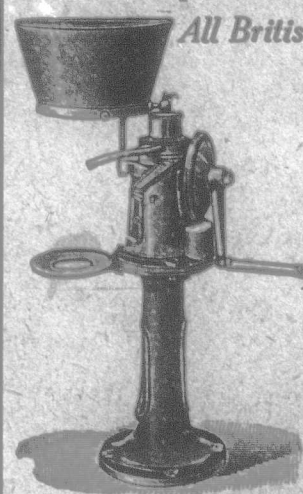
BUFFALO

CANADA STEAMSHIP LINES LIMITED

THOS. HENRY, Passenger Traffic Manager,
120 Victoria Square, Montreal.

When writing advertisers, will you kindly mention "The Farmer's Advocate."

There Is Money In It For You
If you install a
PREMIER
Cream Separator—NOW!



All British The greater the quantity of milk you are handling, the heavier your loss if you are using an inefficient separator. Trade it in on a Premier which will save its cost and make money for you.

Simple construction, high-grade material and workmanship. Service lasting and satisfactory. from our nearest Agent or The Premier Cream Separator Company TORONTO, ONTARIO

GRAND TRUNK RAILWAY SYSTEM
ATTRACTIVE TRIPS

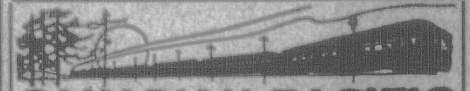
Muskoka Lakes TO Lake of Bays
Georgian Bay Algonquin Park
French River Kawartha Lakes
Maganetawan River Timagami, etc.

Round trip tourist tickets now on sale from certain stations in Ontario at very low fares, with liberal stop-overs.

MUSKOKA EXPRESS

Leaves Toronto 10.15 a.m. daily, except Sunday, for Muskoka Wharf, Huntsville, Algonquin Park and North Bay. Connections are made at Muskoka Wharf for Muskoka Lakes and at Huntsville for points on Lake of Bays. Parlor-Library-Buffer car to Algonquin Park. Parlor-Library-Cafe car and first-class coaches to North Bay. Full particulars and tickets on application to agents.

C. E. HORNING, District Passenger Agent,
Union Station, Toronto, Ontario.



CANADIAN PACIFIC
GREAT LAKES
Steamship Service

Steamers leave Port McNicoll Tuesdays, Wednesdays, Thursdays and Saturdays for SAILT STE. MARIE, PORT ARTHUR and PORT WILLIAM.

The steamer "Manitoba," sailing from Port McNicoll on Wednesdays, will call at Owen Sound, leaving that point 10.30 p.m.

STEAMSHIP EXPRESS
leaves Toronto 12.45 p.m. daily, except Friday, making direct connection with steamers at Port McNicoll on sailing days.

Particulars from J. H. Radcliffe, Agent,
C.P.R., London, Ont., or write M. G. Murphy,
D.F.A., Toronto.

A Gold Mine on Your Farm

You can double your profits by storing up good green feed in a

BISSELL SILO

"Summer Feed all Winter Long"

Scientifically built to keep silage fresh, sweet and good to the last. Built of selected timber treated with wood preservatives that prevent decay.

The BISSELL SILO has strong, rigid walls, air-tight doors, hoops of heavy steel. Sold by dealers, or address us direct. Get free folder. Write Dept. W.

T. E. BISSELL CO. Limited
Elora, Ontario

MAKE YOUR BIKE A MOTORCYCLE

At a small cost by using our Attachable outfit. FITS ANY BIKE. Easily attached. No special tools required. Write today for list and FREE BOOK describing the SHAW Bicycle Motor Attachment. Motorcycles, all makes, new and second-hand, up and up.

SHAW MANUFACTURING CO.
Dept. 79, Galesburg, Kan., U.S.A.